

Cura 19



4



2



2

Land - \$349,900

Build - \$353,900

Package Price - \$703,800*



Lot 935 Woodland
Street, Coridale Lara

VERV

Full Turnkey Inclusions

- > Full turnkey package
- > Architecturally designed home
- > 2590 ceilings throughout
- > Stone benchtops throughout
- > Floor to ceiling tiles to all wet areas
- > LED downlights throughout
- > ILVE appliances
- > Square set cornice throughout the home

Lot Size

350m²

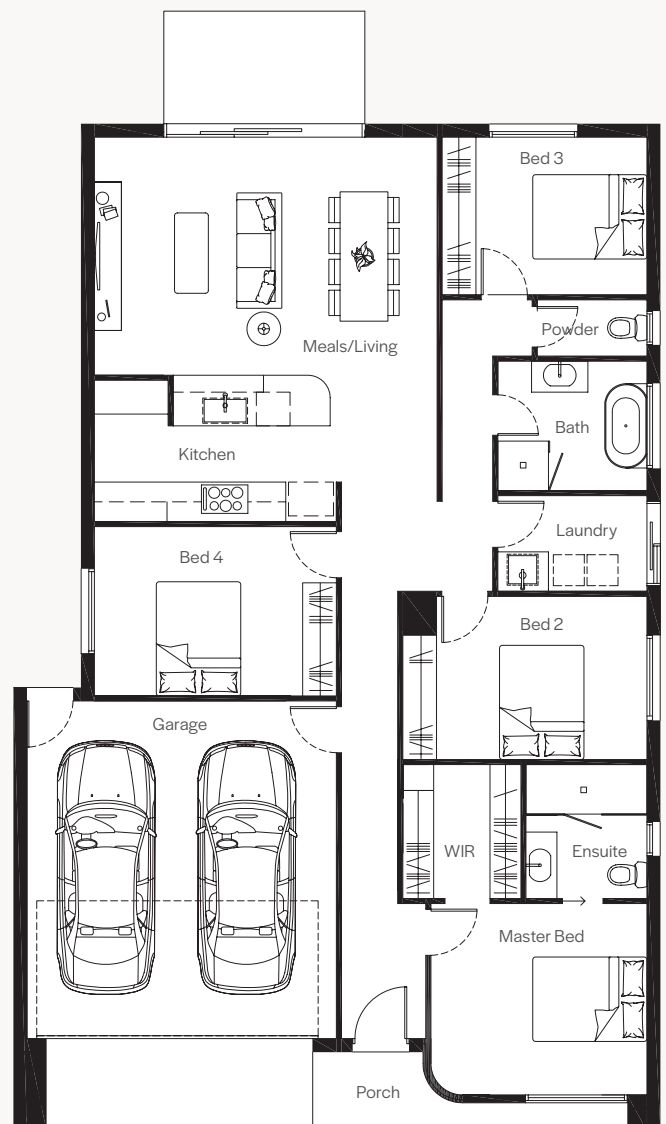
House Specifications

Ground Floor: 145.0m²

Garage: 36.0m²

Porch: 1.0m²

Total: 182.0m²



*Price based on standard inclusions and facade. Image depicts upgrade items not included in the price.

This plan is intended to give an indication of the proposed layout only and may vary without notice. It is not the actual lot for sale. Individual features such as furniture and/or vehicles are not included. Images are artists' impression for illustrative purposes only. Please ask our sales advisor or refer to contract drawings and site plans for exact dimensions and setback. Facade finishes, materials and colours may vary.