

BUILD NOW PAY LESS

Tackling the affordability crisis head on.

\$584,900

Price includes standard floorplan with standard facade.

First Home Buyers Price **\$574,900[†]**



Furniture, feature lighting, landscaping, driveway, window furnishings, and porch decking not provided by Lifestyle Range - Eight Homes.

FIXED PRICE HOUSE & LAND

a TWO

Lot 1905 Liberty Drive, Lara (Coridale)

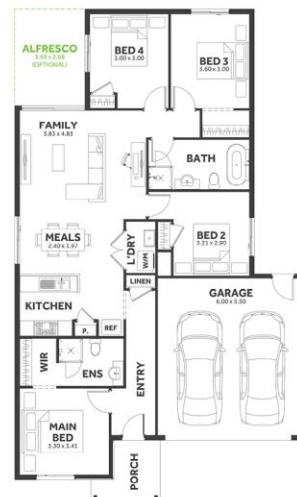
LAND SIZE: 350m²

4 2 2

176.61 m² | 19.01 sqs

includes optional alfresco

- ✓ Council and Developer Requirements
- ✓ 25 Year Structural Guarantee
- ✓ \$888 Initial Deposit for the Home Only
- ✓ Hebel Power Panel
- ✓ 900mm Appliances to Kitchen
- ✓ Tiled Shower Bases
- ✓ 3 Coat Washable Paint System
- ✓ Colorbond Roof



Please Contact

Diana Krstevska
0412362617
dianak@8homes.com.au

eightHOMES

*Price is based on the standard floorplan and facade. Eight homes reserve the right to change prices/promotions without notification. Subject to developer's design review panel final approval. Package price is based on builder's preferred siting. Images are for illustrative purposes and are to be used as a guide only. Eight Homes does not provide furniture décor, landscaping and decking. Please refer to the house and land inclusions and house specific working drawings for all details. [†]Available to first home buyers eligible for the state government First Home Owners Grant. For details visit www.sro.vic.gov.au Mahercorp Pty Ltd DBU 1994.

Prices are for standard Affordable 8 floorplans and facade, any modifications will incur an additional fee. Ask your Sales Consultant for a copy for the specification. Offer valid from 8.12.23 – 29.02.24. To be eligible, the first instalment fee of \$888 is required to secure the price. Paperwork must be Sales Accepted at Head Office within 21 days from the first instalment fee date and no structural changes are permitted. Contract must be signed in accordance with the preliminary agreement. Not available in conjunction with any other offer. Eight Homes reserves the right to change prices without notice. Images are for illustrative purposes only. Geographical restrictions apply. DBU 18864