



From

# \$645,014\*

## Commander 257

Facade: Ambrosia

House: 27.59 sq

Land: 438 sq



4



2



3



1



2

### Woodlea Estate

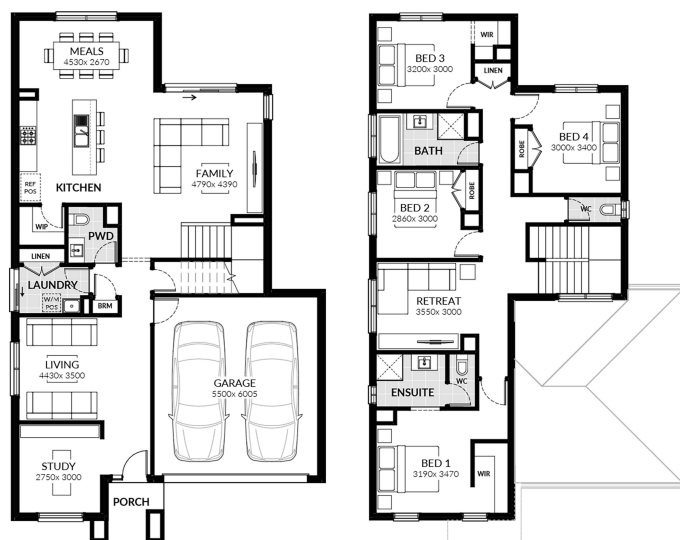


WOODLEA

Lot 5131  
Bonniebrook Road  
Rockbank

### Inclusions

- Bluescope Steel House Frame
- Colorbond Roof®
- Spacious Meals and Family Area
- Tiled Splashback to Kitchen
- Flyscreens with Aluminium Mesh
- Solar Hot Water System
- Sectional Garage Door
- 18 Month Price Hold
- Bushfire Compliance up to BAL 12.5
- 50 Year Structural Guarantee
- Over 30 Years Family Owned
- Laminate Flooring & Carpet Throughout
- NBN Fibre Package
- Caesarstone Benchtops to Kitchen & Vanities
- Brick Infill Above Garage Door
- Evaporative Cooling



### For more information contact:

**Mathew Jijo**

**Tel:** 1300 545 464

**Email:** [houseandland@jgking.com.au](mailto:houseandland@jgking.com.au)

[www.jgkinghomes.com.au](http://www.jgkinghomes.com.au)

\*JG King reserves the right to withdraw or alter the prices at any time without notice. Package price is based on standard floorplan and builders preferred siting. Packages are subject to developer approval and availability. Images are for illustration purposes only, may depict fixtures and finishes either no longer supplied or above standard design specification. Namely decorative lights, window furnishings, external cladding, facades and landscaping such as planter boxes and fencing. Site costs are based on allowances only unless stated otherwise. For full terms and conditions on 50 year structural warranty visit [www.bluescopesteel.com.au/warranties](http://www.bluescopesteel.com.au/warranties). Speak to a JG King Representative for more information. JG King Pty Ltd (T/A JG King Homes) ABN 21 006 627 210 Registered Building Practitioner licence CDBU 49366 Published 23/08/2019