



## Ashley 26

### HOUSE & LAND PACKAGE

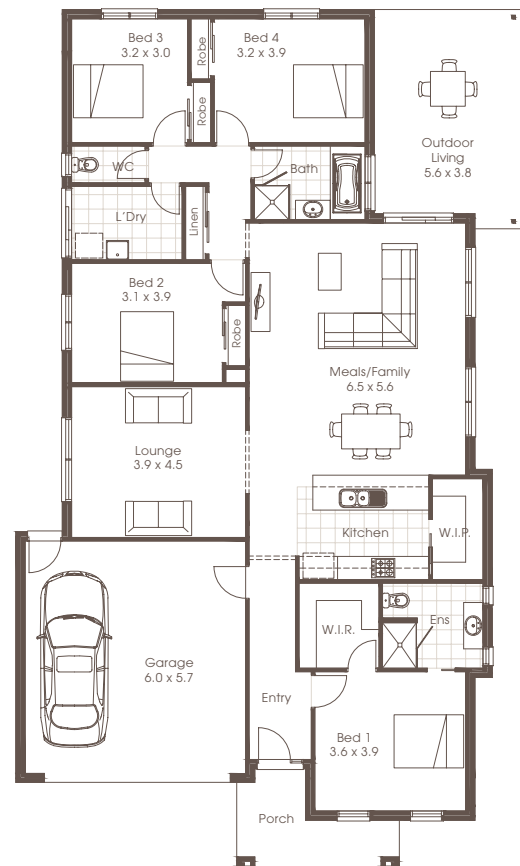
 | 4
  | 2
  | 2

**Address** **Lot No 25**  
**Drew's Paddock, Invermay Park.**  
**Lot Size: 578m2**

**Price** **\$541,660\***

• Image shown depicts Standard facade, House and Land package price is based on the Lifestyle facade.

- Driveway
- Stone Bench tops if kitchen
- Quality Flooring
- 3 Coat paint system
- Evaporative cooling
- Ducted Heating



For Further Information

**Cavalier Homes Goldfields.**

Lachlan Rodgers ph : 5334 1944

Each office is independently owned and operated. Room sizes shown are approximate only, please refer to final working drawings for actual sizes. Plans are protected by copyright. Prices, inclusions and plans are subject to variation without notice. Display/show home designs and inclusions vary throughout Australia and New Zealand and are provided as a guide only. Please refer to your building contract for the specific design and inclusion details of your new home. \*Conditions Apply. Contact us for all information regarding the inclusions. Site allowances subject to soil reports & Engineering report. This information sheet is a guide only.

Cavalier Homes Registered Builders in Albury-Wodonga CDB-U 48509 (VIC) 184744C (NSW), Bendigo CDB-U 50034, Greater Western Sydney 332118C, Goulburn Valley CDB-U 51879 (VIC) 316535C (NSW), Goldfields CDB-U 58723, Melbourne West CDB-M 49760, North Coast 209455C, Wagga Wagga 196616C.