



**dennis  
family  
homes**

a family building  
homes for families™



# HOUSE & LAND

# \$575,840\*

## DREW'S PADDOCK – INVERMAY PARK

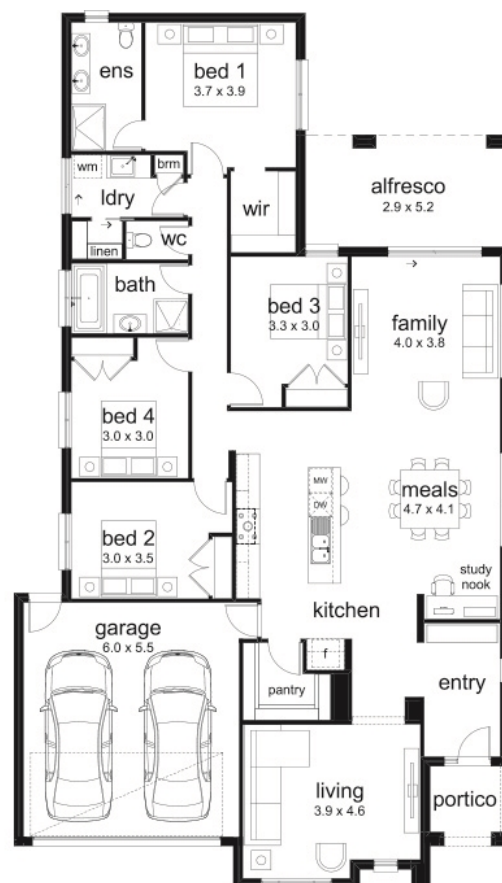
Lot 25 Wedge Circuit  
Invermay Park VIC 3350

4 bedrooms 2 bathrooms 2 car spaces 2 living areas 1 kitchen 1 alfresco

**Brookdale 263 Boardwalk Facade**  
(Inspirations Essence)

Home size: 25.95sq Land size: 576m<sup>2</sup>

- ✓ Inspirations Essence Inclusions
- ✓ BAL 12.5 inclusions
- ✓ Site Costs Allowance
- ✓ Water Tank
- ✓ NBN/Opticom/Redtrain/Multinet/CNT Corp. connection
- ✓ 2580mm ceiling height to ground floor
- ✓ 3 Coat Paint System
- ✓ Flyscreens
- ✓ Gas ducted heating
- ✓ Evaporative cooling
- ✓ Floor Coverings
- ✓ Window Furnishings
- ✓ Concrete Crossover
- ✓ 35 m2 of Concrete Drive and Paving
- ✓ Current Promotion



**Drew's  
PADDOCK**

Go to [dennisfamily.com.au](http://dennisfamily.com.au) or call  
**1800 DENNIS** for more information.

Nathan Weston 0448654097  
Reference HL0034411

\*Subject to land and build contracts for specified lot, available until sold. 1. Images not to scale and may differ from final built forms. 2. Landscaping, driveway, retaining walls, paving, decking, fencing, decorator items and furnishings not included. 3. Unless stated, site costs are not fixed, package price may increase depending on: rock removal and services connection costs, retaining walls, tree root mitigation, developer requirements, BAL zoning and other statutory requirements. 4. "Fixed site costs" packages include rock removal and services connection only, exclude retaining walls and tree root mitigation. 5. Price based on facade shown, excludes stamp duty, legal and transaction costs eg FIRB, finance fees. 6. Customers required to enter into a separate land contract with the land developer. 7. Prospective buyers should make and rely on their own enquiries and seek independent legal and financial advice. 8. Package not available in conjunction with any other promotions. © 2019. Dennis Family Homes Pty Ltd ACN 056254249 is a registered building practitioner CDB-U 49195 (Vic) and 173511C (NSW).