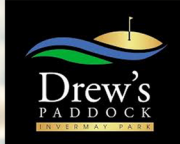


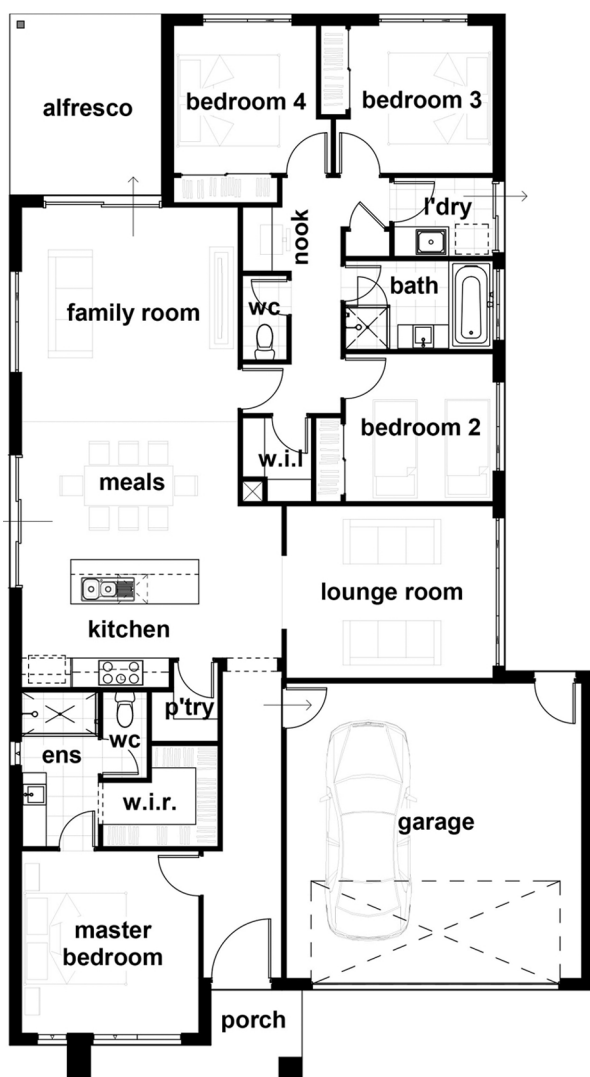


VISION
BUILDING GROUP BALLARAT



House + Land

TURN
KEY
PACKAGE



Brighton 239

🏠 23.9 Sq 🚗 2 Car 🏠 4 Bedroom 🛋️ 2 Living

'The perfect choice for a family wanting to make the best use of space. With a central kitchen, walk in pantry, 2 living areas & ample storage.'

Master bedroom with ensuite at the front of the house, 3 additional bedrooms and study nook for the whole family to enjoy'

- ✓ Facade options available
- ✓ Site Works H Classification
- ✓ 6 Star Energy Rating
- ✓ Premium Inclusions – Colours & Selections
- ✓ Quality Appliances
- ✓ Fencing & Landscaping allowance
- ✓ Turn Key Package

Lot No.203 Drew's Paddock Ballarat
Lot size: 584 m²

\$545,510 INC LAND

visionbg.com.au

Contact: Alan@visionbg.com.au

0419574358



* Facades/Images may not depict actual premium inclusions. Images are for illustration purposes only. Please enquire for landscaping & fencing allowance. Prices subject to change and based on standard plans with no changes. Site allowances are subject to soil report and Engineering report. This brochure is to act as a guide only. Subject to copyright, August 2020.