

# HOUSE & LAND PACKAGE

## \$463,276 - Carvers Reach



### KILLARA 233

Lot 30 Macadamia Circuit

PARK RIDGE - CARVERS REACH

Land Size - 448m<sup>2</sup> House Dimensions - 11.3m x 22.74m



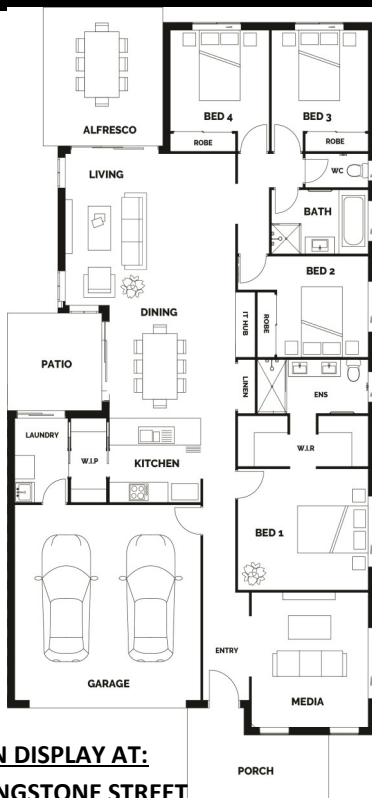
4



2



2



#### Turnkey House Includes:

- H1 Soil Allowance
- Stone Benchtops to kitchen and bathroom
- Stainless Steel Appliances
- LED Downlights Throughout
- Ceiling Fans to bedrooms
- Carpets & Tiles or Timber Look Vinyl Flooring
- Semi Frameless Shower Screens
- Driveway, Letterbox & Clothesline
- Exposed Aggregate Porch and Alfresco
- Colorbond Roof
- Full NBN Provisions
- Personalised Colour Consultation

PLEASE NOTE: There are some features on our House Picture that are at an extra cost. Please note: this does not include piercing or retaining or fencing

#### FLOOR AREA

Living	163.85m <sup>2</sup>
Garage	35.76m <sup>2</sup>
Alfresco	15.12m <sup>2</sup>
Porch	10.26m <sup>2</sup>
Total	233.37m <sup>2</sup>



ON DISPLAY AT:

7 LIVINGSTONE STREET

LOGAN RESERVE!