

HOUSE & LAND PACKAGE

\$458,685 - CARVERS REACH



PIPER 216

Lot 51 Macadamia Circuit

PARK RIDGE—CARVERS REACH

Land Size - 448sqm² House Dimensions - 11.20m x 23.30m



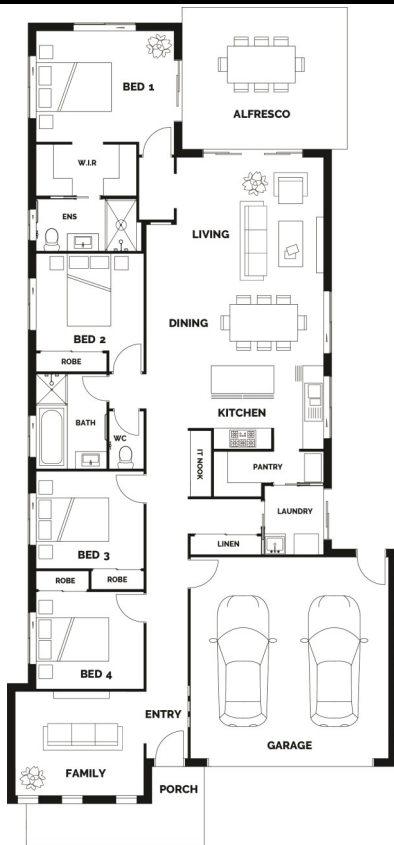
4



2



2



Turnkey House Includes:

- H1 Soil Allowance
- Stone Benchtops to kitchen and bathroom
- Stainless Steel Appliances
- LED Downlights Throughout
- Ceiling Fans to bedrooms
- Carpets & Tiles or Timber Look Vinyl Flooring
- Semi Frameless Shower Screens and Shower Niches
- Driveway, Letterbox & Clothes-line
- Exposed Aggregate Porch and Alfresco
- Colorbond Roof
- Full NBN Provisions

PLEASE NOTE: There are some features on our House Picture that are at an extra cost. Please note: this does not include piercing or retaining or fencing

FLOOR AREA

Living	152.66m ²
Garage	36.19m ²
Alfresco	19.43m ²
Porch	8.12m ²
Total	216.40m ²

