

HOUSE & LAND PACKAGE

\$467,760 - CARVERS REACH



BAHAMA 236

Lot 54 Macadamia Circuit

PARK RIDGE - CARVERS REACH

Land size - 448m² House Dimensions - 12.27m x 21.61m

ON DISPLAY AT:
5 LIVINGSTONE STREET, LOGAN RESERVE



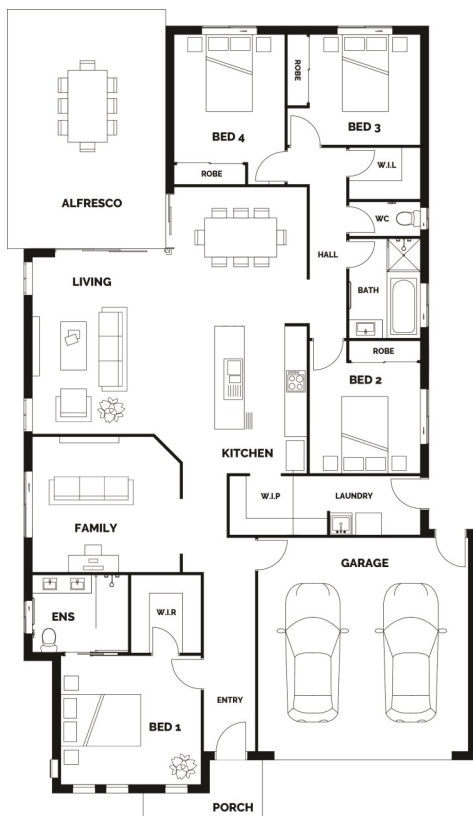
4



2



2



Turnkey House Includes:

- H1 SOIL Allowance
- Stone Benchtops to kitchen and bathroom
- Stainless Steel Appliances
- LED Downlights Throughout
- Ceiling Fans to bedrooms
- Carpets & Tiles or Timber Look Vinyl Flooring
- Semi Frameless Shower Screens
- Driveway, Letterbox & Clothesline
- Exposed Aggregate Porch and Alfresco
- Colorbond Roof
- Full NBN Provisions
- Personalised Colour Consultation

PLEASE NOTE: There are some features on our House Picture that are at an extra cost. Please note: this does not include piling or retaining or fencing

FLOOR AREA

Living	169.06m ²
Garage	36.06m ²
Alfresco	27.84m ²
Porch	3.87m ²
Total	236.83m ²

