



Facade image may depict features such as land, landscaping, timber decking, furniture, window treatments and lighting which are not included in the package price or which are not available from Coral Homes.

**\$412,130\*** **FIXED PRICE**

**CARVER'S REACH ESTATE Lot 47 Macadamia Circuit, Park Ridge**

**4**

**2**  
+OUTDOOR

**2**

**2**

Home Size: 185.72m<sup>2</sup> | Lot Size: 400.00m<sup>2</sup> | 12.50m x 32.00m Lot

**MONTROSE 20** VENTURA FACADE  
**HOME AND LAND PACKAGE INCLUSIONS:**

- ✓ Facade as shown

✓ Carpet and tiling

✓ Fixed price site works

✓ Exposed aggregate driveway and path to entry

✓ Integrated slab to outdoor living area (tiling not included)

✓ Letterbox and turf to the front of home

✓ \$2,500 fencing allowance

✓ Termite resistant structural timber framing
- ✓ Ceasarstone bench tops to kitchen, bathroom and ensuite

✓ Semi-frameless shower screen to bathroom and ensuite

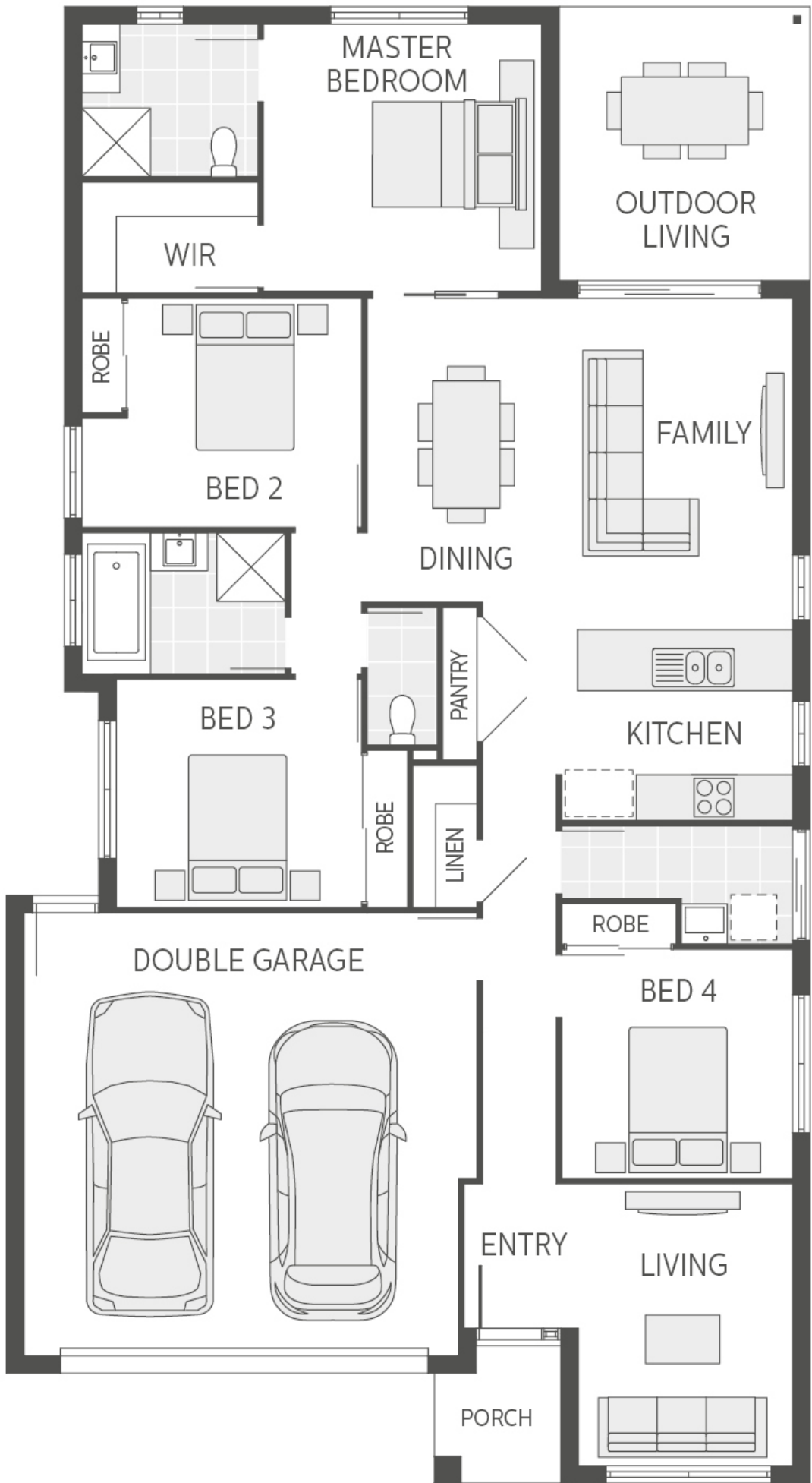
✓ Extended tile height to 2100mm on vanity wall to bathroom and ensuite

✓ Stained timber feature front entry door

✓ Mirror sliding doors to robes

✓ NBN lead in

✓ Panelift automatic garage door with 3 remotes



**FOR MORE INFORMATION**  
**Hannah Edwards | Coral Homes Sales Consultant**  
**[h.edwards@coralhomes.com.au](mailto:h.edwards@coralhomes.com.au)**  
**P: 0448 116 121 | M: 0448 116 121**  
**19 Killara Boulevard, Logan Reserve, QLD**

Floor plan is indicative only, conceptual in nature and subject to change. Floor plan may depict fixtures, fittings, features, finishes, inclusions, furnishings, vehicles and/or other products which are not included in the house design, not included in the package price and/or not available from Coral Homes<sup>1</sup>.

<sup>1</sup>Price shown is based on Coral Homes' 22-07-19 price list. Land price and availability is subject to change at any time and without notice. Land price at the time of printing is \$220,000. Price shown does not include additional amounts payable in respect of variations to the house design requested by the buyer. House siting is to be determined by Coral Homes. <sup>1</sup>Plan is subject to approval by the Principal Developer and Local Authorities. Coral Homes reserves the right to withdraw this package at any time without notice. QBCC 50792/1014053, OFT NSW 62084C, BLD260339.