

HOUSE & LAND PACKAGE

\$427,792 - CARVERS REACH



AVALON 196

Lot 60 New Road

PARK RIDGE CARVERS REACH

Land size - 392m² House Dimensions - 10.8m x 20m



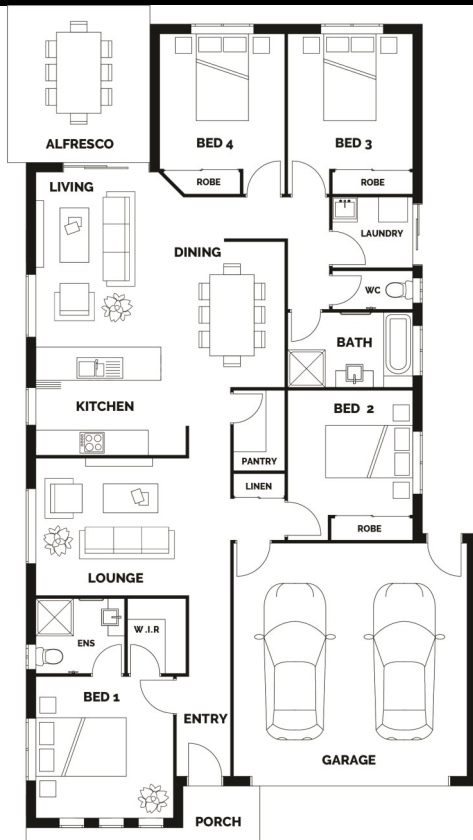
4



2



2



Turnkey House Includes:

- H1 Soil Allowance
- Stone Benchtops to kitchen and bathroom
- Stainless Steel Appliances
- LED Downlights Throughout
- Ceiling Fans to bedrooms
- Carpets & Tiles or Timber Look Vinyl Flooring
- Semi Frameless Shower Screens and Shower Niches
- Driveway, Letterbox & Clothesline
- Exposed Aggregate Porch and Alfresco
- Colorbond Roof
- Full NBN Provisions
- Personalised Colour Consultation

PLEASE NOTE: There are some features on our House Picture that are at an extra cost. Please note: this does not include piling or retaining or fencing

FLOOR AREA

Living	141.24m ²
Garage	34.29m ²
Alfresco	12.89m ²
Porch	8.28m ²
Total	196.67m ²

