

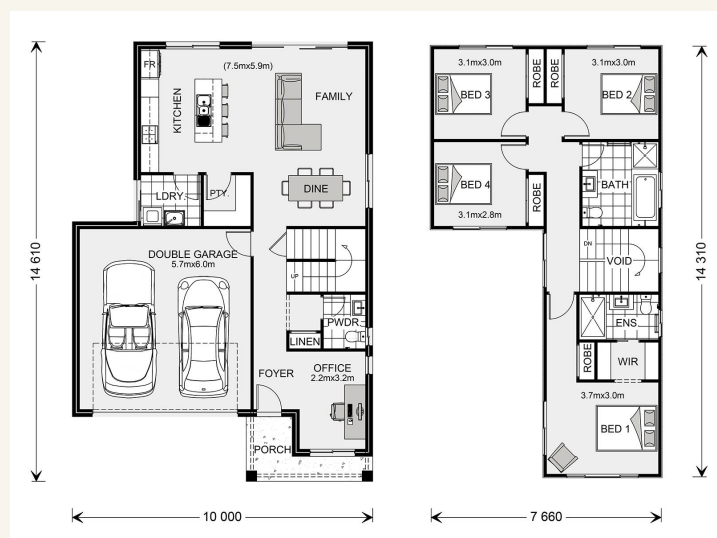


**House and land package from \$414,303\***

**Address: 66 Ironbark Avenue , Park Ridge**

**Inclusions:**

- + Standard Inclusions
- + Upgrade to Beach Facade
- + Exposed Aggregate Driveway
- + Fencing Allowance
- + Turf to Front Yard
- + Turn Key Price



\*Images and photographs may depict fixtures, finishes and features either not supplied by G.J. Gardner Homes or not included in any price stated. These items include furniture, swimming pools, pool decks, fences, landscaping - including planter boxes, retaining walls, water features, pergolas, screens and decorative landscaping items such as fencing and outdoor kitchens and barbeques. For detailed home pricing, please talk to a new homes consultant.

**Sandringham 200 - Express Series**

4 2 2

**Give us a call or drop in for a chat today.**

**Office:**

Jimboomba

14-20 Magnesium Drive , Crestmead Queensland 4132

QBCC: 15006819

**Katelyn Kenrick**

**Sales Consultant**

**Call: 0400931685**

**Email: [katelyn.aspery@gjgardner.com.au](mailto:katelyn.aspery@gjgardner.com.au)**

**Call: 07 3803 6380**

**Email: [jimboomba@gjgardner.com.au](mailto:jimboomba@gjgardner.com.au)**

**Or visit [gjgardner.com.au](http://gjgardner.com.au)**

Welcome **home.**

**G.J. Gardner. HOMES**