

HOME&LAND



CALYPSO 190 \$433,181

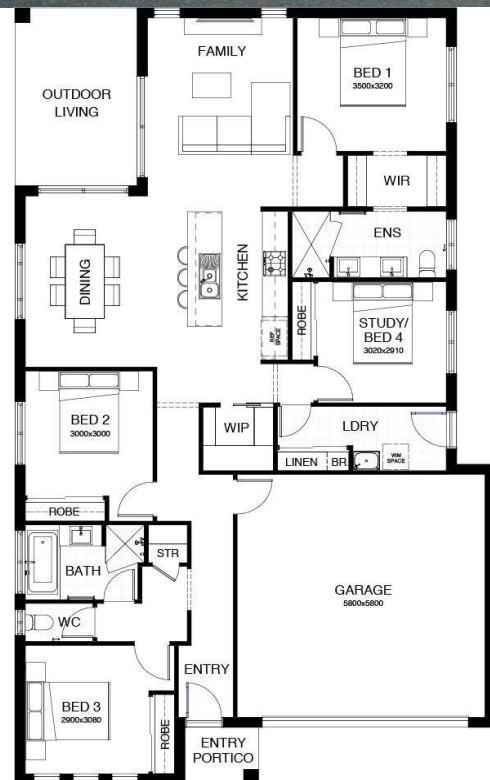
House: \$213,181 | Land: \$220,000

CARVERS REACH ESTATE | PARK RIDGE | LOT 19



HOME INCLUSIONS

- H1 slab allowance
- Colorbond roof
- 2590mm ceiling height throughout
- Floor coverings throughout
- Caesarstone bench tops throughout
- Personalised selections appointment at Evolve Design Studio – Queensland's largest colour and selections studio.
- LED downlights
- 90cm European kitchen appliances
- façade as shown
- Feature entry pivot door
- Landscaping and turf
- Letterbox / clothesline / tv antenna
- Fencing
- Aggregate driveway
- Dishwasher
- 16 week build time guarantee*
- Bushfire BAL12.5 Allowance
- Plus More



Australia's No.1 Medium Builder

CONTACT - Makealah Fraser-Smith

0424 770 772

Makealah@boldliving.com.au