

# House & Land Package



Hamptons Facade

Package Price **\$427,800\***

Lot 19 Ironbark Avenue, Carver's Reach, Park Ridge  
Land size: 350m<sup>2</sup> Nova 190

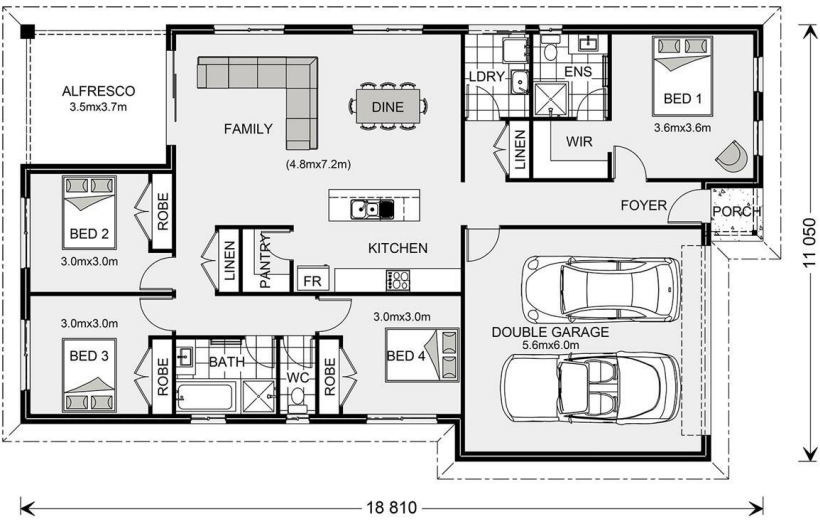
Some highlights included in the package:

- + H1 slab
- + Choice of Colorbond Roof OR flat profile tile
- + Omega stainless steel appliances
- + Stainless Steel Dishwasher
- + Floor coverings
- + Clothesline & Letterbox
- + Hamptons facade
- + LED downlights throughout
- + Custom built cabinetry
- + Soft closing doors & drawers
- + Sealed Exposed aggregate driveway (55m<sup>2</sup>)
- + TV antenna

Award Series

4 2 2

| Floor Areas | Area     |
|-------------|----------|
| Internal    | 137sqm   |
| Garage      | 36.9sqm  |
| Alfresco    | 13sqm    |
| Porch       | 5.5sqm   |
| Total Area  | 192.4sqm |



Give us a call or drop in for a chat today.

DISPLAY: 34 + 36 Bronzewing Circuit, Bahrs Scrub  
Open: Daily, 10am - 5pm.

DISPLAY: 9 Sudbury Drive, Pimpama.  
Open: Daily, 10am - 5pm.

DISPLAY: 15 + 17 Clover Way, Helensvale  
Open: Daily, 10am - 5pm.

Call Hayley Somerfield 0432 114 051  
New Homes Consultant  
G.J. Gardner Gold Coast North  
Phone 5502 3642 or visit [gjgardner.com.au](http://gjgardner.com.au)

DISCLAIMER: Images and photographs may depict fixtures, finishes and features either not supplied by G.J. Gardner Homes or not included in any price stated. For detailed home pricing or to discuss our building time program please talk to a New Homes Consultant. QBCC: 1121765 \*Including GST

Welcome **home.**

**G.J. Gardner.** **HOMES**