

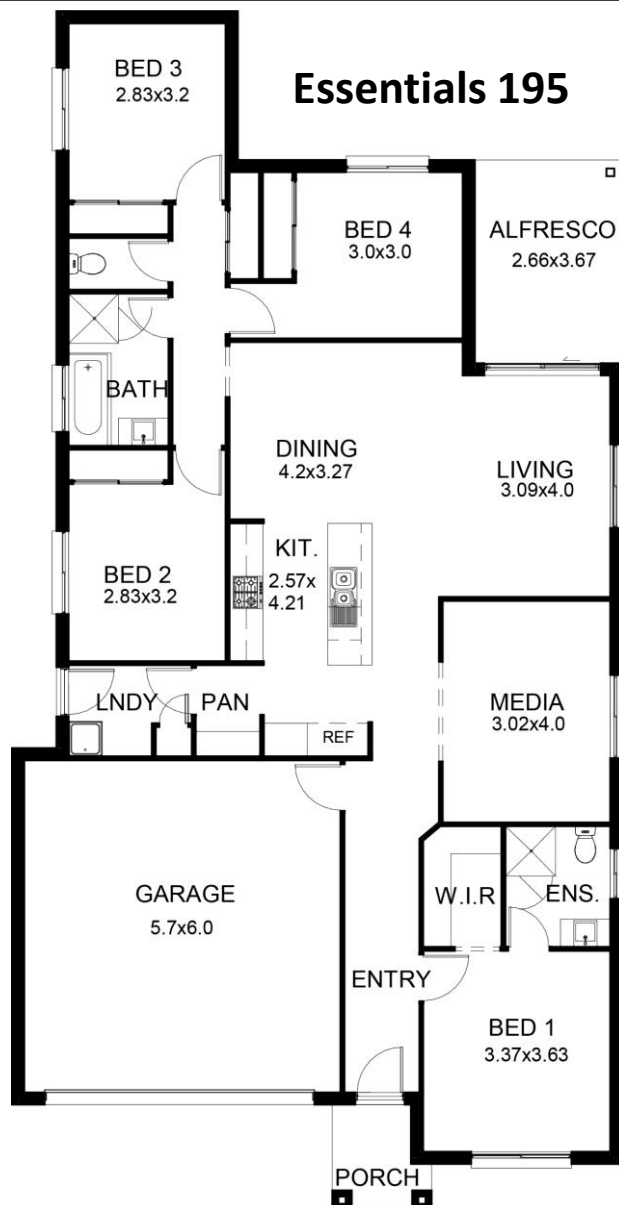
\$449,999 FIXED PRICE Lot 135, Stage3a, Carver Reach

OJ PIPPIN HOMES have been building beautiful homes for Queenslanders for over 25 years



LOT SIZE: 390 m²

Home Size: 205 m²



Just some of our amazing Inclusions:

- ☒ 3 Facades to choose from, all covenant compliant.
- ☒ H1 slab allowance for foundations allowance (Refund if any over)
- ☒ Daikin Split Air Conditioning system to the living
- ☒ Bushfire Attack Level (BAL) provisional sum allowance
- ☒ Carpets & Underlay to the Bedrooms, Rumpus and Landings
- ☒ Timber look Laminate floors or 500x500 tiles to the Ground Floor
- ☒ 900mm or 600mm Westinghouse Stainless Steel Kitchen appliances
- ☒ 20mm Stone Benchtop to Kitchen & Vanity's
- ☒ Overhead Cupboards to Kitchen with laminated bulkheads
- ☒ Full Electrical layout with LED Downlights - Clipsal Iconic fittings
- ☒ Ceiling fans to bedrooms, living and alfresco areas
- ☒ Plumbed in water tap in fridge space
- ☒ Framed glass shower screens – with glass pivot doors
- ☒ Exposed Aggregate Driveway (50m²)
- ☒ Alfresco and porch slab poured at the same time as the house
- ☒ Full Turf, Timber Fencing and Gates to the whole block
- ☒ TV Antenna with three outlet connections
- ☒ Fly Screens to all opening Windows & Sliding Doors
- ☒ Colorbond roof as standard
- ☒ R 2.5 batt insulation to ceiling
- ☒ Custom made Vanities to the Bathrooms and Ensuites
- ☒ All Council fees and Applications included
- ☒ H2 Pressure treated termite resistant timber framing & trusses
- ☒ NBN lead connected to inside the garage
- ☒ Colourbond Panelift automatic garage door with 3 remotes
- ☒ Fully Regulated and guaranteed Termite barrier
- ☒ 1020mm front entry door (design specific) with Trilock
- ☒ Vinyl sliding doors to wardrobes
- ☒ Rendered Façade with 1M returns down the side to the fence

\$409,999

With your government grants