

\$424,999 FIXED PRICE Lot 130, Stage3a, Carver Reach

OJ PIPPIN HOMES have been building beautiful homes for Queenslanders for over 25 years



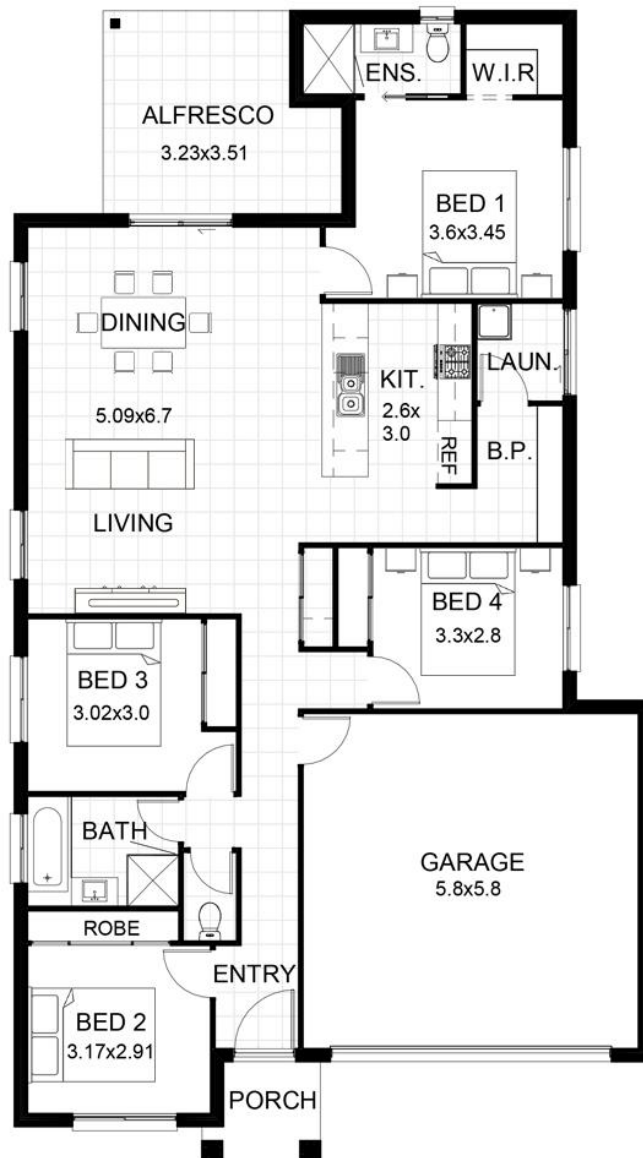
Photo is for illustration only

OJ PIPPIN HOMES



LOT SIZE: 310 m²

Home Size: 186 m²



Just some of our amazing Inclusions:

- ☒ 3 Facades to choose from, all covenant compliant.
- ☒ H1 slab allowance for foundations allowance (Refund if any over)
- ☒ Daikin Split Air Conditioning system to the living
- ☒ Bushfire Attack Level (BAL) provisional sum allowance
- ☒ Carpets & Underlay to the Bedrooms, Rumpus and Landings
- ☒ Timber look Laminate floors or 500x500 tiles to the Ground Floor
- ☒ 900mm or 600mm Westinghouse Stainless Steel Kitchen appliances
- ☒ 20mm Stone Benchtop to Kitchen & Vanity's
- ☒ Overhead Cupboards to Kitchen with laminated bulkheads
- ☒ Full Electrical layout with LED Downlights - Clipsal Iconic fittings
- ☒ Ceiling fans to bedrooms, living and alfresco areas
- ☒ Plumbed in water tap in fridge space
- ☒ Framed glass shower screens – with glass pivot doors
- ☒ Exposed Aggregate Driveway (50m²)
- ☒ Alfresco and porch slab poured at the same time as the house
- ☒ Full Turf, Timber Fencing and Gates to the whole block
- ☒ TV Antenna with three outlet connections
- ☒ Fly Screens to all opening Windows & Sliding Doors
- ☒ Colorbond roof as standard
- ☒ R 2.5 batt insulation to ceiling
- ☒ Custom made Vanities to the Bathrooms and Ensuites
- ☒ All Council fees and Applications included
- ☒ H2 Pressure treated termite resistant timber framing & trusses
- ☒ NBN lead connected to inside the garage
- ☒ Colourbond Panelift automatic garage door with 3 remotes
- ☒ Fully Regulated and guaranteed Termite barrier
- ☒ 1020mm front entry door (design specific) with Trilock
- ☒ Vinyl sliding doors to wardrobes
- ☒ Rendered Façade with 1M returns down the side to the fence

\$384,999

With your government grants