

EXCLUSIVE

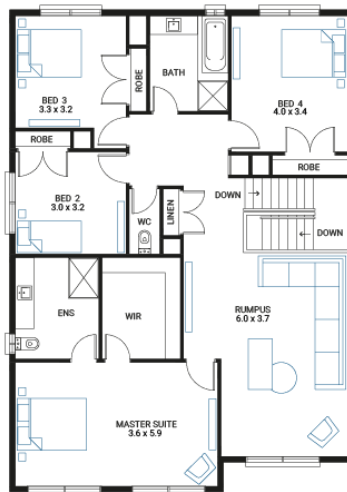
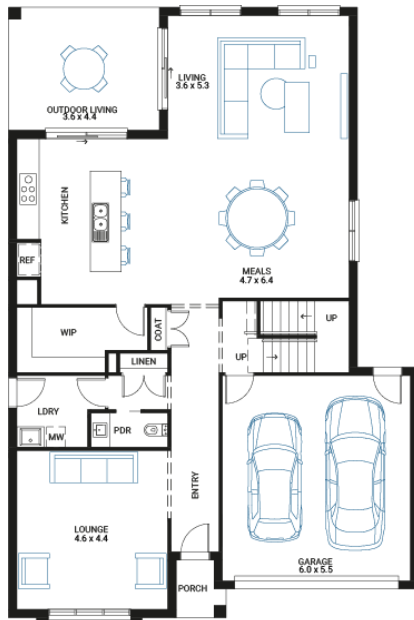


## Jarrah 35

4 2 2

**Address**  
Lot 2423, Orana, Clyde North, 3978

**Facade** Bay Mk2  
**Lot Width** 14  
**Lot size** 444 m<sup>2</sup>  
**House size** 329 m<sup>2</sup>



### Your Inclusions

- Double glazing to all fully glazed aluminium external windows and sliding doors.
- 'Fisher and Paykel' stainless steel appliances (900mm)
- Engineered stone benchtops with 20mm edge profile to Kitchen.
- 2550mm ceiling heights to Ground Floor areas.
- Laminate overhead cupboards with concealed rangehood to Kitchen
- Towel rails and toilet roll holders to wet areas
- Tiled shower bases to Bathroom and Ensuite
- Built in laundry laminate unit with inset trough
- Flooring throughout (tiles and carpet)
- 'Colorbond' Metal Roof
- Insect Screens with fibreglass mesh to all openable windows.
- Gas ducted heating with ceiling outlets to Bedrooms and all Living areas.
- 'Dulux' Wash and Wear 3 Coat paint system to internal walls.
- 25 Year Structural Warranty

Package Enquiries  
Abbey Cole - 0456 651 022,  
abbey@beachwood-homes.com.au

