

HOUSE & LAND PACKAGE

SJDhomes

Building more than homes

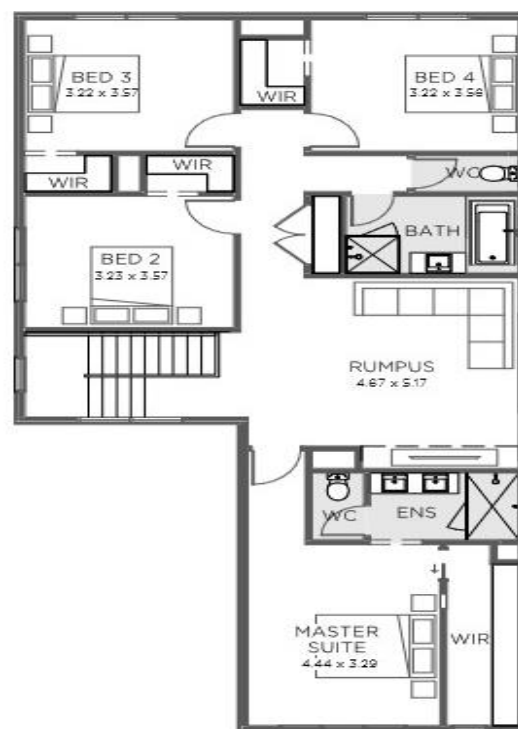
\$865,100

ORANA ESTATE

Lot 1746 Taupe Circuit, Clyde North
House: 31.4sq | Land: 388m² | Frontage: 14m

Mayfair 314 – SJD Signature Range

- Generous Site Cost Allowance
 - 2590mm Ceiling Height to Dwelling
 - 20mm Stone Bench Top to Kitchen
 - Glass or Tiled Splashback
 - 1000mm of Laundry Base Cabinetry
- Plus So Much More!


5 3
2
3

Signature
RANGE

Doreen Macpherson Building Consultant
M: 0404 868 957 **E:** doreen@sjdhomes.com.au
 sjdhomes.com.au

*Some images are for illustration purposes only and may contain items not included in all SJD products. The prices are based on each house as standard and not as displayed. SJD Homes reserves the right to alter prices or the terms without notice. For more information visit: www.sjdhomes.com.au