



The package price is subject to site costs adjustment & does not include any stamp duty, government levies, legal or bank charges. Beachwood Homes Pty. Ltd. reserves the right to amend pricing & inclusions without notice. Alterations may incur additional charges. Note the images used on this brochure are indicative only, please check with our sales team for accurate working drawing details.

Norfolk

House and Land Package

\$847,300*



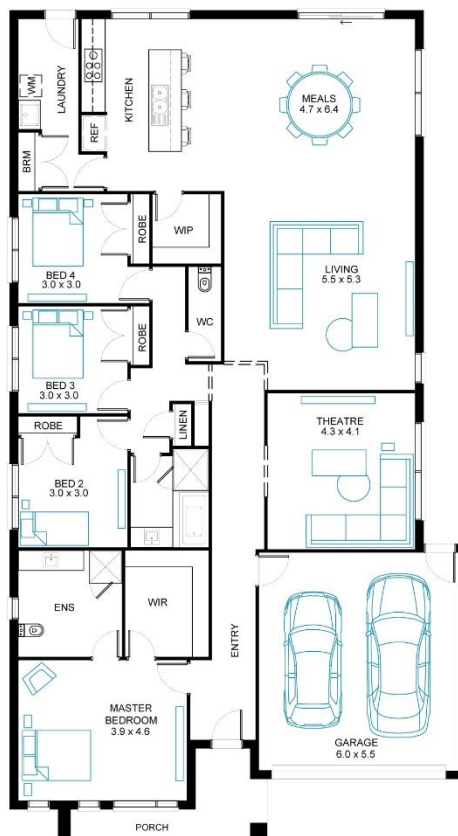
Lot 1843

Land Size 448m² | Frontage 14m

Inclusions List

- 'Fisher and Paykel' stainless steel appliances (900mm)
- Engineered stone benchtops with 20mm edge profile to Kitchen
- Tiled shower bases to Bathroom and Ensuite
- Insect Screens with fibreglass mesh to all openable windows
- 'Dulux' Wash and Wear 3 Coat paint system to internal walls
- Flooring throughout (tiles and carpet)
- 25 Year Structural Warranty

Beachwood
HOMES



375 PATTERSONS ROAD, CLYDE NORTH

ORANACLYDENORTH.COM.AU | 1800 MY ORANA

Balcon
GROUP

CORE | PROJECTS



ORANA
BY BALCON

Visual, verbal or written plans, illustrations, images and information are impressions of orana clyde north. These plans, illustrations, images and information (including but not limited to price, availability, dates, plans, specifications and construction of proposed facilities and infrastructure) are indicative depictions for presentation purposes only and are believed to be correct at the time of publishing but are subject to change without notice. Areas, locations and dimensions are approximates only and are subject to survey. Future transport and other infrastructure and facilities and features are provided for in the precinct structure plan but the size and location is subject to delivery by third parties, site and market conditions, regulatory approvals, final plans and other factors and are not to be relied upon as no warranty or representation is given or to be construed. Purchasers should make their own enquiries, review contracts carefully and obtain independent advice before purchasing.