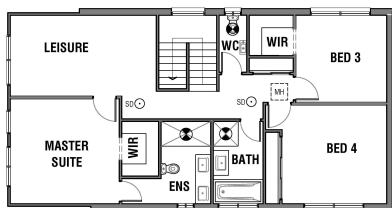


## Hudson 25 - Vive

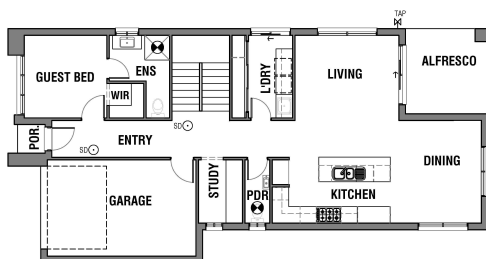
4 3 1 25 sq

Facade name: Hudson

### House Plan:



HUDSON 26 - FIRST FLOOR PLAN



HUDSON 26 - GROUND FLOOR PLAN

#### AREA ANALYSIS

LIVING (GROUND FLR):	95.14sqm
FIRST FLOOR:	100.65sqm
GARAGE:	21.38sqm
PORCH:	1.84sqm
ALFRESCO:	9.27sqm
TOTAL AREA:	231.08sqm 24.87sq

#### AREA ANALYSIS

LIVING (GROUND FLR):	95.14sqm
FIRST FLOOR:	100.65sqm
GARAGE:	21.38sqm
PORCH:	1.84sqm
ALFRESCO:	9.27sqm
TOTAL AREA:	231.08sqm 24.87sq

### LOT #413

Sherwood Grange

Address: Chipperfield Avenue, Sunbury, 3429



819 m<sup>2</sup>

House and land package price:

From **\$879,842\***

### About package:

Package Includes:

- Engineer designed 'M' class waffle slab with up to 300mm cut & fill
- 6-star energy rating
- Choice of facades
- 2590mm ceiling height throughout
- Remote control to the garage
- Timber laminate flooring to Entry, Kitchen, Family and Dining
- Carpet to the remaining areas
- 20mm reconstituted stone to benchtop to Kitchen & Ensuite
- 900mm stainless steel kitchen appliances
- 600mm stainless steel dishwasher
- Overhead cupboards with plaster bulkhead to kitchen
- Soft closing cabinetry mechanisms
- 2000mm high shower screens throughout
- Framed mirrored sliding robe doors
- Ducted heating throughout
- Custom builder with Flexible Floor Plans

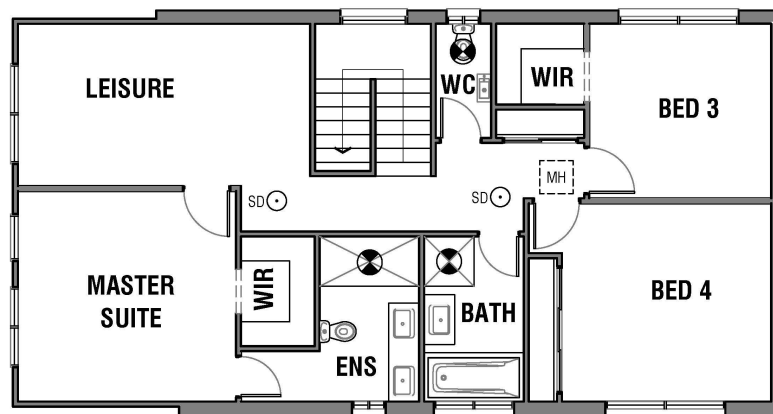
### ENQUIRE NOW:

Chad Simons • P: 0428 258 767 • E: [chad@vivehomes.com.au](mailto:chad@vivehomes.com.au)

Images depicted on this site are for illustration purposes only. Facades and other images of homes and land estates may include optional upgrades, additional fixtures, finishes and home or estate features that are not included in the base price of the home or land package such as landscaping, feature tiling, decking, furnishing, feature lighting, pools, etc. Land estate pricing and plans are subject to developer guidelines and may vary at any time.

Powered by  iBuildNew

REF: IVIVVHL597349



#### AREA ANALYSIS

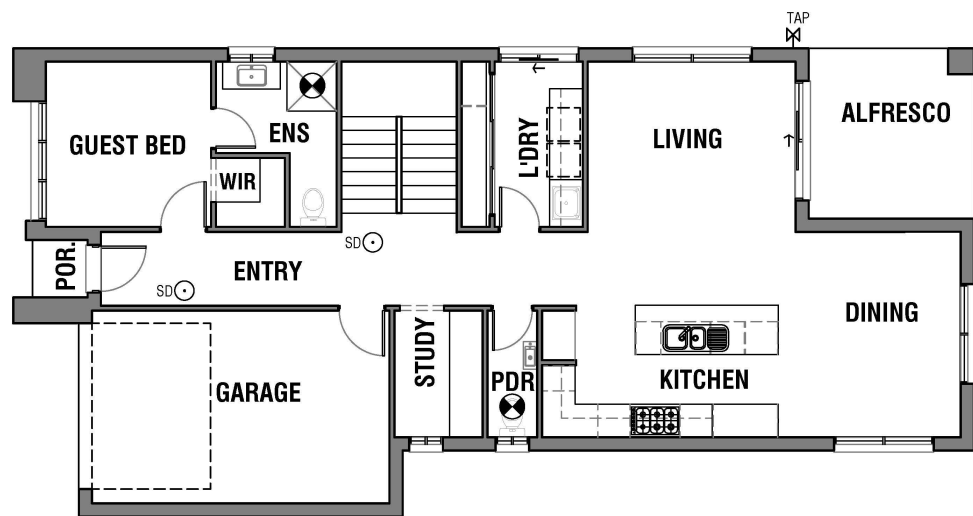
LIVING (GROUND FLR):	98.14sqm
FIRST FLOOR:	100.65sqm
GARAGE:	21.38sqm
PORCH:	1.64sqm
ALFRESCO	9.27sqm
TOTAL AREA:	231.08sqm 24.87sq

## HUDSON 26 - FIRST FLOOR PLAN

#### ENQUIRE NOW:

Chad Simons • P: 0428 258 767 • E: [chad@vivehomes.com.au](mailto:chad@vivehomes.com.au)

Images depicted on this site are for illustration purposes only. Facades and other images of homes and land estates may include optional upgrades, additional fixtures, finishes and home or estate features that are not included in the base price of the home or land package such as landscaping, feature tiling, decking, furnishing, feature lighting, pools, etc. Land estate pricing and plans are subject to developer guidelines and may vary at any time.



#### AREA ANALYSIS

LIVING (GROUND FLR):	98.14sqm	
FIRST FLOOR:	100.65sqm	
GARAGE:	21.38sqm	
PORCH:	1.64sqm	
ALFRESCO:	9.27sqm	
TOTAL AREA:	231.08sqm	24.87sq

## HUDSON 26 - GROUND FLOOR PLAN

#### ENQUIRE NOW:

Chad Simons • P: 0428 258 767 • E: [chad@vivehomes.com.au](mailto:chad@vivehomes.com.au)

Images depicted on this site are for illustration purposes only. Facades and other images of homes and land estates may include optional upgrades, additional fixtures, finishes and home or estate features that are not included in the base price of the home or land package such as landscaping, feature tiling, decking, furnishing, feature lighting, pools, etc. Land estate pricing and plans are subject to developer guidelines and may vary at any time.