



Artist Impression

**\$962,015**

House and Land Package

## Intimate Canvas — 02

Lot 607 — Elizabeth Drive, Sunbury

Land Size 640m<sup>2</sup> — Frontage 16m — House 22.5sq



### INCLUSIONS

- Façade 02 as pictured, includes fully rendered sides and rear
- Site costs and connections allowance
- 6 star energy requirements
- 2590mm ceiling height throughout
- LED fixed downlights throughout
- Developer Requirements allowance
- 20mm engineered stone benchtops to Kitchen and Bathrooms
- Fisher & Paykel 900mm cooktop and undermount rangehood
- Fisher & Paykel 600mm underbench stainless steel oven
- Fisher & Paykel integrated dishwasher
- 1680mm free-standing bath
- “Collection Range” Carpet- Blended (80% wool)
- “Collection Range” Engineered Direct Fix Timber Floor without quads

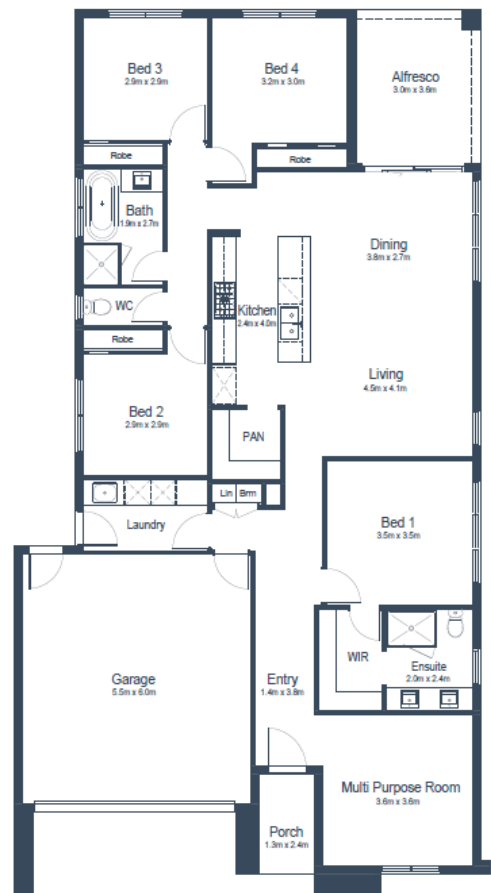


Image for illustrative purposes only. Pricing excludes landscaping, fencing, driveway. Floor plan areas may vary slightly in size depending on facade selection. Floor plans shown are not to scale. Floor plan may be mirrored to suit garage crossover location. Subject to Developer approval. Price effective for 3 months from date of issue.

  
**Sherwood  
Grange**

**GLENVILL  
HOMES**

**CONTACT US TODAY:**  
03 9573 8393  
sales@glenvill.com.au

glenvillhomes.com.au  
480 Church Street,  
Cremorne VIC 3121