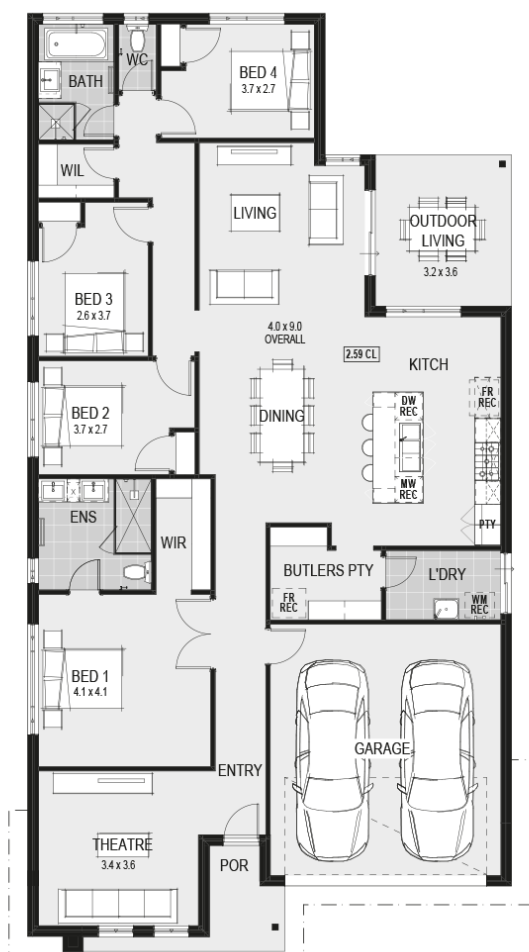




House Plan:



LOT #2024

Estuary

Address: Delmare Drive, Leopold, 3224



406 m²

Oxford 25 - Melbourne - Classic Special

Package Price From

4 2 2 25 sq

\$666,500*

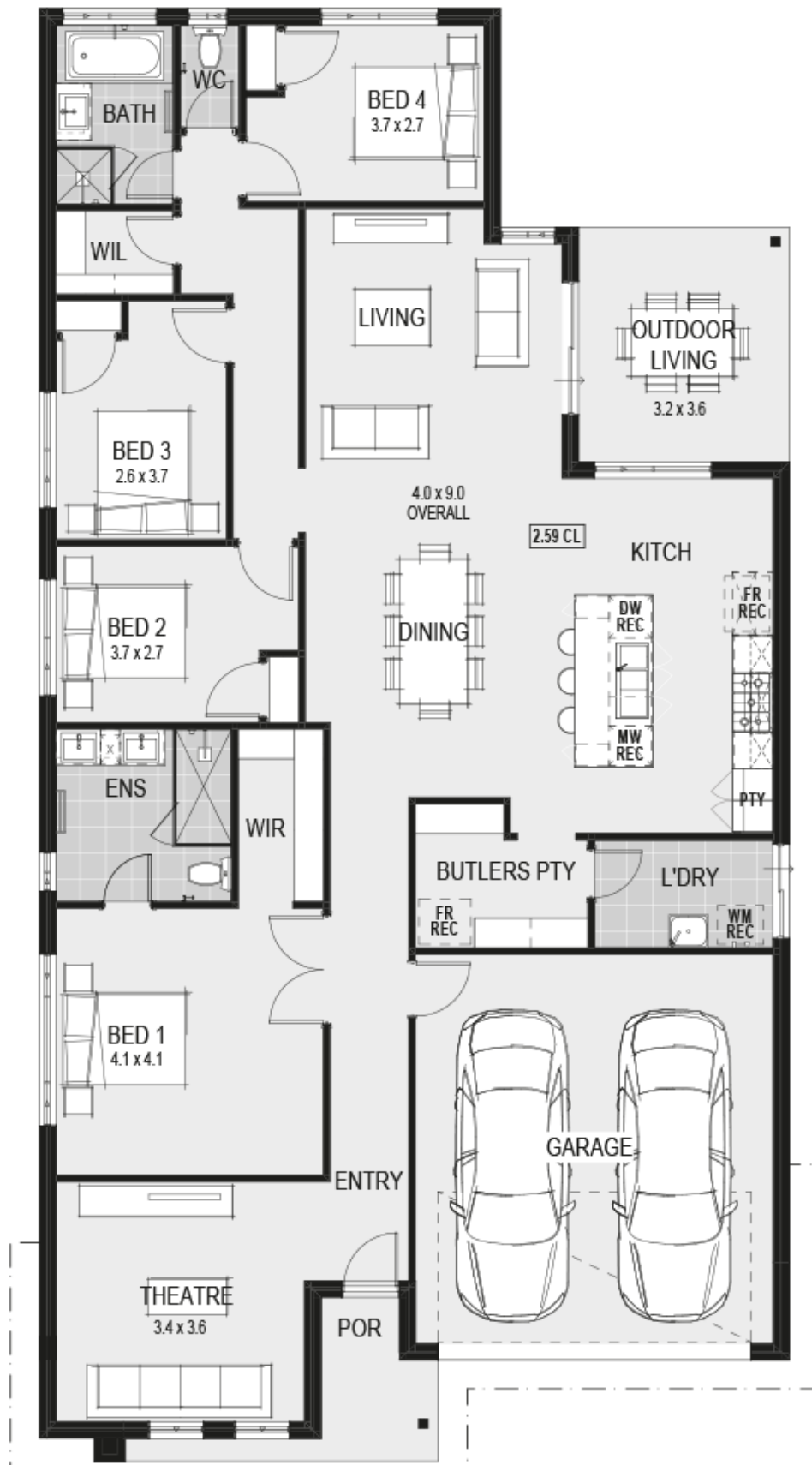
About package:

Including our \$38,000 CONTEMPORARY KITCHEN:

- Huge 1200mm Wide Island Bench with breakfast bar
- Stone Benchtops
- European High Gloss Cabinetry
- European High Gloss Pantry
- Lift up overhead Cupboards
- Extensive Drawers
- 900mm Freestanding Stove
- Integrated Rangehood
- Microwave recess with pot drawer
- Dishwasher recess
- Integrated cutlery drawer
- Plus these Promotions Inclusions for FREE:
- Timber Laminate Flooring & Loop Pile Carpet
- 2590mm high ceilings
- Category 1 Upgraded Façade
- Double Vanity & Double Shower to ensuite*
- Luxe Rainhead Dual Combo showerhead in matte black to Ensuite
- Stone Benchtop to Ensuite & Bathroom
- Double Door Entry to master bedroom*
- 12 to 18 months price hold
- Lifetime warranty
- Developer and Council Requirements

ENQUIRE NOW:

Jarrad Hodge • P: 0418394708 • E: Jarrad.Hodge@homegroup.com.au



ENQUIRE NOW:

Jarrad Hodge • P: 0418394708 • E: Jarrad.Hodge@homegroup.com.au