

Lot 2006, Estuary Estate - Leopold (401)m²

FIXED PRICE

\$685,022*

*First home owners Price - \$675,022

BROCK 23_220
HELM


5



2



2



2



23sq

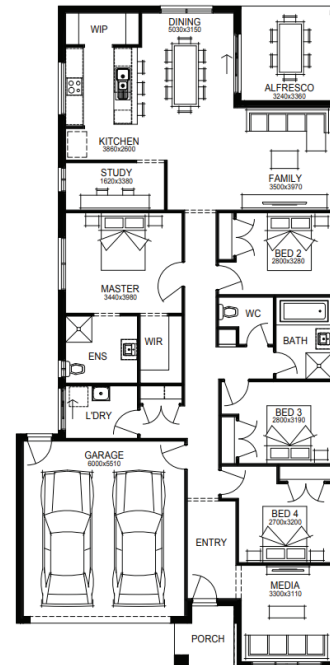
PACKAGE INCLUSIONS:

- Developer & Council requirements
- Floor coverings to entire house
- Coloured concrete driveway & path
- Euro stainless steel cooktop & oven
- Tiled skirting to bathrooms
- Ducted heating
- R2.5 insulations batts to ceiling & sisalation to walls
- 6 star energy rating
- Estate covenants
- And much more!

For enquiries please contact:

Bruno Esposti - 0435219103

bruno.esposti@simonds.com.au


 simonds.com.au

 estuary
 LEOPOLD

SIMONDS
 BUILDING HOMES SINCE 1949