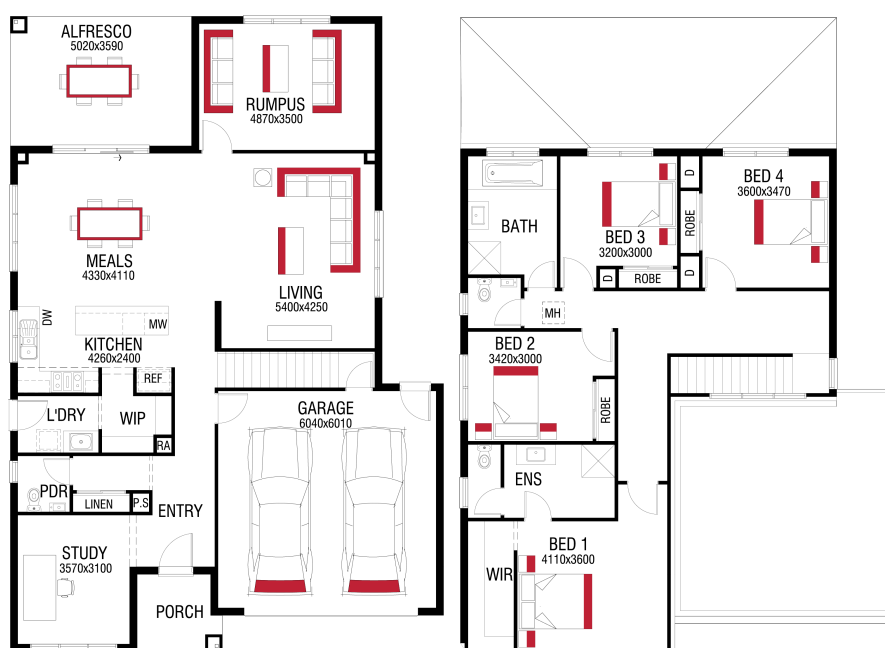


Gemini 1432 🏠 4 🌳 2.5 🚗 2
Lot 2024 Delmare Drive , Estuary , Leopold

HOME SIZE
32 SQS

LAND SIZE
406 m²

PRICED FROM
\$797,000



The Harmac Way

- ✓ 20mm stone benchtop to kitchen
- ✓ 900mm European appliances
- ✓ Downlights Throughout
- ✓ Full rendered Hebel
- ✓ 25 year structural warranty
- ✓ 920mm wide front entry door
- ✓ Fixed site cost
- ✓ Tiled shower bases
- ✓ 2590mm high ceilings to ground floor
- ✓ Coloured concrete driveway
- ✓ Floor coverings throughout
- ✓ Vinyl sliding robes to bedrooms

Cameron King
0409533796
cameron.king@harmachomes.com.au
harmachomes.com.au

Price may not reflect images used including and not limited to such as external lighting, landscaping and fencing. Accordingly, any prices in this flyer do not include the supply of any of those items. Fencing allowance to include full share only and landscaping package option 1. *Home and Land Package price correct at time of printing and subject to change. Package price does not include telephone service, stamp duty on land, legal fees and conveyancing costs including titles and property report. Floorplan is representation of facade depicted unless otherwise stated. See your Harmac Homes sales consultant for full details of standard inclusions. Land supplied by developer. Land prices and availability are subject to change. All home & land packages are subject to developer approval. Additional site costs may apply if site survey and soil tests indicate any variances between original engineering provide at the time of the package. Building licence: CDB-U 58040 HAR21873.