



Carisbrook240

Boathouse

Lot 2024 Delmare Drive
Leopold

4 2 2

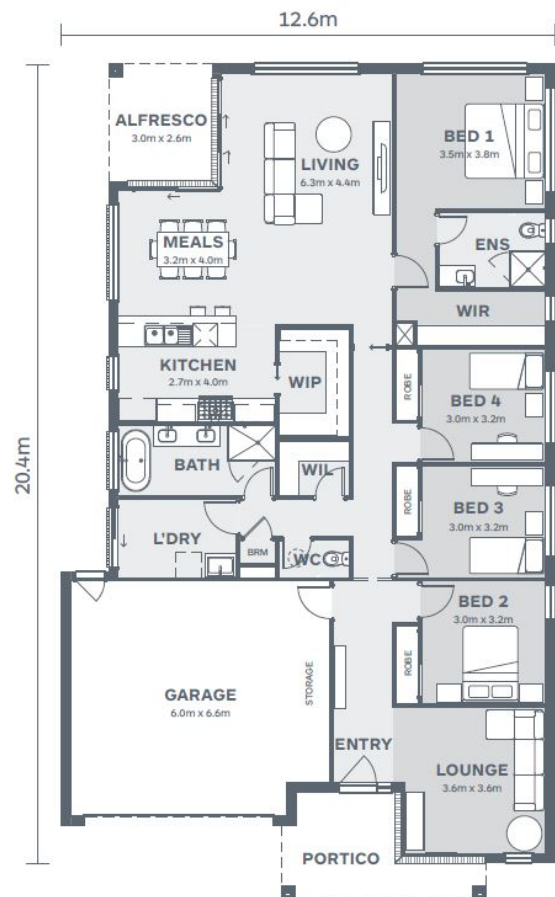
House Size:
25.9SQ
Lot Size:
406m²

Package Price:

\$784,680

It's all included

- Tesla Solar & Battery
- Double Glazed Windows
- Colorbond Steel Roof
- Site Cost Allowance
- Developer Requirements
- 2550mm Ceiling Height
- SMEG 900mm Oven
- SMEG 900mm Underbench Oven & Cooktop
- Stone benchtops to kitchen



HAMLAN

Contact your
new home
consultant **today**

Chris Dooling
chris@hamlan.com.au
0458007776

hamlan.com.au



Local Builders. Local Suppliers. Local People.

Images are for illustrative purposes only and may not represent the final product. Prices are based on availability and price of land. Hamlan Homes reserves the right to alter any price or substitute any home without prior notice. All house and land packages are subject to developers final approval. Speak to a new home consultant for more information. www.hamlan.com.au Images are for illustrative purposes only and may not represent the final product. Prices are based on availability and price of land. Hamlan Homes reserves the right to alter any price or substitute any home without prior notice. Speak to a new home consultant for more information. www.hamlan.com.au

