



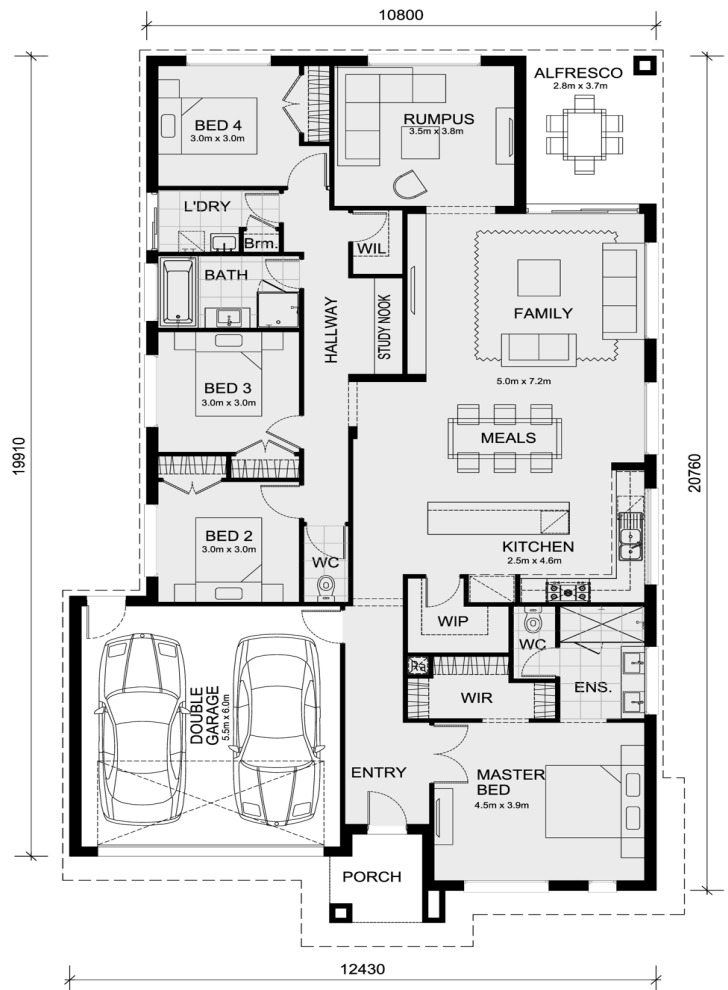
\$646,006

**Lot 2024 Estuary Estate Armadale 253
Leopold**

4  **2**  **2** 

Brand New Design!

- FIXED SITE COSTS- Up to P Class Engineered waffle pod slab(t&c apply)
- 2590mm Ceiling Height
- Brick infill's to sides and rear
- Category 2 range brick selection
- Low profile roof tiles or Colorbond roof
- 3 Remote Control for garage door.
- Colorbond Sectional Garage Door
- Fly Screens to all openable windows.
- 40mm stone bench tops to kitchen
- Soft close drawers and doors
- Under-mount sink to kitchen
- Dishwasher Microwave with Trim Kit & 900mm oven & cooker (homes above 20sq)
- Overhead cupboards & wine rack!
- Tiled shower bases to Bathroom & Ensuite
- 20mm Caesar stone to Bathroom & Ensuite
- 600mm single Towel rails and toilet roll holders
- 800mm wide laminate trough to laundry
- LED downlights in lieu of batten lights
- Low profile Evaporative Cooling or 1Split System
- Home alarm with up to 3 sensors
- NBN Conduit Wire Run
- 6-star energy with solar hot water or 26L



Area Details

Land Size 406sqm Building Size 233sqm

Contact: Beau Huppert
beau@mimosahomes.com.au

0435 123 663
www.mimosahomes.com.au

Disclaimer: Land availability and pricing is subject to the development availability. Mimosa Homes reserves the right to amend specifications and price without notice. All plans and facades are indicative concepts only, and are not intended to be accurate depictions of the building, fencing, paths, driveways or landscaping and are not necessarily to scale all dimensions are

approximate (refer to working drawings). Package prices are based on standard facades and standard inclusions.