



## House Plan:



## LOT #2008

Estuary

Address: Delmare Drive, Leopold, 3224



401 m<sup>2</sup>

## Louisiana 26 - Melbourne - Classic Special

Package Price From

4 2 2 26 sq

**\$690,500\***

## About package:

Including our \$38,000 CONTEMPORARY KITCHEN:

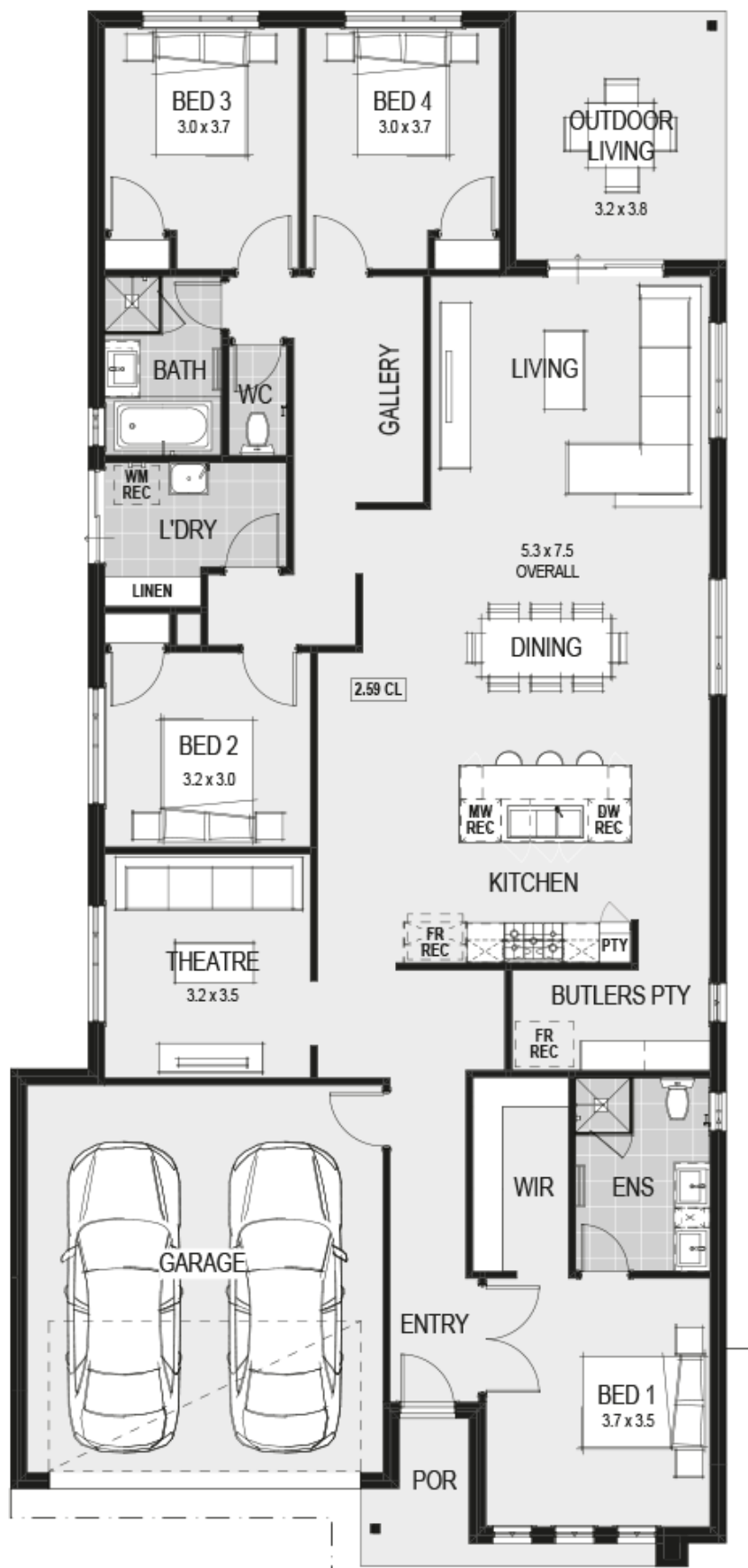
- Contemporary island bench with a stone top and waterfall ends
- Stone Benchtops
- Lift up overhead Cupboards
- 900mm Freestanding Stove
- Integrated Rangehood
- Extensive Drawers
- Microwave recess with pot drawer
- Selection of splashback tiling to underside of overhead cupboards
- Pull out bin
- Integrated cutlery drawer
- Designer handles
- Soft closing doors and drawers
- European designer stainless steel sink
- European designer flick mixer tap to sink

PLUS MUCH MORE:

- 2590mm High Ceilings
- Laminate Flooring OR 450x450mm Main Floor Tiles
- Carpet
- Internal Wall Painting
- Stone Benchtop to Ensuite, Bathroom & Laundry
- Ducted Heating
- European Style Fixtures & Fittings throughout
- Siteworks, Council & Developer Allowance

## ENQUIRE NOW:

Jarrad Hodge • P: 0418 394 708 • E: [jarrad.hodge@homegroup.com.au](mailto:jarrad.hodge@homegroup.com.au)



## ENQUIRE NOW:

Jarrad Hodge • P: 0418 394 708 • E: [jarrad.hodge@homegroup.com.au](mailto:jarrad.hodge@homegroup.com.au)