

Fairhaven



from
\$834,544

LUXURY
Built-In



House: 10.8mW x 21.3mL



House Size: 33.68sq

- Fixed site costs
- Developers guidelines
- Up to a H1 slab design
- Choice of facades
- myHAVEN Selection Appointment
- 2590H ceilings to ground floor
- Flyscreens for all openable windows
- Remote control to the garage
- Evaporative Cooling
- Downlight to Entry, Kitchen, Family and Meals
- Tiles or laminate timber flooring to Entry, Kitchen, Family and Meals. Carpet to the remaining areas
- 20mm reconstituted stone benchtop to Kitchen, Ensuite, Bathroom, Laundry and Powder Room (design specific)
- Up to a 1700mm vanity to Ensuite (design specific)
- 900mm Kitchen appliances, including dishwasher
- Up to 1500 tiled shower base to Ensuite (design specific)



fairhavenhomes.com.au/house-and-land/



Images are for illustration purposes only, driveway, landscaping, external lighting, furniture, window furnishings, & porch deck are not included. All pricing is based on our standard inclusions and site start within 6 months for Elegance & 12 months for Simplicity and Bridgewater from the initial deposit date. Siting of the House is at the discretion of the Builder. The Builders reserves the right to withdraw or amend prices, inclusions, & special offers without notice. House & Land sold separately, & pricing may vary due to land availability. Price does not include: not limited to: transfer duty, stamp duty, settlement costs or any other fees associated with the land settlement. It is the Purchasers responsibility to make independent enquiries into restrictions on the property in relation to MCPs, Developer Guidelines, Covenants, Building Envelopes, POS & Estate Eng. and to confirm land prices & availability before purchasing land. Fairhaven Homes acts as Builder for the sale of the Building only. *House & Land packages excludes block specific corner treatment & acoustics requirements where applicable & are subject to Developers design panel for final approval & may need to be mirrored or altered to comply. The Purchaser may be required to upgrade façade should a similar façade be built/submitted within proximity & additional cost may apply. For full details please contact one of our New Home Consultants. Fairhaven Homes Pty Ltd. CDB-U 48407, T&C's apply. <https://www.fairhavenhomes.com.au/promotion-terms-and-conditions/> for full T&Cs.

Estate: Estuary
Lot: 2024 Delmare Drive, Leopold

Fairhaven



from
\$823,359

LUXURY
Built-In



Newport 361

Block: 14.5mW x 28mL House: 11.66mW x 19.03mL



Block Size: 406m²
Title Exp: December 2024
House Size: 35.98sq

Package Includes:

- Fixed site costs
- Developers guidelines
- Up to a H1 slab design
- Choice of facades
- myHAVEN Selection Appointment
- 2590H ceilings to ground floor
- Flyscreens for all openable windows
- Remote control to the garage
- Evaporative Cooling
- Downlight to Entry, Kitchen, Family and Meals
- Tiles or laminate timber flooring to Entry, Kitchen, Family and Meals. Carpet to the remaining areas
- 20mm reconstituted stone benchtop to Kitchen, Ensuite, Bathroom, Laundry and Powder Room (design specific)
- Up to a 1700mm vanity to Ensuite (design specific)
- 900mm Kitchen appliances, including dishwasher
- Up to 1500 tiled shower base to Ensuite (design specific)



M 0438 680 708

E cboicos@fairhavenhomes.com.au

fairhavenhomes.com.au/house-and-land/



Images are for illustration purposes only, driveway, landscaping, external lighting, furniture, window furnishings, & porch deck are not included. All pricing is based on our standard inclusions and site start within 6 months for Elegance & 12 months for Simplicity and Bridgewater from the initial deposit date. Siting of the House is at the discretion of the Builder. The Builders reserves the right to withdraw or amend prices, inclusions, & special offers without notice. House & Land sold separately, & pricing may vary due to land availability. Price does not include: not limited to: transfer duty, stamp duty, settlement costs or any other fees associated with the land settlement. It is the Purchasers responsibility to make independent enquiries into restrictions on the property in relation to MCPs, Developer Guidelines, Covenants, Building Envelopes, POS & Estate Eng. and to confirm land prices & availability before purchasing land. Fairhaven Homes acts as Builder for the sale of the Building only. *House & Land packages excludes block specific corner treatment & acoustics requirements where applicable & are subject to Developers design panel for final approval & may need to be mirrored or altered to comply. The Purchaser may be required to upgrade façade should a similar façade be built/submitted within proximity & additional cost may apply. For full details please contact one of our New Home Consultants. Fairhaven Homes Pty Ltd. CDB-U 48497. T&C's apply. <https://www.fairhavenhomes.com.au/promotion-terms-and-conditions/> for full T&Cs.

Estate: Estuary
Lot: 2008 Delmare Drive, Leopold

from
\$676,511

Fairhaven



LUXURY
Built-In



Clovelly 225

Block: 12.6mW x 31.8mL House: 11.3mW x 21.07mL



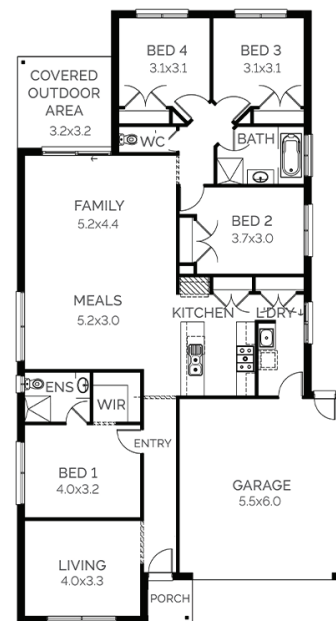
Block Size: 401m²

Title Exp: December 2024

House Size: 22.53sq

Package Includes:

- Fixed site costs
- Developers guidelines
- Up to a H1 slab design
- Choice of facades
- myHAVEN Selection Appointment
- 2590H ceilings to ground floor
- Flyscreens for all openable windows
- Remote control to the garage
- Evaporative Cooling
- Downlight to Entry, Kitchen, Family and Meals
- Tiles or laminate flooring to Entry, Kitchen, Family and Meals. Carpet to the remaining areas
- 20mm reconstituted stone benchtop to Kitchen, Ensuite, Bathroom, Laundry and Powder Room (design specific)
- Up to a 1700mm vanity to Ensuite (design specific)
- 900mm Kitchen appliances, including dishwasher
- Up to 1500 tiled shower base to Ensuite (design specific)



M 0438 680 708

E cboicos@fairhavenhomes.com.au

fairhavenhomes.com.au/house-and-land/



Images are for illustration purposes only, driveway, landscaping, external lighting, furniture, window furnishings, & porch deck are not included. All pricing is based on our standard inclusions and site start within 6 months for Elegance & 12 months for Simplicity and Bridgewater from the initial deposit date. Siting of the House is at the discretion of the Builder. The Builders reserves the right to withdraw or amend prices, inclusions, & special offers without notice. House & Land sold separately, & pricing may vary due to land availability. Price does not include: not limited to: transfer duty, stamp duty, settlement costs or any other fees associated with the land settlement. It is the Purchasers responsibility to make independent enquiries into restrictions on the property in relation to MCPs, Developer Guidelines, Covenants, Building Envelopes, POS & Estate Eng. and to confirm land prices & availability before purchasing land. Fairhaven Homes acts as Builder for the sale of the Building only. *House & Land packages excludes block specific corner treatment & acoustics requirements where applicable & are subject to Developers design panel for final approval & may need to be mirrored or altered to comply. The Purchaser may be required to upgrade façade should a similar façade be built/submitted within proximity & additional cost may apply. For full details please contact one of our New Home Consultants. Fairhaven Homes Pty Ltd. CDB-U 48497. T&C's apply. <https://www.fairhavenhomes.com.au/promotion-terms-and-conditions/> for full T&Cs.

Estate: Estuary
Lot: 2005 Delmare Drive, Leopold

Fairhaven



from
\$665,937

LUXURY
Built-In



Shoal 229

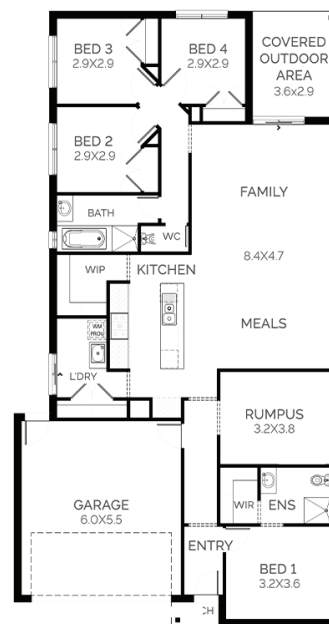
Block: 12.6mW x 31.88mL House: 11.1mW x 21.1mL



Block Size: 402m²
Title Exp: December 2024
House Size: 22.96sq

Package Includes:

- Fixed site costs
- Developers guidelines
- Up to a H1 slab design
- Choice of facades
- myHAVEN Selection Appointment
- 2590H ceilings to ground floor
- Flyscreens for all openable windows
- Remote control to the garage
- Evaporative Cooling
- Downlight to Entry, Kitchen, Family and Meals
- Tiles or laminate flooring to Entry, Kitchen, Family and Meals. Carpet to the remaining areas
- 20mm reconstituted stone benchtop to Kitchen, Ensuite, Bathroom, Laundry and Powder Room (design specific)
- Up to a 1700mm vanity to Ensuite (design specific)
- 900mm Kitchen appliances, including dishwasher
- Up to 1500 tiled shower base to Ensuite (design specific)



M 0438 680 708

E cboicos@fairhavenhomes.com.au

fairhavenhomes.com.au/house-and-land/



Images are for illustration purposes only, driveway, landscaping, external lighting, furniture, window furnishings, & porch deck are not included. All pricing is based on our standard inclusions and site start within 6 months for Elegance & 12 months for Simplicity and Bridgewater from the initial deposit date. Siting of the House is at the discretion of the Builder. The Builders reserves the right to withdraw or amend prices, inclusions, & special offers without notice. House & Land sold separately, & pricing may vary due to land availability. Price does not include: not limited to: transfer duty, stamp duty, settlement costs or any other fees associated with the land settlement. It is the Purchasers responsibility to make independent enquiries into restrictions on the property in relation to MCPs, Developer Guidelines, Covenants, Building Envelopes, POS & Estate Eng. and to confirm land prices & availability before purchasing land. Fairhaven Homes acts as Builder for the sale of the Building only. *House & Land packages excludes block specific corner treatment & acoustics requirements where applicable & are subject to Developers design panel for final approval & may need to be mirrored or altered to comply. The Purchaser may be required to upgrade façade should a similar façade be built/submitted within proximity & additional cost may apply. For full details please contact one of our New Home Consultants. Fairhaven Homes Pty Ltd. CDB-U 48497. T&C's apply. <https://www.fairhavenhomes.com.au/promotion-terms-and-conditions/> for full T&Cs.

Estate: Estuary
Lot: 2008 Delmare Drive, Leopold

Fairhaven



from
\$828,102

LUXURY
Built-In



Tathra 350

Block: 12.6mW x 31.8mL House: 10.6mW x 21.1mL



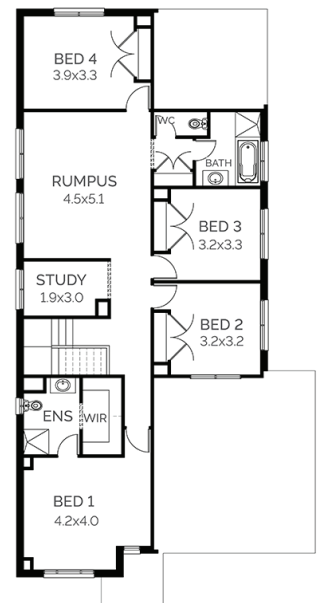
Block Size: 401m²

Title Exp: December 2024

House Size: 34.9sq

Package Includes:

- Fixed site costs
- Developers guidelines
- Up to a H1 slab design
- Choice of facades
- myHAVEN Selection Appointment
- 2590H ceilings to ground floor
- Flyscreens for all openable windows
- Remote control to the garage
- Evaporative Cooling
- Downlight to Entry, Kitchen, Family and Meals
- Tiles or laminate timber flooring to Entry, Kitchen, Family and Meals. Carpet to the remaining areas
- 20mm reconstituted stone benchtop to Kitchen, Ensuite, Bathroom, Laundry and Powder Room (design specific)
- Up to a 1700mm vanity to Ensuite (design specific)
- 900mm Kitchen appliances, including dishwasher
- Up to 1500 tiled shower base to Ensuite (design specific)



M 0438 680 708

E cboicos@fairhavenhomes.com.au

fairhavenhomes.com.au/house-and-land/



Images are for illustration purposes only, driveway, landscaping, external lighting, furniture, window furnishings, & porch deck are not included. All pricing is based on our standard inclusions and site start within 6 months for Elegance & 12 months for Simplicity and Bridgewater from the initial deposit date. Siting of the House is at the discretion of the Builder. The Builders reserves the right to withdraw or amend prices, inclusions, & special offers without notice. House & Land sold separately, & pricing may vary due to land availability. Price does not include: not limited to: transfer duty, stamp duty, settlement costs or any other fees associated with the land settlement. It is the Purchaser's responsibility to make independent enquiries into restrictions on the property in relation to MCPs, Developer Guidelines, Covenants, Building Envelopes, POS & Estate Eng. and to confirm land prices & availability before purchasing land. Fairhaven Homes acts as Builder for the sale of the Building only. *House & Land packages excludes block specific corner treatment & acoustics requirements where applicable & are subject to Developers design panel for final approval & may need to be mirrored or altered to comply. The Purchaser may be required to upgrade facade should a similar facade be built/submitted within proximity & additional cost may apply. For full details please contact one of our New Home Consultants. Fairhaven Homes Pty Ltd. CDB-U 48497. T&C's apply. <https://www.fairhavenhomes.com.au/promotion-terms-and-conditions/> for full T&Cs.

Estate: Estuary
Lot: 2024 Delmare Drive, Leopold

Fairhaven



from
\$683,545

LUXURY
Built-In



Ballina 234

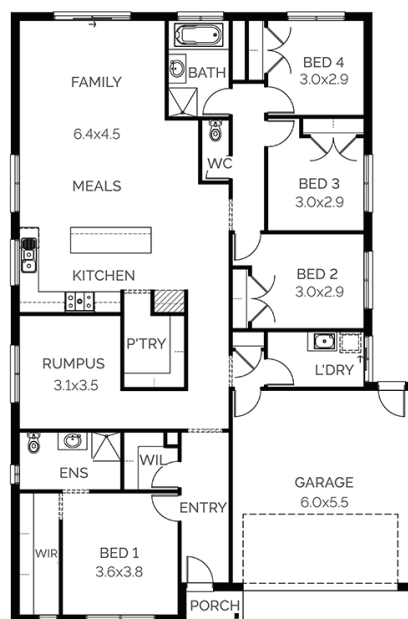
Block: 14.5mW x 28mL House: 12.6mW x 18.96mL



Block Size: 406m²
Title Exp: December 2024
House Size: 23.4sq

Package Includes:

- Fixed site costs
- Developers guidelines
- Up to a H1 slab design
- Choice of facades
- myHAVEN Selection Appointment
- 2590H ceilings to ground floor
- Flyscreens for all openable windows
- Remote control to the garage
- Evaporative Cooling
- Downlight to Entry, Kitchen, Family and Meals
- Tiles or laminate flooring to Entry, Kitchen, Family and Meals. Carpet to the remaining areas
- 20mm reconstituted stone benchtop to Kitchen, Ensuite, Bathroom, Laundry and Powder Room (design specific)
- Up to a 1700mm vanity to Ensuite (design specific)
- 900mm Kitchen appliances, including dishwasher
- Up to 1500 tiled shower base to Ensuite (design specific)



M 0438 680 708

E cboicos@fairhavenhomes.com.au

fairhavenhomes.com.au/house-and-land/



Images are for illustration purposes only, driveway, landscaping, external lighting, furniture, window furnishings, & porch deck are not included. All pricing is based on our standard inclusions and site start within 6 months for Elegance & 12 months for Simplicity and Bridgewater from the initial deposit date. Siting of the House is at the discretion of the Builder. The Builders reserves the right to withdraw or amend prices, inclusions, & special offers without notice. House & Land sold separately, & pricing may vary due to land availability. Price does not include: not limited to: transfer duty, stamp duty, settlement costs or any other fees associated with the land settlement. It is the Purchaser's responsibility to make independent enquiries into restrictions on the property in relation to MCPs, Developer Guidelines, Covenants, Building Envelopes, POS & Estate Eng. and to confirm land prices & availability before purchasing land. Fairhaven Homes acts as Builder for the sale of the Building only. *House & Land packages excludes block specific corner treatment & acoustics requirements where applicable & are subject to Developers design panel for final approval & may need to be mirrored or altered to comply. The Purchaser may be required to upgrade façade should a similar façade be built/submitted within proximity & additional cost may apply. For full details please contact one of our New Home Consultants. Fairhaven Homes Pty Ltd. CDB-U 48497. T&C's apply. <https://www.fairhavenhomes.com.au/promotion-terms-and-conditions/> for full T&Cs.