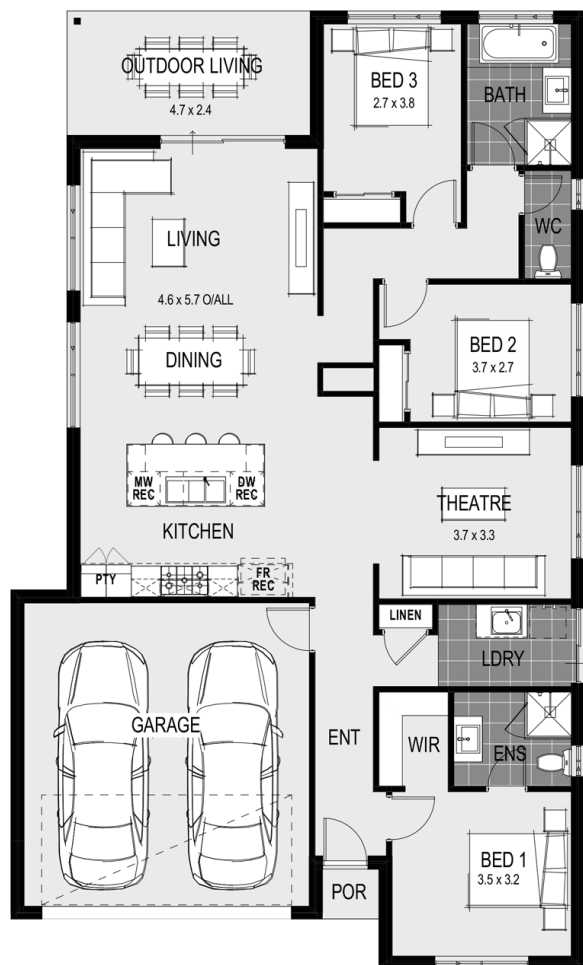




House Plan:



LOT #1339

Alamora

Address: Tawonga Drive, Tarneit, 3029



382 m²

San Luca 20 - Melbourne Designer

Package Price From

3

2

2

20 sq

\$693,890*

About package:

Including our \$30,000 DESIGNER KITCHEN:

- Huge 1200mm Wide Island Bench with breakfast bar
- Stone Benchtops
- European High Gloss Cabinetry
- European High Gloss Pantry
- Lift up overhead Cupboards
- Extensive Drawers
- 900mm Freestanding Stove
- Integrated Rangehood
- Microwave recess with pot drawer
- Dishwasher recess
- Integrated cutlery drawer

PLUS MUCH MORE:

- 2590mm High Ceilings
- Laminate Flooring OR 450x450mm Main Floor Tiles
- Carpet
- LED Downlights throughout
- Internal Wall Painting
- Stone Benchtop to Ensuite, Bathroom & Laundry
- Mirrored Robe Sliding Doors
- Ducted Heating
- European Style Fixtures & Fittings throughout
- Siteworks, Council & Developer Allowance

ENQUIRE NOW:

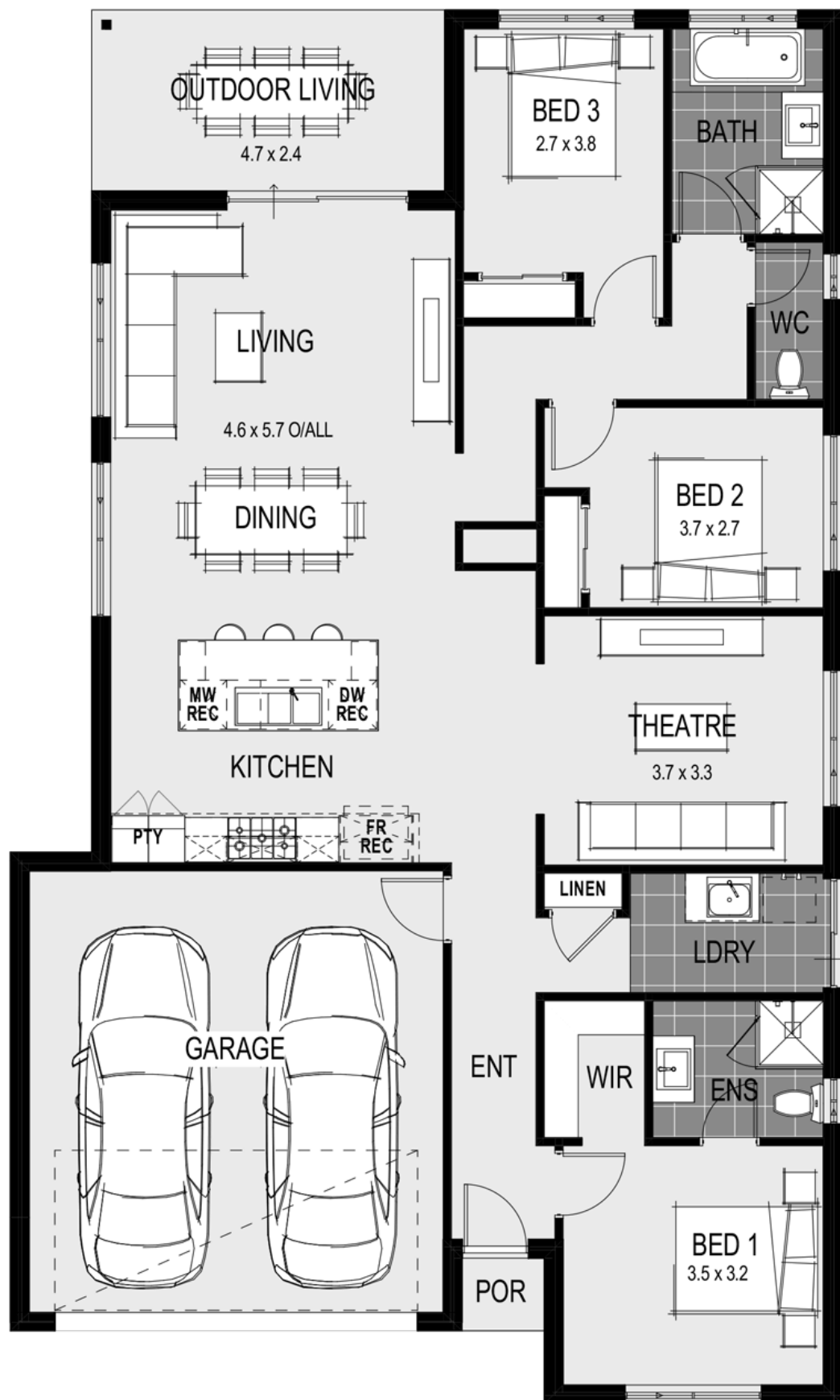
Sumit Sondhi • P: 0430436159 • E: sumit.sondhi@homegroup.com.au

House Features:

- ✓ Multi Items Package
- ✓ NBN connection, Council Charges
- ✓ Site Costs

Estate Features:

- ✓ Tarneit Rise Primary School
- ✓ Tarneit Central Shopping Centre
- ✓ Tarneit Station



ENQUIRE NOW:

Sumit Sondhi • P: 0430436159 • E: sumit.sondhi@homegroup.com.au