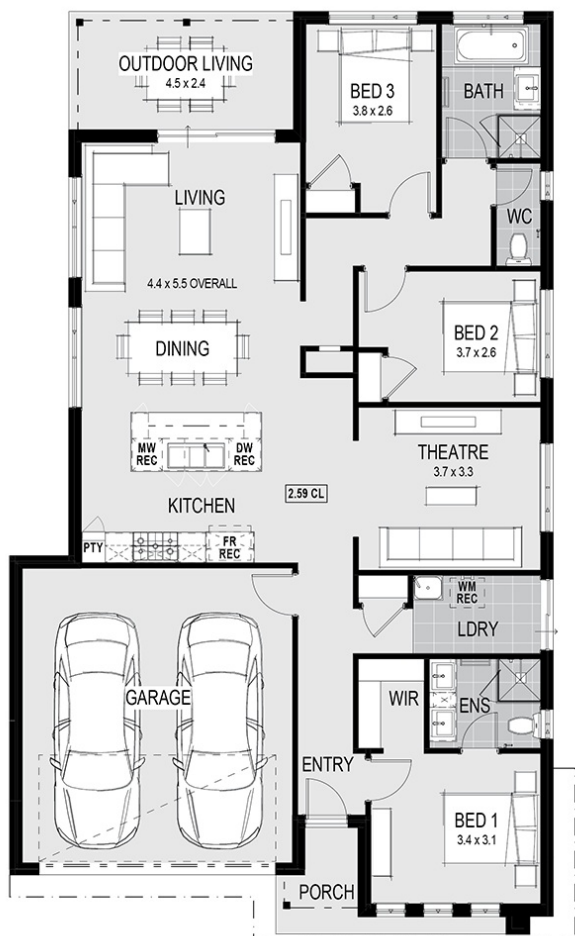




House Plan:



LOT #1339

Alamora

Address: Palia Drive, Tarneit, 3029



382 m²

San Luca 20 - Melbourne Classic

Package Price From

3 2 2 20 sq

\$669,990*

About package:

Including our \$30,000 DESIGNER KITCHEN:

- Huge 1200mm Wide Island Bench with breakfast bar
- Stone Benchtops
- European High Gloss Cabinetry
- European High Gloss Pantry
- Lift up overhead Cupboards
- Extensive Drawers
- 900mm Freestanding Stove
- Integrated Rangehood
- Microwave recess with pot drawer
- Dishwasher recess
- Integrated cutlery drawer

PLUS MUCH MORE:

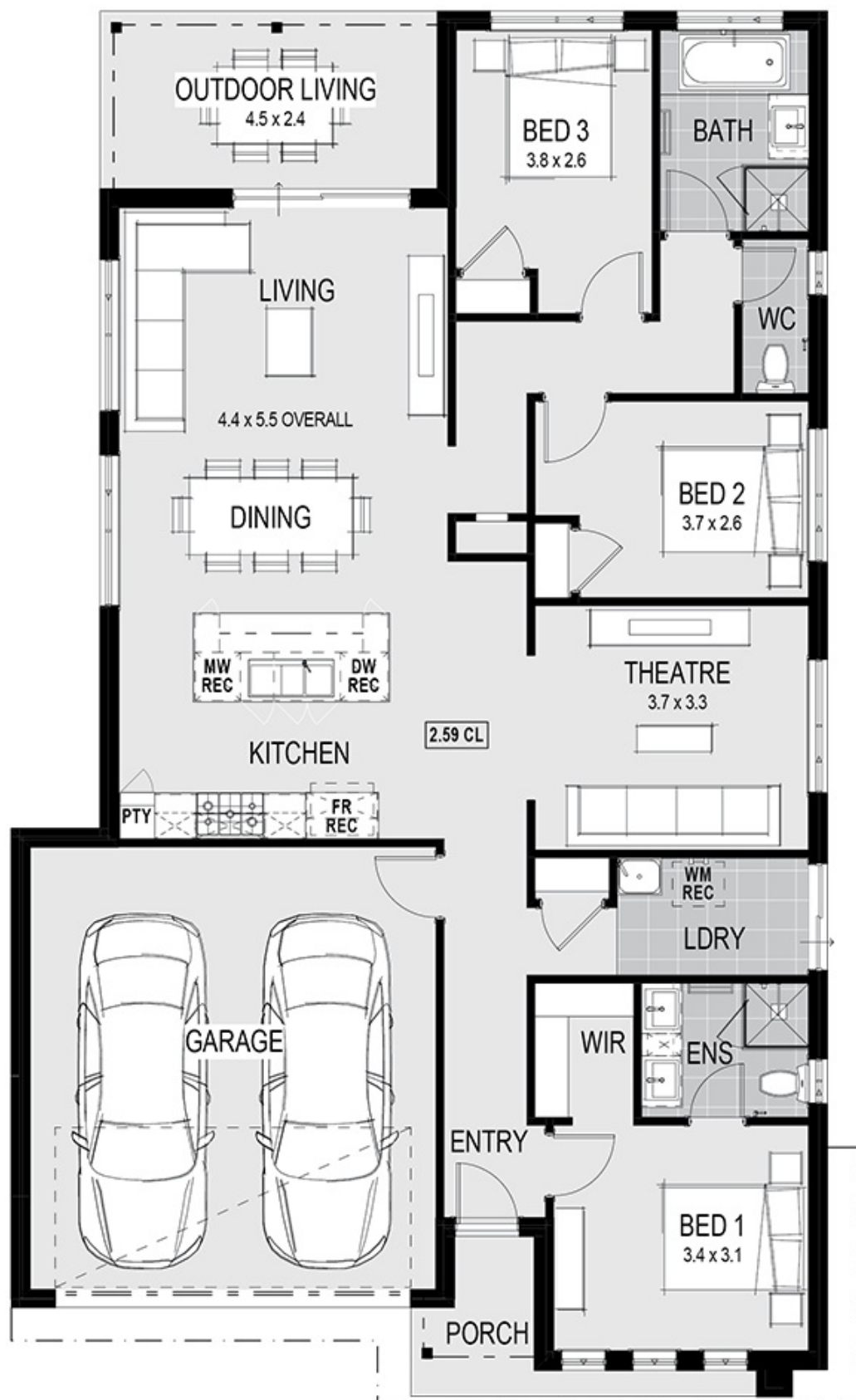
- 2590mm High Ceilings
- Timber Laminate Flooring & Carpet
- Evaporative Cooling
- Stone Benchtop to Ensuite & Bathroom
- Ducted Heating
- Matte Black tapware and fixtures
- Dual combo rainhead shower to Ensuite
- Double vanity to ensuite
- R2.0 external wall insulation & R4.1 to ceiling
- Laser levelling and ceiling batten system
- Acrylic texture coat render to façade
- Independent building inspector
- Siteworks, Council & Developer Allowance

ENQUIRE NOW:

Sumit Sondhi • P: 0430436159 • E: sumit.sondhi@homegroup.com.au

Estate Features:

- ✓ Tarneit Rise Primary School
- ✓ Tarneit Central Shopping Centre
- ✓ Tarneit Station



ENQUIRE NOW:

Sumit Sondhi • P: 0430436159 • E: sumit.sondhi@homegroup.com.au