



Price excludes: Fencing, Landscaping, Concrete pavers, Planter boxes, Decking

FIXED PRICE

\$945,060*

Alamora

Lot 1426 Mossiface Drive, Tarneit

VANTAGE 35 (S SERIES)

LODGE FACADE

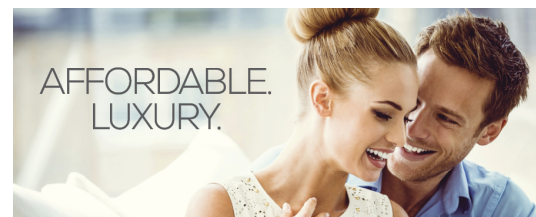
BLOCK SIZE: 350m²



FIXED PRICE PACKAGE INCLUDES:

The Vantage 35 (S Series) with Lodge facade built to our industry leading base specifications, plus:

- All flooring covered throughout your entire home
- Stylish timber laminate floors & carpet to bedrooms (choice of colours)
- Quality tiles to bathrooms, ensuite and laundry
- 20mm Stone Benchtops to Kitchen
- 2 Sets of Overhead Cupboards to Kitchen
- 900mm Stainless Steel dual fuel cooker + Glass Canopy Rangehood
- Coloured Concrete driveway
- Remote controlled garage door
- Lifetime Structural Guarantee
- Fixed site costs



1300 METRICON
www.metricon.com.au

To find out more, contact
Christian Enares on 0413 117 251

BUILD WITH CONFIDENCE



DESIGNER



*Packages correct at time of printing and subject to change without notice. Package includes timber laminate, two strip floating floor. Luxury carpet is 100% Nylon plush pile carpet. Package price excludes external lighting, telephone service, customer account opening fees, stamp duty on land, legal fees and conveyancing costs including titles and property report. Metricon reserves the right to alter the images or descriptions in this flyer without notice. See your Metricon consultant for full details of standard inclusions. Land supplied by developer. Land prices and availability are subject to change without notice. All home & land packages are subject to developer approval. Newfield Real Estate Pty Ltd ACN 159 312 722, Licence number 028051L. VIC Builder's Licence: CDB-U 52967 #For details on our Lifetime structural guarantee visit metricon.com.au/terms/structuralguarantee. Package Printed Date: 18/01/2024 Price Region: Greenfields