

FIXED PRICE

House & Land Package


SIMONDS



BARNARD 22_207 | SIMONDS RANGE

\$689,469*

FIRST HOME OWNERS - \$679,469

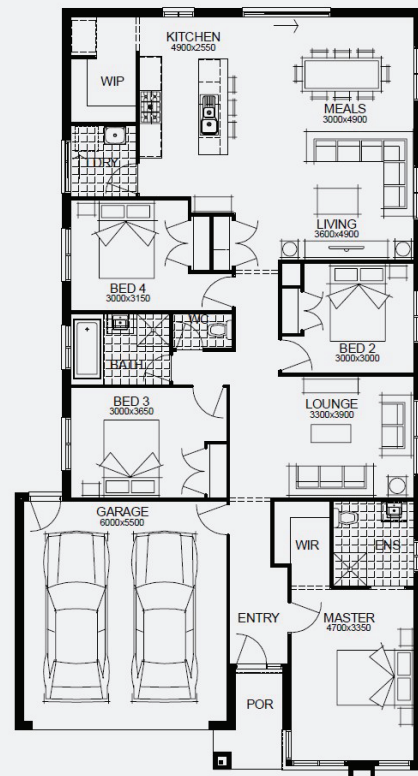
INCLUSIONS

- + Fixed price site costs
- + Floor coverings to entire house
- + Coloured concrete driveway & path
- + Euro stainless steel cooktop & oven
- + Tiled skirting to bathrooms
- + Ducted heating
- + R2.5 insulations batts to ceiling & sisalation to walls
- + Estate covenants & so much more!



**Lot 1315, Tarneit
Alamora Estate (350m²)**


4 2 2 2



For enquiries please contact: **Tatjana Dokic - 0448184746**

simonds.com.au

Images shown are for illustrative purposes only and may not represent the final product such as lighting, window furnishings, timber look garage door & timber windows. Façade details including entry door and window sizing may vary between house types. Pricing also excludes features such as fencing, landscaping, letterbox, decking, driveway and any notable features of the façade. Please speak with your sales consultant for further details. All Fixed Price Home and Land packages are subject to Developer and Council approval and is based on Simonds standard floor plan with preferred siting (without alterations). Package Price does not include stamp duty, government, legal or bank charges. Community Infrastructure Levy and Asset Protection Permit are not included in pricing and is to be arranged by the client directly with the Developer (if applicable). Any alterations may incur additional charges. Confirm land price and availability prior to purchase. Simonds reserves the right to withdraw or amend pricing, inclusions and promotion at any time without notice. Please refer to the terms and conditions at www.simonds.com.au/terms-and-conditions. This package applies to VIC Range range only. Please speak with your sales consultant for further details. Pricing is current at 27/02/2024.



FIXED PRICE

House & Land Package


SIMONDS



BELLENDEN 34_320 | SIMONDS RANGE

\$836,466*

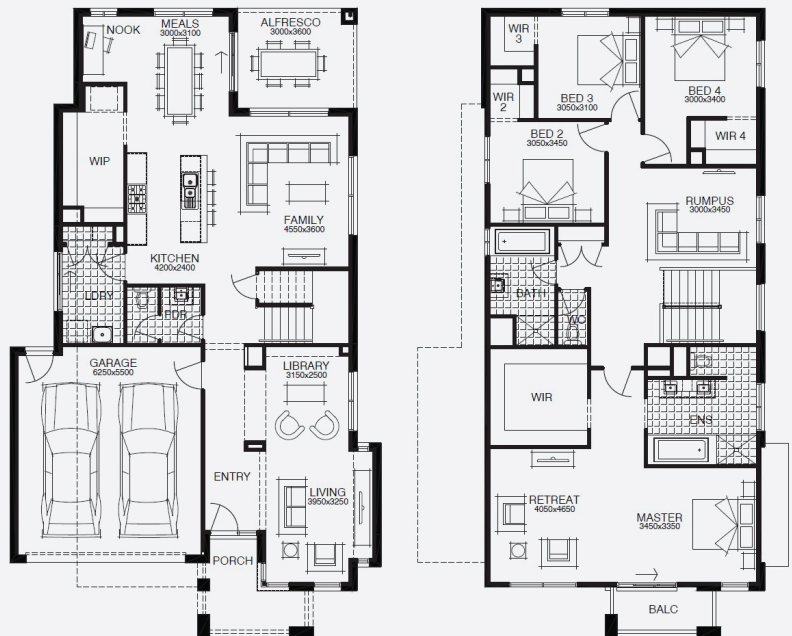
FIRST HOME OWNERS -

INCLUSIONS

- + Fixed price site costs
- + Floor coverings to entire house
- + Coloured concrete driveway & path
- + Euro stainless steel cooktop & oven
- + Tiled skirting to bathrooms
- + Ducted heating
- + R2.5 insulations batts to ceiling & sisalation to walls
- + Estate covenants & so much more!

**Lot 1315, Tarneit
Alamora Estate (350m²)**

   
4 3 2 2



ALAMORA
Tarneit

For enquiries please contact: **Tatjana Dokic - 0448184746**

simonds.com.au

Images shown are for illustrative purposes only and may not represent the final product such as lighting, window furnishings, timber look garage door & timber windows. Façade details including entry door and window sizing may vary between house types. Pricing also excludes features such as fencing, landscaping, letterbox, decking, driveway and any notable features of the façade. Please speak with your sales consultant for further details. All Fixed Price Home and Land packages are subject to Developer and Council approval and is based on Simonds standard floor plan with preferred siting (without alterations). Package Price does not include stamp duty, government, legal or bank charges. Community Infrastructure Levy and Asset Protection Permit are not included in pricing and is to be arranged by the client directly with the Developer (if applicable). Any alterations may incur additional charges. Confirm land price and availability prior to purchase. Simonds reserves the right to withdraw or amend pricing, inclusions and promotion at any time without notice. Please refer to the terms and conditions at www.simonds.com.au/terms-and-conditions. This package applies to VIC Range range only. Please speak with your sales consultant for further details. Pricing is current at 27/02/2024.



FIXED PRICE

House & Land Package


SIMONDS



BELLTHORPE 22_209 | SIMONDS RANGE

FIXED PRICE
GUARANTEE

60K
worth of inclusions
at no extra cost

STRUCTURAL
LIFETIME
GUARANTEE

\$698,631*

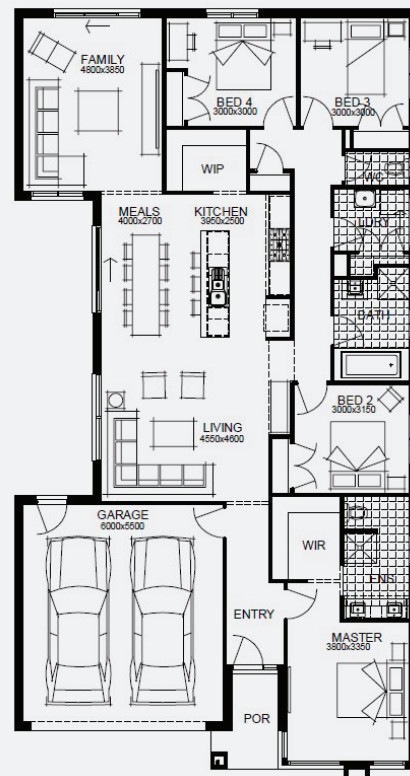
FIRST HOME OWNERS - \$688,631

INCLUSIONS

- + Fixed price site costs
- + Floor coverings to entire house
- + Coloured concrete driveway & path
- + Euro stainless steel cooktop & oven
- + Tiled skirting to bathrooms
- + Ducted heating
- + R2.5 insulations batts to ceiling & sisalation to walls
- + Estate covenants & so much more!

Lot 1315, Tarneit
Alamora Estate (350m²)

 **4**  **2**  **2**  **2**



For enquiries please contact: **Tatjana Dokic - 0448184746**

simonds.com.au

Images shown are for illustrative purposes only and may not represent the final product such as lighting, window furnishings, timber look garage door & timber windows. Façade details including entry door and window sizing may vary between house types. Pricing also excludes features such as fencing, landscaping, letterbox, decking, driveway and any notable features of the façade. Please speak with your sales consultant for further details. All Fixed Price Home and Land packages are subject to Developer and Council approval and is based on Simonds standard floor plan with preferred siting (without alterations). Package Price does not include stamp duty, government, legal or bank charges. Community Infrastructure Levy and Asset Protection Permit are not included in pricing and is to be arranged by the client directly with the Developer (if applicable). Any alterations may incur additional charges. Confirm land price and availability prior to purchase. Simonds reserves the right to withdraw or amend pricing, inclusions and promotion at any time without notice. Please refer to the terms and conditions at www.simonds.com.au/terms-and-conditions. This package applies to VIC Range range only. Please speak with your sales consultant for further details. Pricing is current at 27/02/2024.



FIXED PRICE

House & Land Package


SIMONDS



FIXED PRICE
GUARANTEE

60K
worth of inclusions
at no extra cost

STRUCTURAL
LIFETIME
GUARANTEE

BYFIELD 19_179 | SIMONDS RANGE

\$665,834*

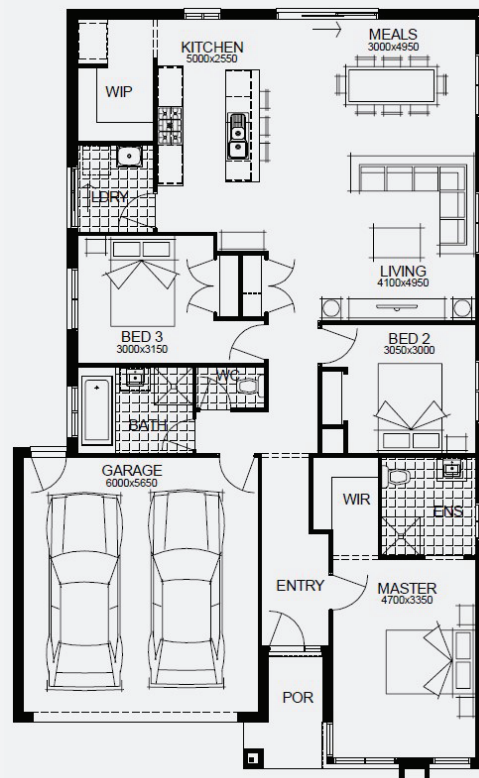
FIRST HOME OWNERS - \$655,834

INCLUSIONS

- + Fixed price site costs
- + Floor coverings to entire house
- + Coloured concrete driveway & path
- + Euro stainless steel cooktop & oven
- + Tiled skirting to bathrooms
- + Ducted heating
- + R2.5 insulations batts to ceiling & sisalation to walls
- + Estate covenants & so much more!

Lot 1315, Tarneit
Alamora Estate (350m²)

   
3 1 2 2



ALAMORA
Tarneit

For enquiries please contact: **Tatjana Dokic - 0448184746**

simonds.com.au

Images shown are for illustrative purposes only and may not represent the final product such as lighting, window furnishings, timber look garage door & timber windows. Façade details including entry door and window sizing may vary between house types. Pricing also excludes features such as fencing, landscaping, letterbox, decking, driveway and any notable features of the façade. Please speak with your sales consultant for further details. All Fixed Price Home and Land packages are subject to Developer and Council approval and is based on Simonds standard floor plan with preferred siting (without alterations). Package Price does not include stamp duty, government, legal or bank charges. Community Infrastructure Levy and Asset Protection Permit are not included in pricing and is to be arranged by the client directly with the Developer (if applicable). Any alterations may incur additional charges. Confirm land price and availability prior to purchase. Simonds reserves the right to withdraw or amend pricing, inclusions and promotion at any time without notice. Please refer to the terms and conditions at www.simonds.com.au/terms-and-conditions. This package applies to VIC Range range only. Please speak with your sales consultant for further details. Pricing is current at 27/02/2024.





HOME AND LAND

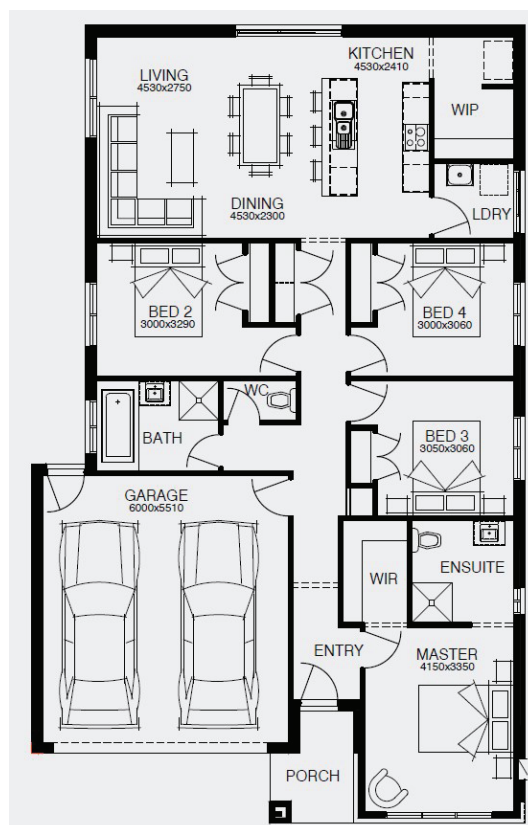
LOT 1315, ALAMORA ESTATE, TARNEIT (350M2)

FLOOR PLAN: GRAMERCY - HAFF
19_176
FACADE: APOLLO

\$735,151

4 🚗 2 🍷 2 🚗 1 🛏 19sq 📏

PACKAGE INCLUSIONS:



For enquiries please contact:
Tatjana Dokic
0448184746
Simonds.com.au

Metro West
VIC
tatjana.dokic@simonds.com.au

ALAMORA
TARNEIT

FIXED PRICE

House & Land Package


SIMONDS



HILLSBOROUGH 22_208 | SIMONDS RANGE

\$689,724*

FIRST HOME OWNERS - \$679,724

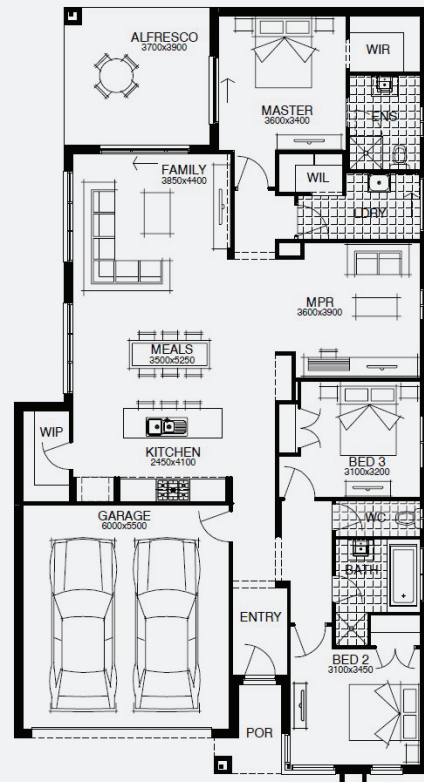
INCLUSIONS

- + Fixed price site costs
- + Floor coverings to entire house
- + Coloured concrete driveway & path
- + Euro stainless steel cooktop & oven
- + Tiled skirting to bathrooms
- + Ducted heating
- + R2.5 insulations batts to ceiling & sisalation to walls
- + Estate covenants & so much more!



**Lot 1315, Tarneit
Alamora Estate (350m²)**

 **3**  **2**  **2**  **2**



For enquiries please contact: **Tatjana Dokic - 0448184746**

simonds.com.au

Images shown are for illustrative purposes only and may not represent the final product such as lighting, window furnishings, timber look garage door & timber windows. Façade details including entry door and window sizing may vary between house types. Pricing also excludes features such as fencing, landscaping, letterbox, decking, driveway and any notable features of the façade. Please speak with your sales consultant for further details. All Fixed Price Home and Land packages are subject to Developer and Council approval and is based on Simonds standard floor plan with preferred siting (without alterations). Package Price does not include stamp duty, government, legal or bank charges. Community Infrastructure Levy and Asset Protection Permit are not included in pricing and is to be arranged by the client directly with the Developer (if applicable). Any alterations may incur additional charges. Confirm land price and availability prior to purchase. Simonds reserves the right to withdraw or amend pricing, inclusions and promotion at any time without notice. Please refer to the terms and conditions at www.simonds.com.au/terms-and-conditions. This package applies to VIC Range range only. Please speak with your sales consultant for further details. Pricing is current at 27/02/2024.



FIXED PRICE

House & Land Package


SIMONDS



LIVINGSTON 21_202 | SIMONDS RANGE

\$682,197*

FIRST HOME OWNERS - \$672,197

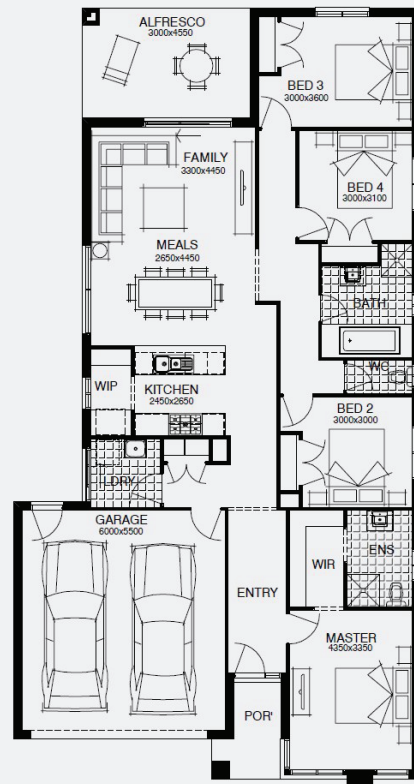
INCLUSIONS

- + Fixed price site costs
- + Floor coverings to entire house
- + Coloured concrete driveway & path
- + Euro stainless steel cooktop & oven
- + Tiled skirting to bathrooms
- + Ducted heating
- + R2.5 insulations batts to ceiling & sisalation to walls
- + Estate covenants & so much more!



Lot 1315, Tarneit
Alamora Estate (350m²)

   
4 2 2 2



For enquiries please contact: **Tatjana Dokic - 0448184746**

simonds.com.au

Images shown are for illustrative purposes only and may not represent the final product such as lighting, window furnishings, timber look garage door & timber windows. Façade details including entry door and window sizing may vary between house types. Pricing also excludes features such as fencing, landscaping, letterbox, decking, driveway and any notable features of the façade. Please speak with your sales consultant for further details. All Fixed Price Home and Land packages are subject to Developer and Council approval and is based on Simonds standard floor plan with preferred siting (without alterations). Package Price does not include stamp duty, government, legal or bank charges. Community Infrastructure Levy and Asset Protection Permit are not included in pricing and is to be arranged by the client directly with the Developer (if applicable). Any alterations may incur additional charges. Confirm land price and availability prior to purchase. Simonds reserves the right to withdraw or amend pricing, inclusions and promotion at any time without notice. Please refer to the terms and conditions at www.simonds.com.au/terms-and-conditions. This package applies to VIC Range range only. Please speak with your sales consultant for further details. Pricing is current at 27/02/2024.

