

Lot 468.



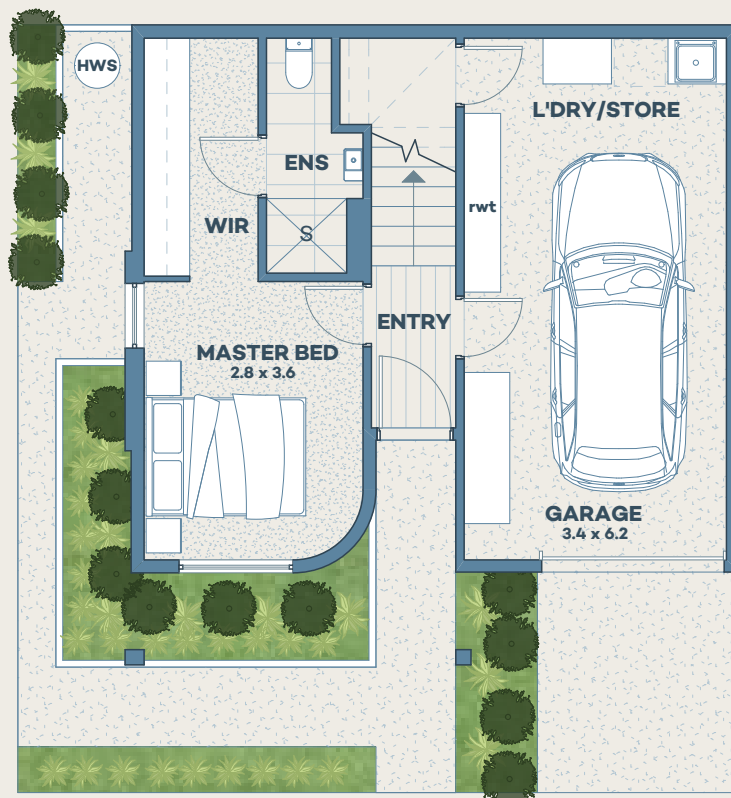
Artist Impression.
Refer to build contract plans

Array 1.

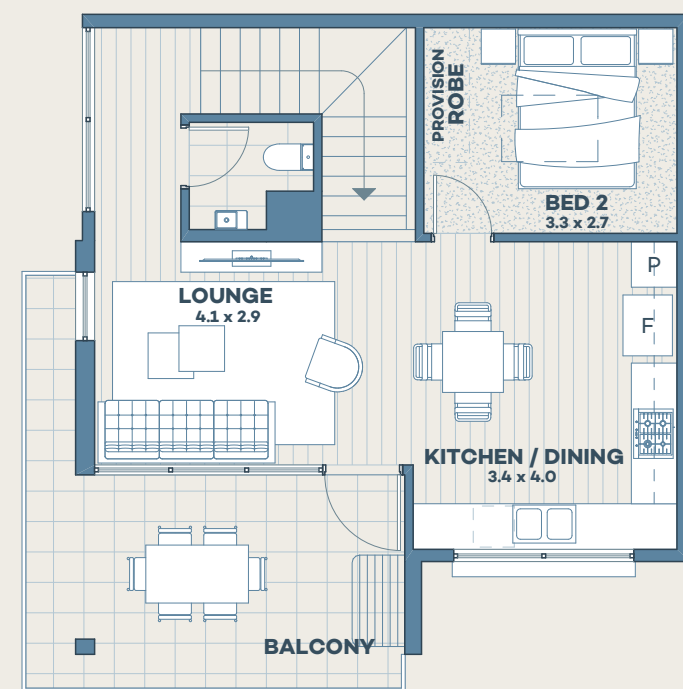
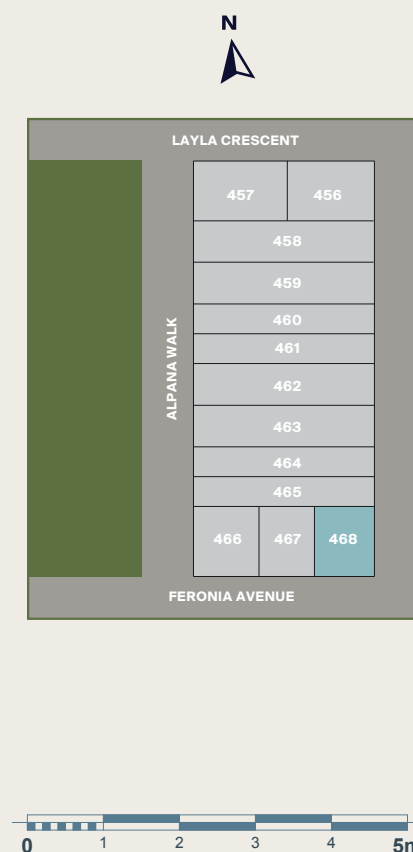
villawood
properties

VILLARANGE.COM.AU

VillaRange
BY VILLAWOOD
PROPERTIES





GROUND FLOOR PLAN



FIRST FLOOR PLAN

LOT 468

 2  1.5  1

Areas

Land Size 85.8m²

House Area

Ground Floor 29.22m²

First Floor 53.02m²

Internal Total 82.24m²

Garage 26.33m²

Balcony 16.56m²

Porch 2.07m²

House Area Total 127.20m²



Artist Impression.
Refer to build contract plans

Key design features.

- Reverse living with open plan kitchen/dining and living areas on level 1.
- 2.7-metre-high ceilings allowing ample natural light throughout living areas.
- Spacious balcony with direct access off living areas.
- Walk-in robe and ensuite to Master Bedroom.
- Single car garage with in-built laundry.
- Flexible space on level 1 - second bedroom or home office.
- Ample natural light to living areas.

Sustainability as standard.

Each VillaRange home comes with a 9-star sustainability rating.

- ☆ Double Glazed windows throughout
- ☆ Minimum 1.5kw PV Solar Panel System
- ☆ 2000L Rainwater tank connected to plumbing
- ☆ No gas appliances – All electric home
- ☆ LED Lights throughout home
- ☆ Electric car charging provision to the garage
- ☆ Energy-efficient electric heat pump hot water system
- ☆ Energy efficient reverse cycle split system
- ☆ Living room ceiling fan