

House & Land Package

Lumina
by ARDEN

ARDEN
HOMES



RUBY 23 DEVONPORT FAÇADE

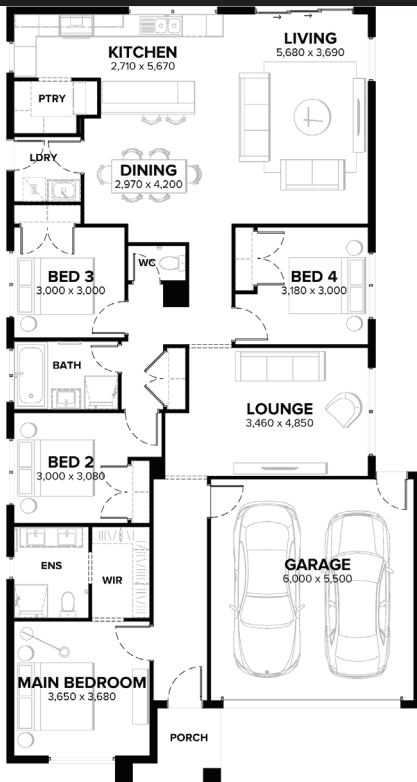
4 bedrooms 2 bathrooms 2 cars

LOT 1319 (350 m²)

CANDELO WAY, ALAMORA, TARNEIT

HOUSE & LAND PACKAGE

\$750,956*



- 7 star energy rating
- All-electric home
- COLORBOND® steel roof and panel lift garage door with remote
- 6.6KW Solar PV system
- 20mm Caesarstone Mineral benchtops to kitchen
- Selection of Haier appliances
- Haier ducted reverse-cycle heating and cooling
- 2590mm ceiling height to ground floor
- Quality flooring throughout
- Double glazing to windows
- LED Downlights
- Tiled splashback to Kitchen

CONTACT Paul Amatore 0459 904 111
ardenhomes.com.au



The advertised package price shown includes the \$20k discount from Arden Homes. This lot is eligible for the "Villawood Pays Your Builder Deposit up to \$25,000" promotion. Arden Homes will provide a construction contract for the house and separately the owners will enter into a contract to purchase land directly from the landowner. This advertised offer is subject to availability, statutory approval and a successful settled land contract. Arden Homes reserves the right to change prices or inclusions advertised without notice. For more detailed home pricing, including details about the standard inclusions for the house and optional upgrades and variations, please talk to one of our consultants. Images shown in this brochure may depict upgraded fixtures, finishes and features including items not supplied by Arden Homes such as alfresco decking, internal and external fireplaces, window and house furnishings and landscaping. *For details on the "Live Smarter & Save" and "Villawood Pays Your Builder Deposit up to \$25,000" promotions, visit <https://ardenhomes.com.au/terms-and-conditions/>. CDB-U 48276 and no part may be reproduced or copied without written consent. 21/6/2024