



**CARLISLE
HOMES**

**Flooring
from \$4,999***

*T&C's apply

fixed price

\$929,700*

Images for illustrative purposes only & may depict upgrade options available at additional charges such as lighting, window furnishings, timber look garage door & timber windows. Pricing also excludes features not supplied by Carlisle, inc fencing, landscaping, letterbox, decking & driveway. Façade details inc entry door, window sizes & placements may vary between house types & sizes. Refer to working drawings for specific locations and sizes.

Live Like A Star Inclusions**

Build your dream family home!

Includes a huge list of standard inclusions

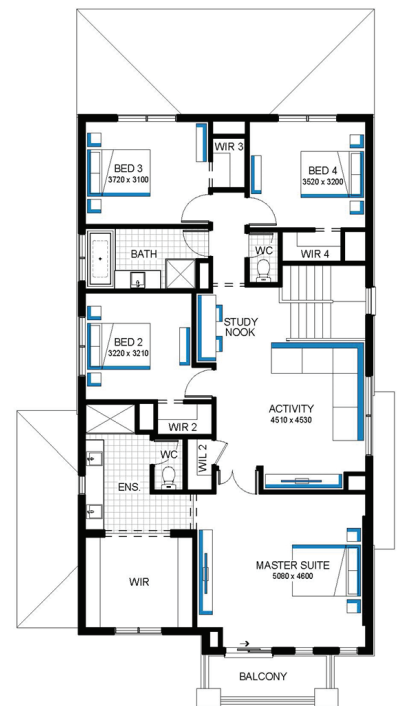
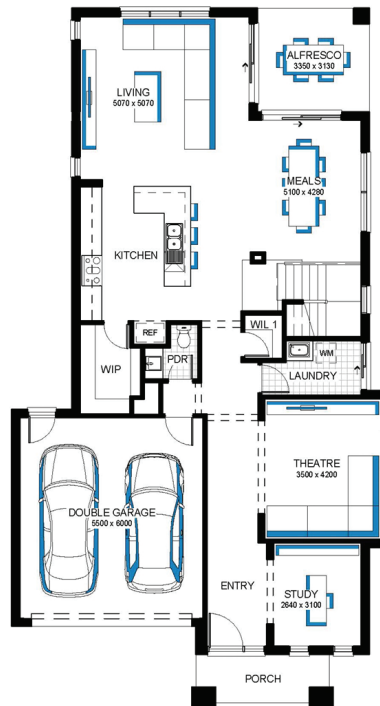
Plus 'Live Like a Star' with our luxury promotional inclusions**

- ✓ Fixed price site costs and connections
- ✓ Developer and council requirements
- ✓ 20mm Caesarstone to kitchen benchtop
- ✓ Fisher & Paykel kitchen appliances
- ✓ Clear glass splashback or tiles to kitchen
- ✓ Opulent bathroom fit-out
- ✓ 20mm Caesarstone to bathroom and ensuite(s) benchtops
- ✓ Laundry fit-out
- ✓ Double glazing to windows
- ✓ Feature staircase balustrade
- ✓ LED lighting
- ✓ Upgraded H-Class slab
- ✓ Entertainer door
- ✓ \$5,000 off fully rendered Hebel facades*
- ✓ 7 star energy rating

Illawarra Grand 36 MK2, Bentley 2 Façade



Lot 1942 (350m²) Alamora, TARNEIT
Lot Orientation: SOUTH



FOR ENQUIRIES CONTACT:

Richard Culph & Yogesh Malhotra 0412779870 or 0430800052 | w: carlislehomes.com.au

Open 7 days a week 11am-5pm

11 -17 Isola Mews TARNEIT 3029

Inspire
CONTEMPORARY LIVING

ALAMORA
TARNEIT

*Fixed Price current as of 28/06/2024. *Pricing based on developer engineering plans & plan of subdivision. Hebel homes may be smaller than dimensions shown on the floorplan due the external wall thickness, see working drawings for Hebel home dimensions. Confirm land prices and availability prior to purchase. Community Infrastructure Levy & Asset Protection not included in pricing and must be arranged directly by client with developer (where applicable). Subject to developer & council approval. Package Price does not include any costs associated with Developer's Corner Façade treatment requirements (which will be priced by Carlisle Homes by way of Post Contract Variation), stamp duty, government, legal or bank charges. Alterations may incur additional charges. Carlisle reserves the right to withdraw or amend pricing, inclusions and promo without notice. Bushfire (BAL) requirements will be credited back to the client if Carlisle Homes receives confirmation that the house is not being constructed in a BAL designated area. This cannot be confirmed until site survey and property information from relevant authorities is received. **Live Like A Star Promotion applies to new quotes and initial deposits on Carlisle's Inspire homes from 1 May 2024, and is not available in conjunction with any other offers. LED downlights will be located in electrical appointment. Double Glazing excludes entertainer door. *Hebel discount taken off full retail price. Images are for illustrative purposes only and may depict upgrade options available. Carlisle reserves the right to withdraw or change pricing, inclusions or promotion without notice. Speak to a Sales Consultant for further details or visit carlislehomes.com.au/disclaimer. Registered Building Practitioner CDB-U 50143.

*Your choice of Timber-look laminate (Categories 1 and 2) or Floor Tiles (Category 1) or Carpet (Carlisle Classic Range). \$4,999 for single storey homes, \$6,999 for double storey homes. For further information, speak to your Sales Consultant.