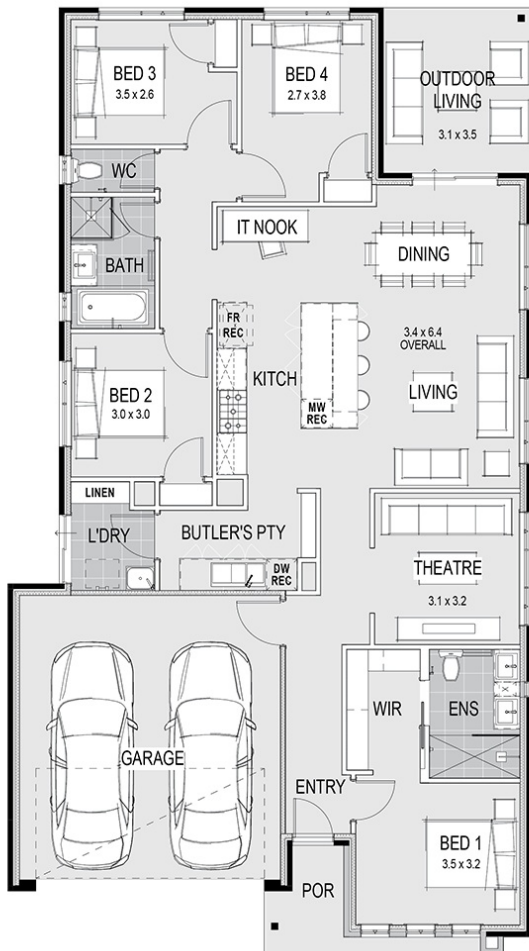




### House Plan:



### LOT #1449

Alamora

Address: Kaveri Street, Tarneit, 3029



440 m<sup>2</sup>

## Amelia 21 - Melbourne - Classic Special

Package Price From

4 2 2 21 sq

**\$755,890\***

### About package:

Including our \$30,000 DESIGNER KITCHEN:

- Huge 1200mm Wide Island Bench with breakfast bar
- Stone Benchtops
- European High Gloss Cabinetry
- European High Gloss Pantry
- Lift up overhead Cupboards
- Extensive Drawers
- 900mm Freestanding Stove
- Integrated Rangehood
- Microwave recess with pot drawer
- Dishwasher recess
- Integrated cutlery drawer

Plus these Promotions Inclusions for FREE:

- Timber Laminate Flooring & Loop Pile Carpet
- 2590mm high ceilings
- Category 1 Upgraded Façade
- Double Vanity & Double Shower to ensuite\*
- Luxe Rainhead Dual Combo showerhead
- Stone Benchtop to Ensuite & Bathroom
- Double Door Entry to master bedroom\*

Plus:

- Lifetime structural warranty
- Fixed site costs
- 12 month fixed pricing

### ENQUIRE NOW:

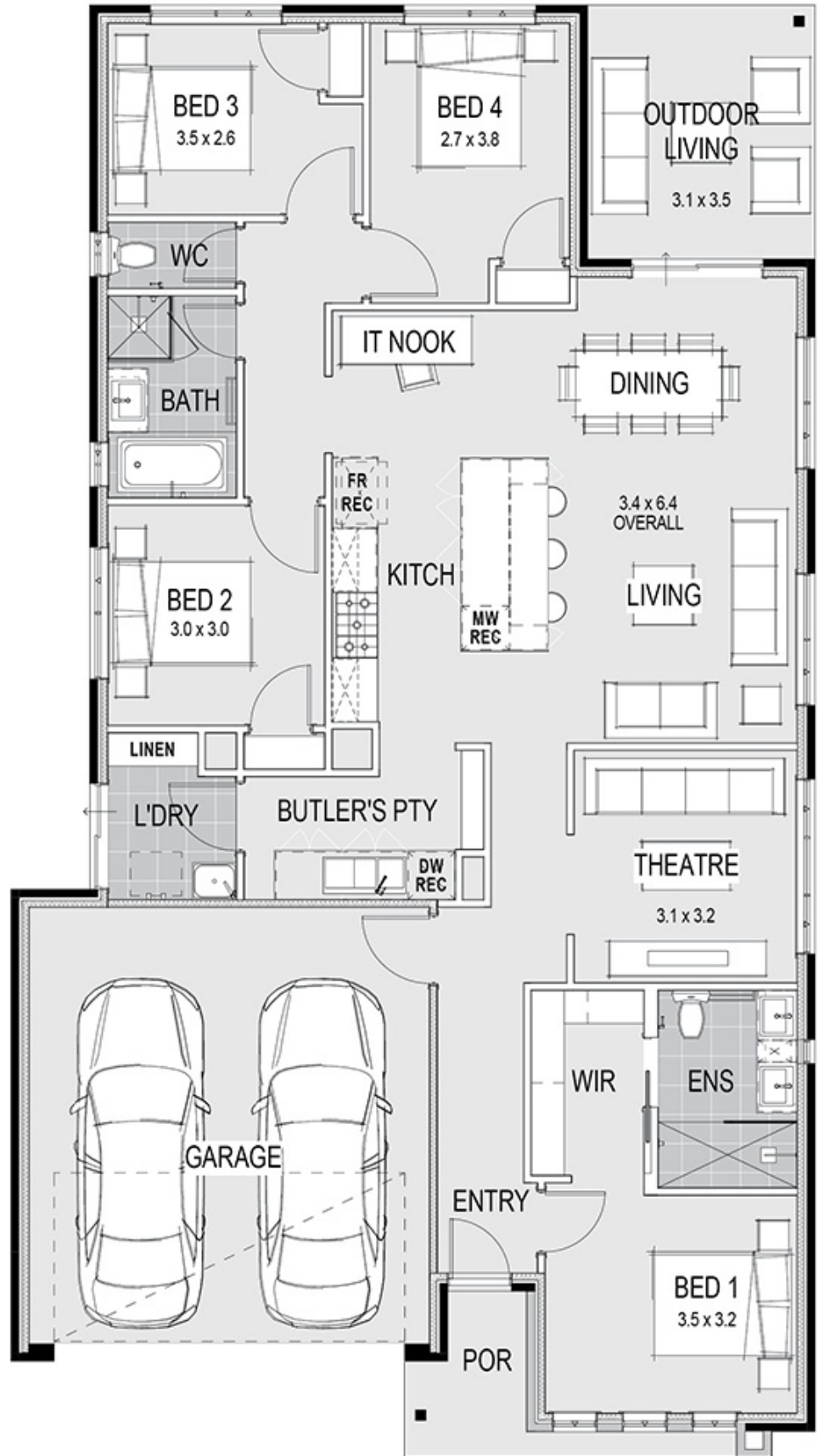
Sumit Sondhi • P: 0430436159 • E: [sumit.sondhi@homegroup.com.au](mailto:sumit.sondhi@homegroup.com.au)

### House Features:

- ✓ Classic Special Promo (25sq below) - Evaporative Cooling, Cat 2 façade e/o Cat 1, 2740mm high ceilings, 2340mm high internal redicote doors, Wide front entry door, Shower Niche to Ensuite, LED's downlights (1 per room), 450x450mm main living area tiles
- ✓ NBN connection, Council Charges
- ✓ Site Costs

### Estate Features:

- ✓ Tarneit Rise Primary School
- ✓ Tarneit Central Shopping Centre
- ✓ Tarneit Station



### ENQUIRE NOW:

Sumit Sondhi • P: 0430436159 • E: [sumit.sondhi@homegroup.com.au](mailto:sumit.sondhi@homegroup.com.au)