

SIMONDS
BUILDING HOMES SINCE 1949



**FIXED
GUARANTEE
PRICE**

Journey INTO STYLE | 2021
**EMBARK
UPGRADES**

HOME AND LAND

Images shown are for illustrative purposes only and may not represent the final product such as lighting, window furnishings, timber look garage door & timber windows. Façade details including entry door and window sizing may vary between house types. Pricing also excludes features such as fencing, landscaping, letterbox, decking, driveway and any notable features of the façade. Please speak with your sales consultant for further details.

LOT 322, ARBOR ESTATE, OFFICER (449M2)

FLOOR PLAN: HARTZ 23_217
FACADE: THORSBOURNE

FIXED PRICE

\$724,843

FIRST HOME OWNERS PRICE \$714,843

4 2 2 2 22sq

ADD A TOUCH OF LUXURY TO YOUR HOME TODAY & SAVE!

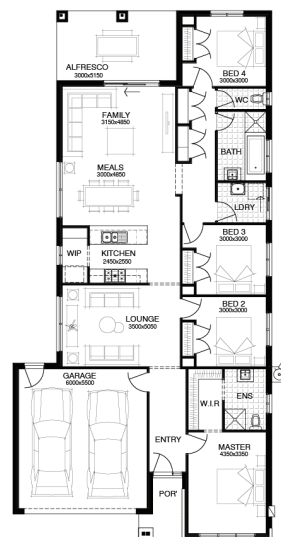


Journey
INTO STYLE | 2021

SAVE ON
LUXURY

PACKAGE INCLUSIONS:

- ▼ DEVELOPER & COUNCIL REQS
- ▼ FLOORING THROUGHOUT
- ▼ 20MM CAESARSTONE BENCHTOP TO KITCHEN
- ▼ OVERHEAD CUPBOARDS TO KITCHEN
- ▼ 20 DOWNLIGHTS
- ▼ BRICKWORK OVER WINDOWS
- ▼ COLOURED CONCRETE DRIVEWAY UP TO 40M2
- ▼ REMOTE TO GARAGE DOOR
- ▼ NBN PROVISIONS (EXCLUDES HUB)
- ▼ TOWEL RAILS & TOILET ROLL HOLDERS



For enquiries please contact:

Tom David
0430744747
Simonds.com.au

Metro East

VIC
tom.david@simonds.com.au



All Fixed Price Home and Land packages are subject to Developer and Council approval and is based on Simonds standard floor plan with preferred siting (without alterations). Package Price does not include stamp duty, government, legal or bank charges. Community Infrastructure Levy and Asset Protection Permit are not included in pricing and is to be arranged by the client directly with the Developer (if applicable). Any alterations may incur additional charges. Confirm land price and availability prior to purchase. Simonds reserves the right to withdraw or amend pricing, inclusions and promotion at any time without notice. Please refer to the terms and conditions at www.simonds.com.au/terms-and-conditions. This package applies to VIC Range range only. Please speak with your sales consultant for further details. Pricing is current at 09/09/2021.

SIMONDS
BUILDING HOMES SINCE 1949



Journey INTO STYLE | 2021
**EMBARK
UPGRADES**

HOME AND LAND

Images shown are for illustrative purposes only and may not represent the final product such as lighting, window furnishings, timber look garage door & timber windows. Façade details including entry door and window sizing may vary between house types. Pricing also excludes features such as fencing, landscaping, letterbox, decking, driveway and any notable features of the façade. Please speak with your sales consultant for further details.

LOT 322, ARBOR ESTATE, OFFICER (449M2)

FLOOR PLAN: WELFORD 25_232
FACADE: FRASER

FIXED PRICE

\$729,550

FIRST HOME OWNERS PRICE \$719,550

4 2 2 2 25sq

ADD A TOUCH OF LUXURY TO YOUR HOME TODAY & SAVE!



Journey
INTO STYLE | 2021
SAVE ON
LUXURY

PACKAGE INCLUSIONS:

- ▼ DEVELOPER & COUNCIL REQS
- ▼ FLOORING THROUGHOUT
- ▼ 20MM CAESARSTONE BENCHTOP TO KITCHEN
- ▼ OVERHEAD CUPBOARDS TO KITCHEN
- ▼ 20 DOWNLIGHTS
- ▼ BRICKWORK OVER WINDOWS
- ▼ COLOURED CONCRETE DRIVEWAY UP TO 40M2
- ▼ REMOTE TO GARAGE DOOR
- ▼ NBN PROVISIONS (EXCLUDES HUB)
- ▼ TOWEL RAILS & TOILET ROLL HOLDERS



For enquiries please contact:

Tom David
0430744747
Simonds.com.au

Metro East

VIC
tom.david@simonds.com.au



All Fixed Price Home and Land packages are subject to Developer and Council approval and is based on Simonds standard floor plan with preferred siting (without alterations). Package Price does not include stamp duty, government, legal or bank charges. Community Infrastructure Levy and Asset Protection Permit are not included in pricing and is to be arranged by the client directly with the Developer (if applicable). Any alterations may incur additional charges. Confirm land price and availability prior to purchase. Simonds reserves the right to withdraw or amend pricing, inclusions and promotion at any time without notice. Please refer to the terms and conditions at www.simonds.com.au/terms-and-conditions. This package applies to VIC Range range only. Please speak with your sales consultant for further details. Pricing is current at 09/09/2021.

SIMONDS
BUILDING HOMES SINCE 1949



FIXED
GUARANTEE
PRICE

Journey INTO STYLE | 2021
EMBARK
UPGRADES

HOME AND LAND

Images shown are for illustrative purposes only and may not represent the final product such as lighting, window furnishings, timber look garage door & timber windows. Facade details including entry door and window sizing may vary between house types. Pricing also excludes features such as fencing, landscaping, letterbox, decking, driveway and any notable features of the facade. Please speak with your sales consultant for further details.

LOT 322, ARBOR ESTATE, OFFICER (449M2)

FLOOR PLAN: CONWAY 25_239
FACADE: THORSBOURNE

FIXED PRICE

\$746,112

FIRST HOME OWNERS PRICE \$736,112

4 2 2 4 26sq

ADD A TOUCH OF LUXURY TO YOUR HOME TODAY & SAVE!



Journey
INTO STYLE | 2021

SAVE ON
LUXURY

PACKAGE INCLUSIONS:

- ▼ DEVELOPER & COUNCIL REQS
- ▼ FLOORING THROUGHOUT
- ▼ 20MM CAESARSTONE BENCHTOP TO KITCHEN
- ▼ OVERHEAD CUPBOARDS TO KITCHEN
- ▼ 20 DOWNLIGHTS
- ▼ BRICKWORK OVER WINDOWS
- ▼ COLOURED CONCRETE DRIVEWAY UP TO 40M2
- ▼ REMOTE TO GARAGE DOOR
- ▼ NBN PROVISIONS (EXCLUDES HUB)
- ▼ TOWEL RAILS & TOILET ROLL HOLDERS



For enquiries please contact:

Tom David
0430744747
Simonds.com.au

Metro East

VIC
tom.david@simonds.com.au



All Fixed Price Home and Land packages are subject to Developer and Council approval and is based on Simonds standard floor plan with preferred siting (without alterations). Package Price does not include stamp duty, government, legal or bank charges. Community Infrastructure Levy and Asset Protection Permit are not included in pricing and is to be arranged by the client directly with the Developer (if applicable). Any alterations may incur additional charges. Confirm land price and availability prior to purchase. Simonds reserves the right to withdraw or amend pricing, inclusions and promotion at any time without notice. Please refer to the terms and conditions at www.simonds.com.au/terms-and-conditions. This package applies to VIC Range range only. Please speak with your sales consultant for further details. Pricing is current at 09/09/2021.



Journey INTO STYLE | 2021
**EMBARK
UPGRADES**

HOME AND LAND

Images shown are for illustrative purposes only and may not represent the final product such as lighting, window furnishings, timber look garage door & timber windows. Facade details including entry door and window sizing may vary between house types. Pricing also excludes features such as fencing, landscaping, letterbox, decking, driveway and any notable features of the facade. Please speak with your sales consultant for further details.

LOT 322, ARBOR ESTATE, OFFICER (449M2)

FLOOR PLAN: MINERVA 23_219
FACADE: YURREBILLA

FIXED PRICE

\$733,325

FIRST HOME OWNERS PRICE \$723,325

4 2 2 2 24sq

ADD A TOUCH OF LUXURY TO YOUR HOME TODAY & SAVE!

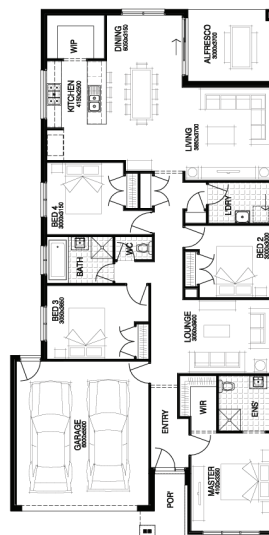


Journey
INTO STYLE | 2021

SAVE ON
LUXURY

PACKAGE INCLUSIONS:

- ▼ DEVELOPER & COUNCIL REQS
- ▼ FLOORING THROUGHOUT
- ▼ 20MM CAESARSTONE BENCHTOP TO KITCHEN
- ▼ OVERHEAD CUPBOARDS TO KITCHEN
- ▼ 20 DOWNLIGHTS
- ▼ BRICKWORK OVER WINDOWS
- ▼ COLOURED CONCRETE DRIVEWAY UP TO 40M2
- ▼ REMOTE TO GARAGE DOOR
- ▼ NBN PROVISIONS (EXCLUDES HUB)
- ▼ TOWEL RAILS & TOILET ROLL HOLDERS



For enquiries please contact:

Tom David
0430744747
Simonds.com.au

Metro East

VIC
tom.david@simonds.com.au



SIMONDS
BUILDING HOMES SINCE 1949



Journey INTO STYLE | 2021
**EMBARK
UPGRADES**

HOME AND LAND

Images shown are for illustrative purposes only and may not represent the final product such as lighting, window furnishings, timber look garage door & timber windows. Facade details including entry door and window sizing may vary between house types. Pricing also excludes features such as fencing, landscaping, letterbox, decking, driveway and any notable features of the facade. Please speak with your sales consultant for further details.

LOT 322, ARBOR ESTATE, OFFICER (449M2)

FLOOR PLAN: FITZGERALD 25_237
FACADE: DAVEY

FIXED PRICE

\$736,074

FIRST HOME OWNERS PRICE \$726,074

4 2 2 2 25sq

ADD A TOUCH OF LUXURY TO YOUR HOME TODAY & SAVE!



Journey
INTO STYLE | 2021

SAVE ON
LUXURY

PACKAGE INCLUSIONS:

- ▼ DEVELOPER & COUNCIL REQS
- ▼ FLOORING THROUGHOUT
- ▼ 20MM CAESARSTONE BENCHTOP TO KITCHEN
- ▼ OVERHEAD CUPBOARDS TO KITCHEN
- ▼ 20 DOWNLIGHTS
- ▼ BRICKWORK OVER WINDOWS
- ▼ COLOURED CONCRETE DRIVEWAY UP TO 40M2
- ▼ REMOTE TO GARAGE DOOR
- ▼ NBN PROVISIONS (EXCLUDES HUB)
- ▼ TOWEL RAILS & TOILET ROLL HOLDERS



For enquiries please contact:

Tom David
0430744747
Simonds.com.au

Metro East

VIC
tom.david@simonds.com.au



All Fixed Price Home and Land packages are subject to Developer and Council approval and is based on Simonds standard floor plan with preferred siting (without alterations). Package Price does not include stamp duty, government, legal or bank charges. Community Infrastructure Levy and Asset Protection Permit are not included in pricing and is to be arranged by the client directly with the Developer (if applicable). Any alterations may incur additional charges. Confirm land price and availability prior to purchase. Simonds reserves the right to withdraw or amend pricing, inclusions and promotion at any time without notice. Please refer to the terms and conditions at www.simonds.com.au/terms-and-conditions. This package applies to VIC Range range only. Please speak with your sales consultant for further details. Pricing is current at 09/09/2021.



Journey INTO STYLE | 2021
**EMBARK
UPGRADES**

HOME AND LAND

Images shown are for illustrative purposes only and may not represent the final product such as lighting, window furnishings, timber look garage door & timber windows. Facade details including entry door and window sizing may vary between house types. Pricing also excludes features such as fencing, landscaping, letterbox, decking, driveway and any notable features of the facade. Please speak with your sales consultant for further details.

LOT 322, ARBOR ESTATE, OFFICER (449M2)

FLOOR PLAN: ALTON 24_223
FACADE: FRASER

FIXED PRICE

\$727,753

FIRST HOME OWNERS PRICE \$717,753

4 2 2 2 24sq

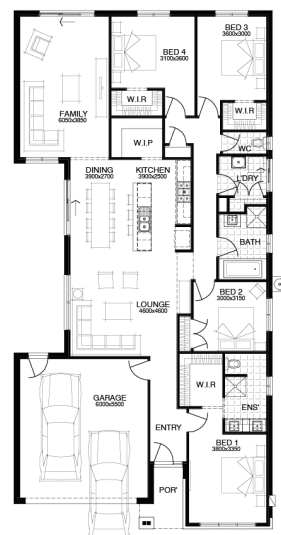
ADD A TOUCH OF LUXURY TO YOUR HOME TODAY & SAVE!



Journey
INTO STYLE | 2021
SAVE ON LUXURY

PACKAGE INCLUSIONS:

- ▼ DEVELOPER & COUNCIL REQS
- ▼ FLOORING THROUGHOUT
- ▼ 20MM CAESARSTONE BENCHTOP TO KITCHEN
- ▼ OVERHEAD CUPBOARDS TO KITCHEN
- ▼ 20 DOWNLIGHTS
- ▼ BRICKWORK OVER WINDOWS
- ▼ COLOURED CONCRETE DRIVEWAY UP TO 40M2
- ▼ REMOTE TO GARAGE DOOR
- ▼ NBN PROVISIONS (EXCLUDES HUB)
- ▼ TOWEL RAILS & TOILET ROLL HOLDERS



For enquiries please contact:

Tom David
0430744747
Simonds.com.au

Metro East

VIC
tom.david@simonds.com.au

