



Norfolk 28

4 2 2

Address
Lot 427, Arbor, Officer, 3809

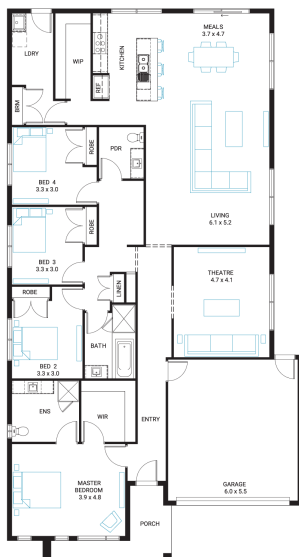
Facade	Lot Width	Lot size	House size
Central	14	465 m ²	262 m ²

Available Structural Options

Grand Ensuite, Butler's Pantry, U-Shape Kitchen, L-Shape Kitchen, Deluxe Kitchen, Office, Outdoor Living, Grand Outdoor Living, Rear Flip,

Your Inclusions

- Double glazing to all fully glazed aluminium external windows and sliding doors.
- 'Fisher and Paykel' stainless steel appliances (900mm)
- Engineered stone benchtops with 20mm edge profile to Kitchen.
- Laminate overhead cupboards with concealed rangehood to Kitchen
- Towel rails and toilet roll holders to wet areas
- Tiled shower bases to Bathroom and Ensuite
- Built in laundry laminate unit with inset trough
- Flooring throughout (tiles and carpet)
- Bristle Classic low profile roof tiles
- 'Colorbond' sectional overhead door with automated lifter and remote controls
- Insect Screens with fibreglass mesh to all openable windows.
- Gas ducted heating with ceiling outlets to Bedrooms and all Living areas.
- 'Dulux' Wash and Wear 3 Coat paint system to internal walls.
- 25 Year Structural Warranty



Package Enquiries
Abbey Cole - 0448 421 941,
abbey@beachwood-homes.com.au

