



ANAMBAH RISE



**TURN
KEY
PACKAGE**

*T&Cs apply

OATLAND 24 | ECHO FACADE

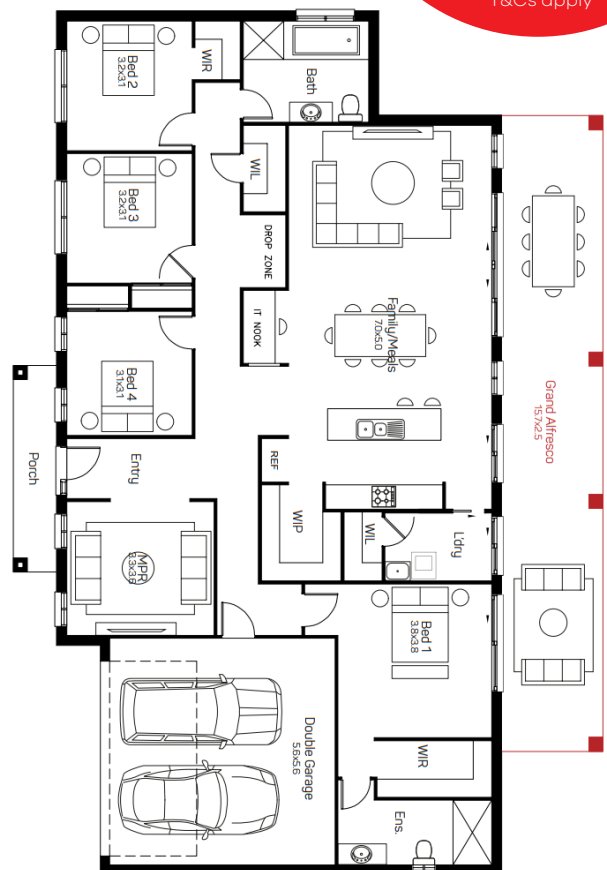
Lot 315 \$1,065,000

 4  2  2 1009m²

LAND REGISTRATION 3RD QUATER 2024

Package includes:

- Quality Tiles Carpet
- Blinds and Flyscreens to windows
- Insulation to walls and ceiling (excluding garage)
- 900mm Stainless Steel Oven, Cook top and Range hood. Stainless Steel Dishwasher
- 20mm stone bench top to kitchen with Soft close drawers and doors.
- Automatic Garage Doors
- Ducted Air Included
- Solar Bonus
- Driveway, Turf, Letterbox , Site Costs Fencing
- *Current promotional discount already applied



CPG ESTATES

Domaine homes

Terms and conditions apply contact us for more information. Images for illustrative purposes only. Land value included in the package. E&OE. Domaine Homes reserves the right to change the price without notice. Domaine Homes (NSW) Pty Ltd. ABN 19 080 788 969 BL No. 91387C. Prices based on July 2024 Price List.



Oatland 24 1009m² Lot

House Length	21.33m	Total Area m ²	226
House Width	12.07m	Total Area Squares	24

CPG ESTATES

Domaine homes

Terms and conditions apply contact us for more information. Images for illustrative purposes only. Land value included in the package. E&OE. Domaine Homes reserves the right to change the price without notice. Domaine Homes (NSW) Pty Ltd. ABN 19 080 788 969 BL No. 91387C. Prices based on July 2024 Price List.