



# ANAMBAH RISE



**TURN  
KEY  
PACKAGE**

\*T&Cs apply

WASHINGTON 19 | GRACE FACADE

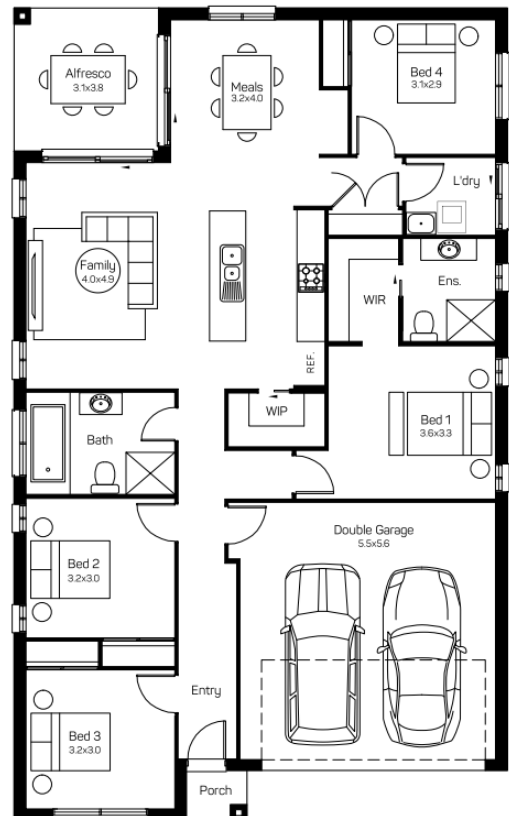
**Lot 321 \$762,000**

 4  2  2 475m<sup>2</sup>

LAND REGISTRATION 3RD QUATER 2024

## Package includes:

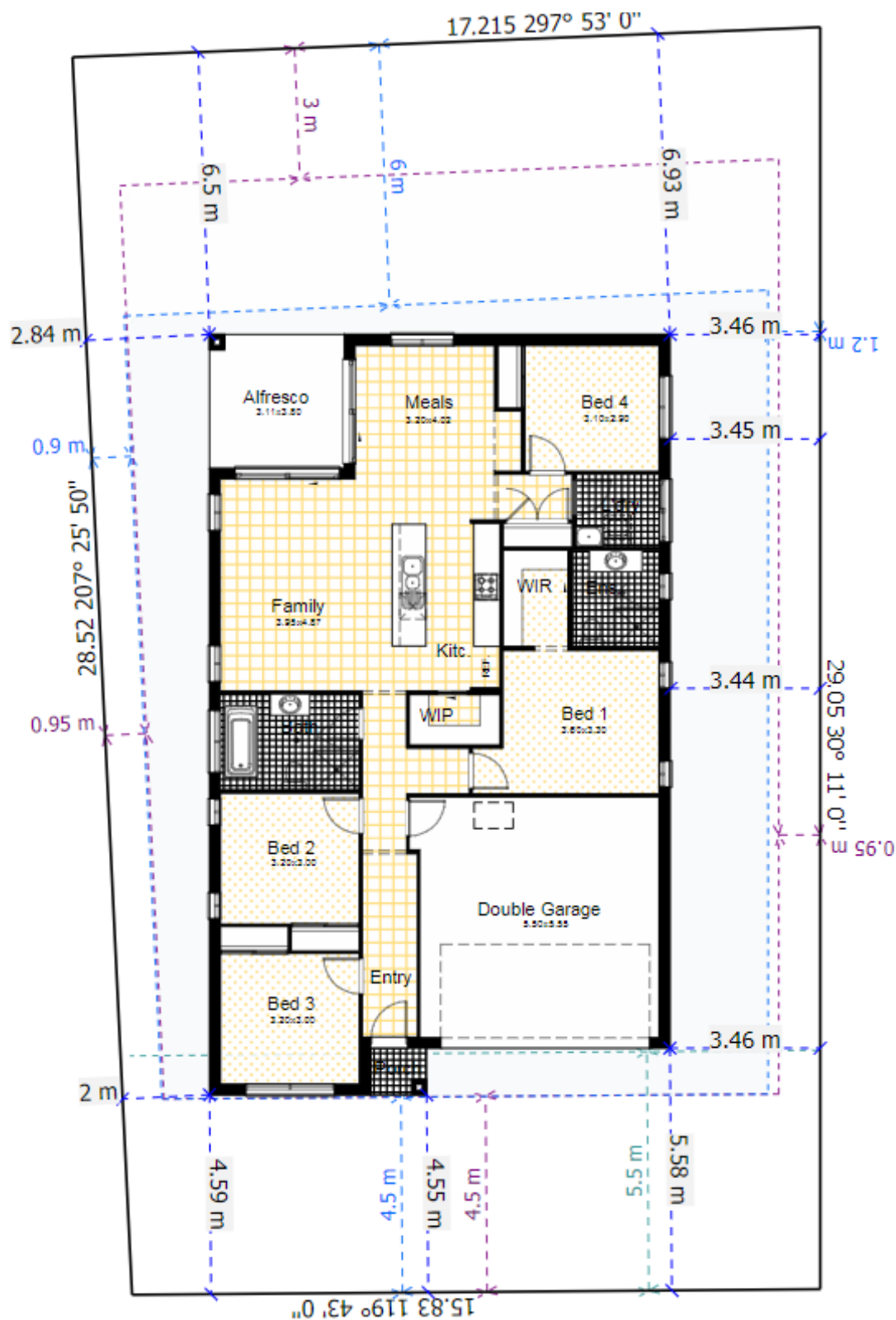
- Quality Tiles Carpet
- Blinds and Flyscreens to windows
- Insulation to walls and ceiling (excluding garage)
- 900mm Stainless Steel Oven, Cook top and Range hood. Stainless Steel Dishwasher
- 20mm stone bench top to kitchen with Soft close drawers and doors.
- Automatic Garage Doors
- Ducted Air Included
- Solar Bonus
- Driveway, Turf, Letterbox , Site Costs Fencing
- \*Current promotional discount already applied



**CPG ESTATES**

**Domaine homes**

Terms and conditions apply contact us for more information. Images for illustrative purposes only. Land value included in the package. E&OE. Domaine Homes reserves the right to change the price without notice. Domaine Homes (NSW) Pty Ltd. ABN 19 080 788 969 BL No. 91387C. Prices based on July 2024 Price List.



## Washinton 19 475m<sup>2</sup> Lot

House Length	17.50m	Total Area m <sup>2</sup>	179
House Width	10.60m	Total Area Squares	19

CPG ESTATES

Domaine homes

Terms and conditions apply contact us for more information. Images for illustrative purposes only. Land value included in the package. E&OE. Domaine Homes reserves the right to change the price without notice. Domaine Homes (NSW) Pty Ltd. ABN 19 080 788 969 BL No. 91387C. Prices based on July 2024 Price List.