



## MALDON 27

# House & Land Package



**\$655,850\***

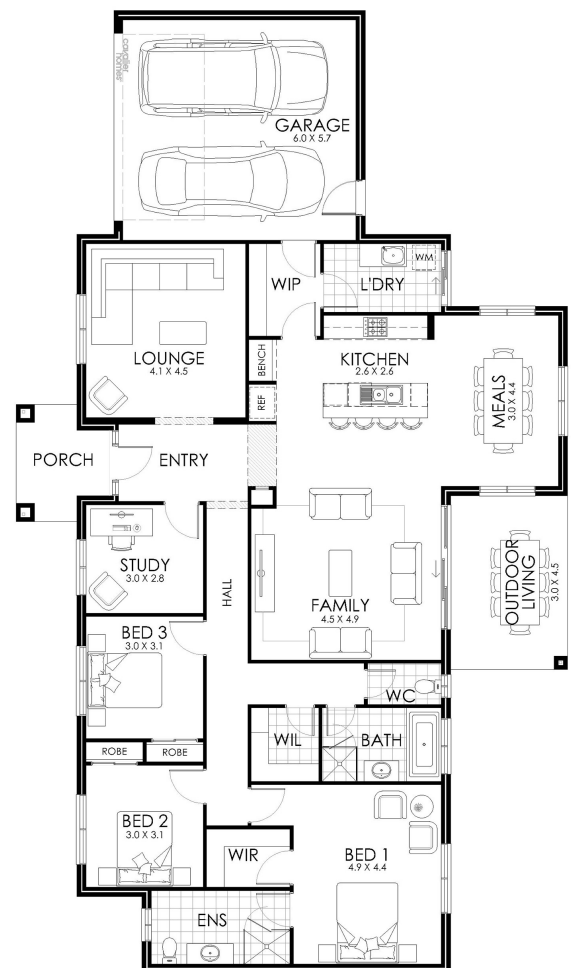
Lot 307 Princes Way Moama

Lot Size: 725m<sup>2</sup>

House Size: 251.61m<sup>2</sup>

List of Inclusions:

- Lifestyle inclusions
- Colorbond steel roof
- Gas Ducted Heating & Evaporative Cooling
- Quality Westinghouse appliances
- Carpet & tiles throughout
- Site Cost allowance
- Quality fittings and fixtures
- Brick over all window/door openings
- Study
- Additional living area



**cavalier  
homes®**  
REAL HOMES.. REAL PEOPLE.

**Find Out More**  
Contact: Vanessa Brewis  
0457 366 230

\*All prices, images, inclusions and plans shown in this document and any Display Home vary throughout Australia and over time and are provided as a guide only. Unless otherwise stated in writing, new home prices do not include furniture, decorator items, driveways, paths, landscaping, swimming pools, letterboxes, fencing, security systems, vacuum systems, telephone, intercom and communication systems, air conditioning, heating systems and or connection fees. All Cavalier Homes designs are copyright. None of the information provided in this brochure forms part of any contract with Cavalier Homes and you should not rely upon any information contained in this brochure in deciding whether to enter into any contract with Cavalier Homes. Please refer to the particulars of your Contract for the specific design and details of any inclusions. Package reference number 9940813685. Cavalier Homes Goulburn Valley is a registered building practitioner number CDB-U 51879 (VIC) 316535C (NSW).