



WINTON 24

House & Land Package



\$607,760*

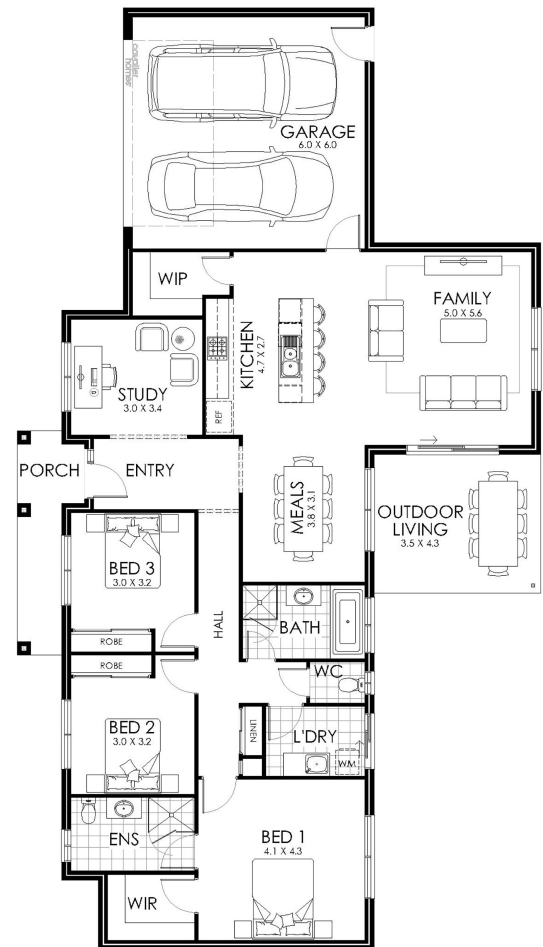
Lot 312 Centennial Street
Moama NSW Australia

Lot Size: 636m²

House Size: 228.60m²

List of Inclusions:

- Lifestyle inclusions
- Site Cost allowance
- Colorbond steel roof
- Gas Ducted Heating & Evaporative Cooling
- Quality Westinghouse appliances
- Carpet & tiles throughout
- Quality fittings and fixtures
- Concrete paving allowance
- Study
- *Pricing includes standard facade only



**cavalier
homes®**
REAL HOMES... REAL PEOPLE

Find Out More
Contact: Vanessa Brewis
0457 366 230

All prices, images, inclusions and plans shown in this document and any Display Home vary throughout Australia and over time and are provided as a guide only. Unless otherwise stated in writing, new home prices do not include furniture, decorator items, driveways, paths, landscaping, swimming pools, letterboxes, fencing, security systems, vacuum systems, telephone, intercom and communication systems, air conditioning, heating systems and or connection fees. All Cavalier Homes designs are copyright. None of the information provided in this brochure forms part of any contract with Cavalier Homes and you should not rely upon any information contained in this brochure in deciding whether to enter into any contract with Cavalier Homes. Please refer to the particulars of your Contract for the specific design and details of any inclusions.