

# HOUSE & LAND

Sanctuary  
RANGE

A NEW PLACE TO CALL HOME



ICE LYN 243

**\$681,900\***



4



2



2

TOTAL (sqsq)	26.14
TOTAL (m <sup>2</sup> )	242.83
WIDTH (m)	12.71
LENGTH (m)	21.33

**LOT 409 MAYFLOWER DR, MOAMA NSW  
2731**

LAND: 625m<sup>2</sup> ESTATE: MAIDENS GREEN

## Features & Inclusions:

Vinyl planks, carpet and tiles throughout

Concrete driveway allowance

20mm Stone Benchtops

2700mm Ceiling Height

Remote Garage Door

LED Downlights

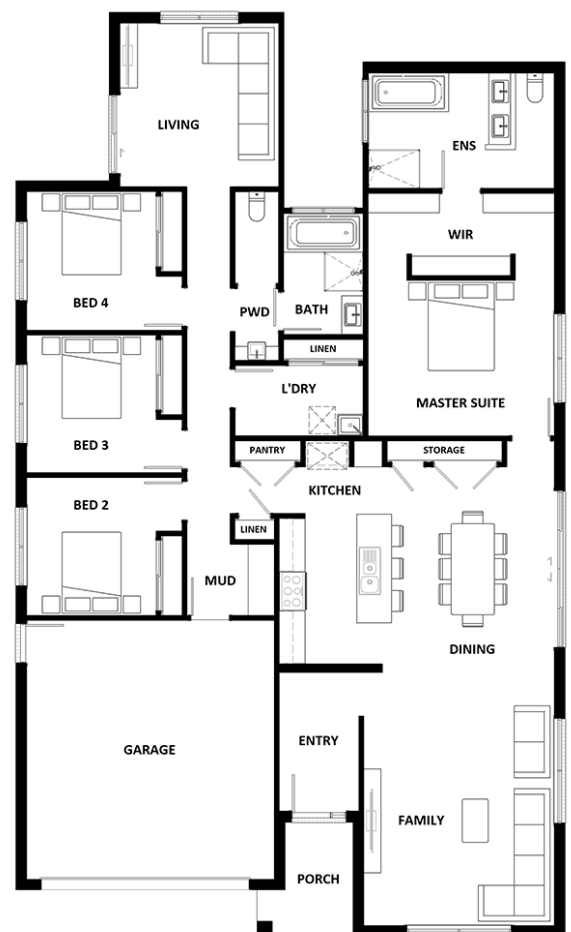
Clothesline

For more information contact:

**Troy Denbrok 0428 818 099**

**troy@denbrok.com.au**

Builder Licence: DB-U14009, 371816C



\*Dimensions, photographs, floor plans and facade images are approximate and for illustrative purposes only. They are not drawn to scale. The dimensions provided of "width" and "length" are the actual dimensions of the completed house including alfresco areas (where applicable). It is the home owner's responsibility to ensure that all applicable council regulations and estate requirements are met. Subject to land availability, pricing and site costs unless advertised as a 'fixed price package'. Driveway size based on builder's preferred siting. Check with your local builder for builder's standard range and inclusions. Photographs may include optional features or items that are not supplied by Hotondo Homes. Hotondo Homes reserves the right to change plans, specifications, materials and suppliers without notice. For more information visit your local builder or hotondo.com.au.

