



HOUSE & LAND

\$647,500*

MAIDENS GREEN – MOAMA

Lot 302 Princes Way
Moama NSW 2731

4 **2** **2** **2** **1**

Ekati 25 Sahna Façade
(Aspirations Series 3)

Home size: 25.11sq Land size: 790.00m²

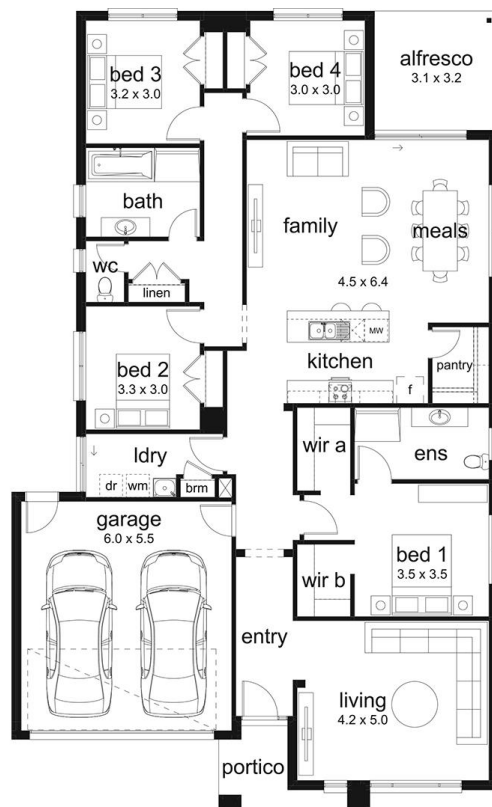
- ✓ BAL 12.5 inclusions
- ✓ Site Costs Allowance
- ✓ 2580mm ceiling height to ground floor
- ✓ 3 Coat Paint System
- ✓ Remote control to garage door
- ✓ Flyscreens
- ✓ 900mm Stainless Steel Appliances
- ✓ Technika dishwasher
- ✓ Gas ducted heating
- ✓ Evaporative cooling
- ✓ Floor Coverings
- ✓ 35 m2 of Concrete Drive and Paving
- ✓ Current Promotion

ASK US ABOUT

**VILLAWOOD PAYS
YOUR BUILDER
DEPOSIT** **UP TO \$25K**

Conditions apply. Limited to 1% of the building contract price and up to \$25,000.

villawood properties



**MAIDENS
GREEN**
MOAMA

Go to **dennisfamily.com.au** or call
1800 DENNIS for more information.

Sharon Stratton 0428394037

Reference HL0048314