

Price includes standard floorplan with STANDARD STRUCTURE WITH CEDAR CLAD facade.



Artist impression. Furniture, landscaping, driveway, window furnishing and porch decking is not provided by Urbanedge Homes.

FIRST HOME BUYERS PRICE \$911,666 ^

## FIXED PRICE HOUSE & LAND

### Larne 4-40

Lot 1217, Palmetto Ave.  
LAND SIZE: 448.00m<sup>2</sup>

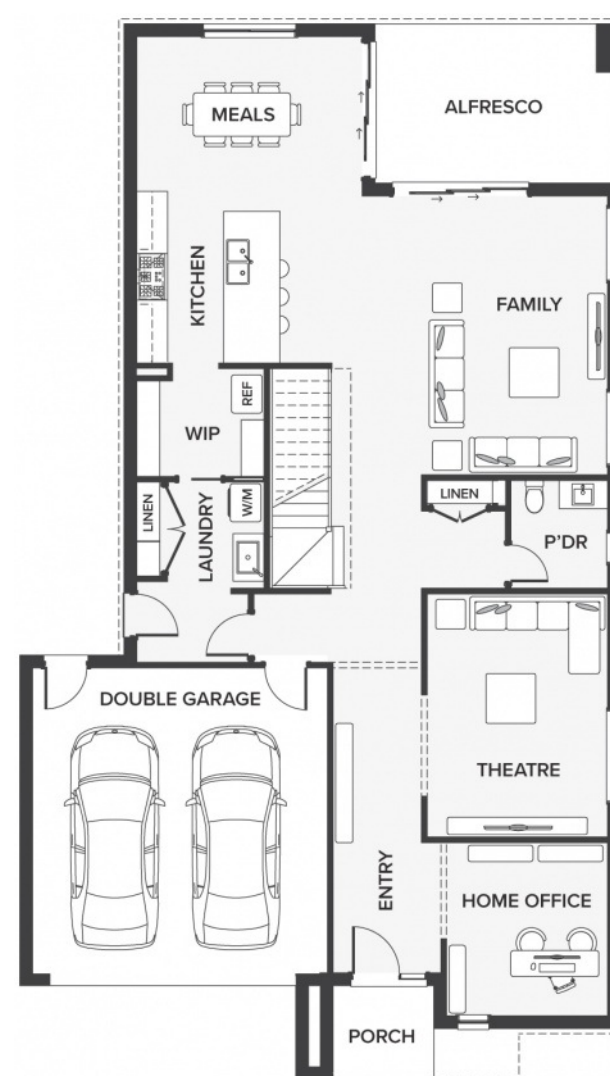
berwick  
waters::

4 2 2

369.18m<sup>2</sup> | 39.74 sqs

- ▲ Architecturally inspired fully rendered facade
- ▲ Brickwork or rendered foam above all ground floor windows and sliding doors
- ▲ Smeg Appliances to Kitchen
- ▲ Floor coverings throughout
- ▲ Silestone benchtops to Kitchen and Ensuite(s) Bathroom
- ▲ Base Cabinetry to Laundry
- ▲ and much more ...

edge  
inclusions



Please Contact  
Liam Whiticker  
0406 866 448  
liamw@urbanedgehomes.com.au

LuxuryRedefined  
urbanedgehomes.com.au