

**SIMONDS**  
BUILDING HOMES SINCE 1949



**RISE UPGRADES**  
**\$12,500\***  
Plus  
**FLOORING PACK 'A'**

# HOME AND LAND

Images shown are for illustrative purposes only and may not represent the final product such as lighting, window furnishings, timber look garage door & timber windows. Façade details including entry door and window sizing may vary between house types. Pricing also excludes features such as fencing, landscaping, letterbox, decking, driveway and any notable features of the façade. Please speak with your sales consultant for further details.

LOT 1325, BERWICK WATERS ESTATE, CLYDE NORTH (480M2)

**FLOOR PLAN: WOODHAVEN 32\_299**  
**FACADE: SARATOGA**

**FROM\***  
**\$1,006,150**

5 🚗 3 🚿 2 🚗 3 🚗 32sq 📏

**RISE**  
UPGRADES

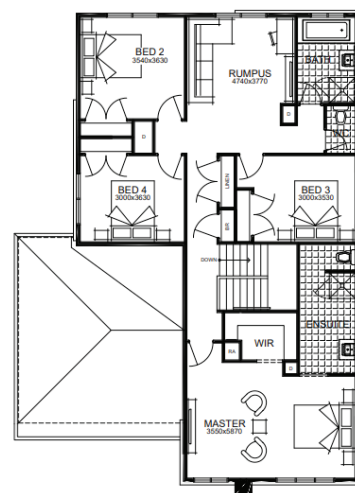
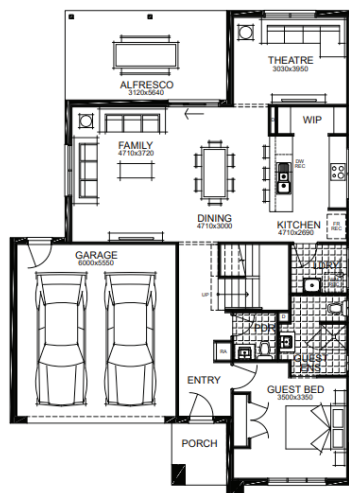


**RISE ABOVE**  
**THE REST**

**GET UP TO**  
**\$44,000\***  
WORTH OF INCLUSIONS  
FOR JUST \$15,000\*

## PACKAGE INCLUSIONS:

- ▼ DEVELOPER & COUNCIL REQs
- ▼ FLOORING THROUGHOUT
- ▼ 20MM CAESARSTONE BENCHTOP TO KITCHEN
- ▼ OVERHEAD CUPBOARDS TO KITCHEN
- ▼ 20 LED DOWNLIGHTS
- ▼ BRICKWORK OVER WINDOWS
- ▼ 900MM APPLIANCES
- ▼ DISHWASHER
- ▼ TOWEL RAILS & TOILET ROLL HOLDERS
- ▼ REMOTE TO GARAGE DOOR



**For enquiries please contact:**

Joanne Azar  
0435992688  
Simonds.com.au

Metro East

VIC  
joanne.azar@simonds.com.au

**berwick**  
**waters::**

\*From pricing is based on standard plan, builders preferred siting, site costs allowance, and is subject to extreme site changes beyond our reasonable control and unknown at the time of print. All packages are subject to Developer and Council approval. Package Price does not include stamp duty, government, legal or bank charges. Community Infrastructure Levy and Asset Protection Permit are not included in pricing and is to be arranged by the client directly with the Developer (if applicable). Any alterations may incur additional charges. Confirm land price and availability prior to purchase. Simonds reserves the right to withdraw or amend pricing, inclusions and promotion at any time without notice. \*Please refer to the terms and conditions at [www.simonds.com.au/terms-and-conditions](http://www.simonds.com.au/terms-and-conditions). This package applies to VIC Metro range only. Please speak with your sales consultant for further details. Pricing is current at 10/02/2022.