

Estate: Berwick Waters - Mondous Island  
Lot: 1310 Palmetto Avenue, Clyde North

# Fairhaven



from  
**\$1,150,811**

LUXURY  
*Built-In*



## Newport 413

Block: 16mW x 32mL House: 11.75mW x 20.64mL



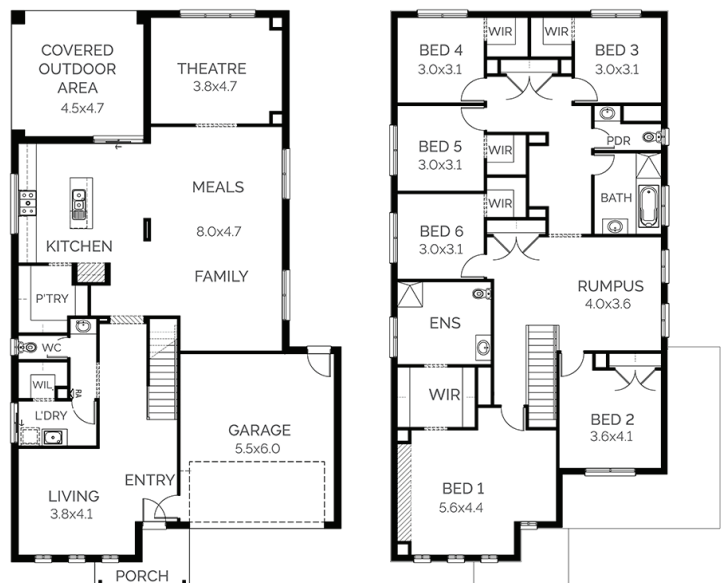
Block Size: 512m<sup>2</sup>

Title Exp: November 2023

House Size: 41.33sq

### Package Includes:

- Fixed site costs
- Developers guidelines
- Up to a H1 slab design
- Choice of facades
- myHAVEN Selection Appointment
- 2590H ceilings to ground floor
- Flyscreens for all openable windows
- Remote control to the garage
- Evaporative Cooling
- Downlight to Entry, Kitchen, Family and Meals
- Tiles or laminate timber flooring to Entry, Kitchen, Family and Meals. Carpet to the remaining areas
- 20mm reconstituted stone benchtop to Kitchen, Ensuite, Bathroom, Laundry and Powder Room (design specific)
- Up to a 1700mm vanity to Ensuite (design specific)
- 900mm Kitchen appliances, including dishwasher
- Up to 1500 tiled shower base to Ensuite (design specific)



M 0415 119 717

E [hday@fairhavenhomes.com.au](mailto:hday@fairhavenhomes.com.au)

[fairhavenhomes.com.au/house-and-land/](https://fairhavenhomes.com.au/house-and-land/)



Images are for illustration purposes only, driveway, landscaping, external lighting, furniture, window furnishings, & porch deck are not included. All pricing is based on our standard inclusions and site start within 6 months for Elegance & 12 months for Simplicity and Bridgewater from the initial deposit date. Siting of the House is at the discretion of the Builder. The Builders reserves the right to withdraw or amend prices, inclusions, & special offers without notice. House & Land sold separately, & pricing may vary due to land availability. Price does not include: not limited to: transfer duty, stamp duty, settlement costs or any other fees associated with the land settlement. It is the Purchaser's responsibility to make independent enquiries into restrictions on the property in relation to MCPs, Developer Guidelines, Covenants, Building Envelopes, POS & Estate Eng. and to confirm land prices & availability before purchasing land. Fairhaven Homes acts as Builder for the sale of the Building only. \*House & Land packages excludes block specific corner treatment & acoustics requirements where applicable & are subject to Developers design panel for final approval & may need to be mirrored or altered to comply. The Purchaser may be required to upgrade façade should a similar façade be built/submitted within proximity & additional cost may apply. For full details please contact one of our New Home Consultants. Fairhaven Homes Pty Ltd. CDB-U 48497. T&C's apply. <https://www.fairhavenhomes.com.au/promotion-terms-and-conditions/> for full T&Cs.