

LUXURY  
*Built-In*

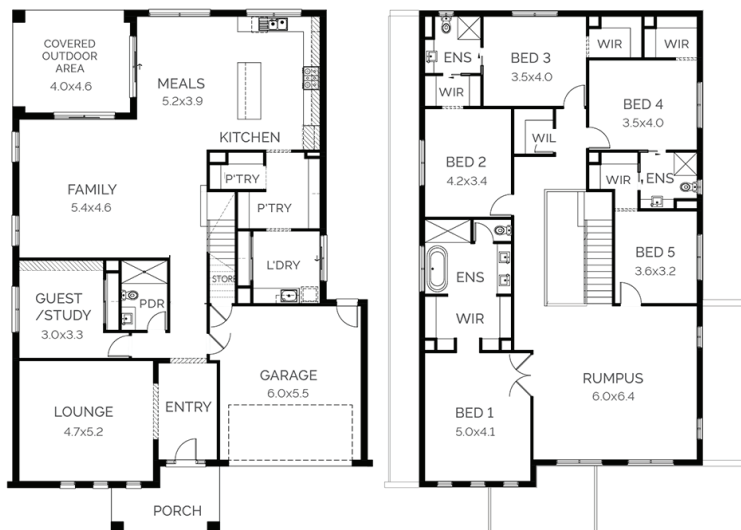


Block: 16mW x 32mL     House: 14.2mW x 20.37mL



House Size: 47.3sq

- Fixed site costs
- Developers guidelines
- Up to a H1 slab design
- Refrigerated add-on cooling
- Motorised sectional overhead garage door
- Floor coverings throughout
- COLORBOND® steel roof
- Square set cornice
- 2590mm ceiling to ground floor
- 40mm reconstituted stone benchtops in kitchen
- 20mm reconstituted stone benchtops to ensuite, bathroom and laundry
- Upright cooker, rangehood and dishwasher Appliances by Electrolux
- Floor to ceiling tiles in bathrooms and toilets
- 6 star energy efficiency rating to all orientations of the home
- Further structural options available



[fairhavenhomes.com.au/house-and-land/](http://fairhavenhomes.com.au/house-and-land/)

e | elegance

Images are for illustration purposes only, driveway, landscaping, external lighting, furniture, window furnishings, & porch deck are not included. All pricing is based on our standard inclusions and site start within 6 months for Elegance & 12 months for Simplicity and Bridgewater from the initial deposit date. Siting of the House is at the discretion of the Builder. The Builders reserves the right to withdraw or amend prices, inclusions, & special offers without notice. House & Land sold separately, & pricing may vary due to land availability. Price does not include, not limited to: transfer duty, stamp duty, settlement costs or any other fees associated with the land settlement. It is the Purchasers responsibility to make independent enquiries into restrictions on the property in relation to MCPs, Developer Guidelines, Covenants, Building Envelopes, POS & Estate Eng. and to confirm land prices & availability before purchasing land. Fairhaven Homes acts as Builder for the sale of the Building only. \*House & Land packages excludes block specific core treatment & acoustics requirements where applicable & are subject to Developers design panel for final approval & may need to be mirrored or altered to comply. The Purchaser may be required to upgrade facade should a similar facade be built/submitted within proximity & additional cost may apply. For full details please contact one of our New Home Consultants. Fairhaven Homes Pty Ltd. CDB-U 48497 T&C's are apply. <https://www.fairhavenhomes.com.au/promotion-terms-and-conditions/> for full T&Cs.