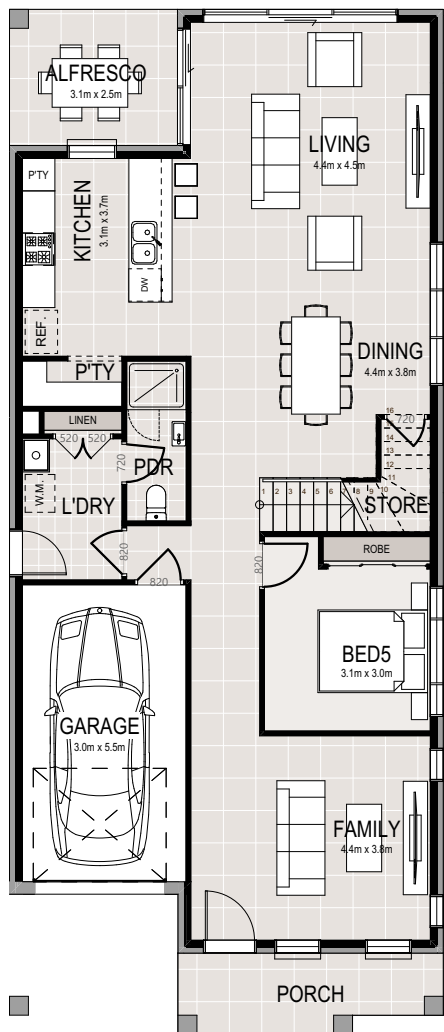
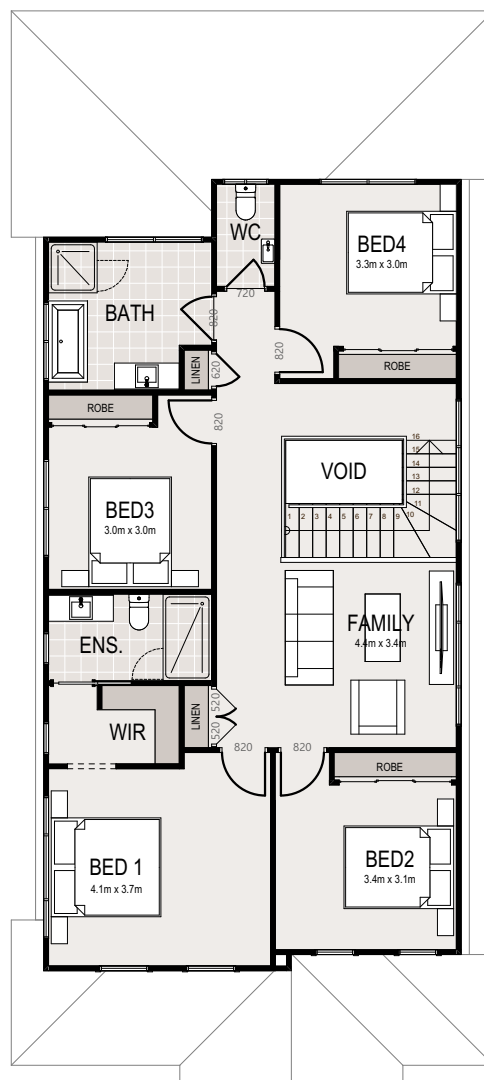




NOTE: Alfresco size and structure is subject to authority approval

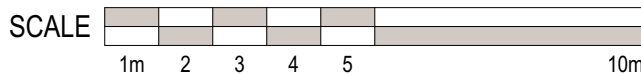


GROUND FLOOR PLAN



FIRST FLOOR PLAN

"Creation Homes NSW Pty Ltd reserves the right to modify features, specifications, plans, and/or prices without obligation. This floor plan is subject to availability, developers design review panel, site conditions, statutory authority requirements & approvals. All dimensions are an approximate only which are subject to statutory authority requirements and approval. Whilst every effort is made to provide accurate information, floor plan is for illustrative purposes and intended to provide a visual guide only. Refer to individual contracts for final details. Details are correct at time of printing and subject to change without notice or obligation. Version 1_29092021"



creationhomes

Creation Homes Pty Ltd
Suite 3, 46 Brookhollow Avenue, Baulkham Hills
NSW 2153
(P) 02 8912 9216 (F) 02 8912 9299

FAULKNER
HAMPTON

© The plan & design of this house is owned by Creation Homes & under the copyright act of 1968 cannot be reproduced in any shape or form without prior written authorisation. Any doing so will be liable for action under the act.

	5	3	1
Ground Floor Living	110.34m ²		
First Floor Living	108.97m ²		
Garage	18.70m ²		
Porch	6.78m ²		
Alfresco	7.84m ²		
Total	252.63m²		
Total Width	8.03m		
Main Dwelling Depth	17.47m		
Total Depth	18.97m		