

**Late 2022  
Registration**



Waterford 27 | Oxford Façade

Facade images and landscaping may vary from this image

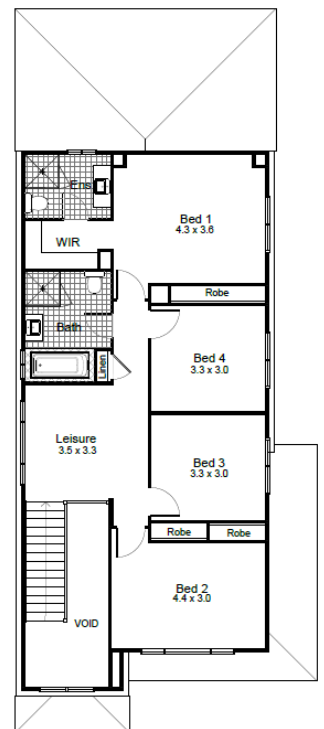
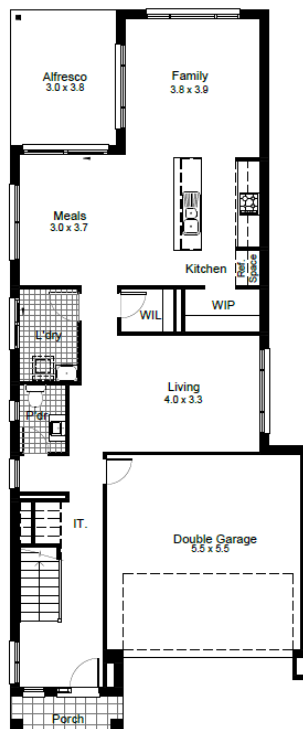
4 | 2.5 | 2

**Lot 139 \$1,153,000**

Clarendon Homes Essential Collection  
with Current Promotion Offer.

## PACKAGE INCLUDES

- Land Size - 280 SQM
- Blinds to the home
- Coloured Render to Trims of Façade
- Ducted Air
- 20mm Stone Benchtops to Kitchen
- 900W Smeg Appliances
- Floor Coverings throughout
- Remote Control for garage
- Soft close drawers to kitchen
- 2450mm Ceiling Heights
- Driveways, Landscaping and Fencing
- \$30,000 Discount Already Applied
- & Much More



This plan may include additional steps, please see a consultant.

**ClarendonHomes**



House Length	20m	Total Area m <sup>2</sup>	249
House Width	9m	Total Area Squares	27